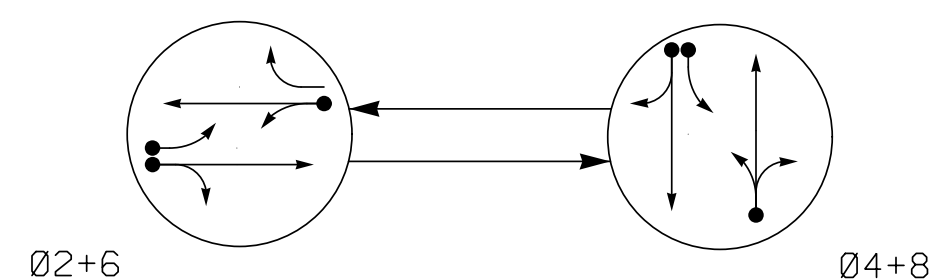


PHASING DIAGRAM



PHASING DIAGRAM DETECTION LEGEND

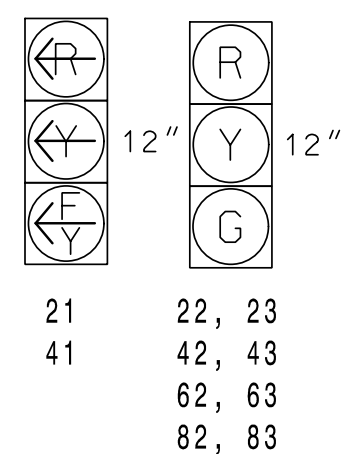
- DETECTED MOVEMENT
- UNDETECTED MOVEMENT (OVERLAP)
- UNSIGNALIZED MOVEMENT
- ↔ PEDESTRIAN MOVEMENT

TABLE OF OPERATION

SIGNAL FACE	PHASE	
	Ø2+6	Ø4+8
21	F	R
22, 23	G	R
41	R	F
42, 43	R	G
62, 63	G	R
82, 83	R	G

SIGNAL FACE I.D.

All Heads L.E.D.



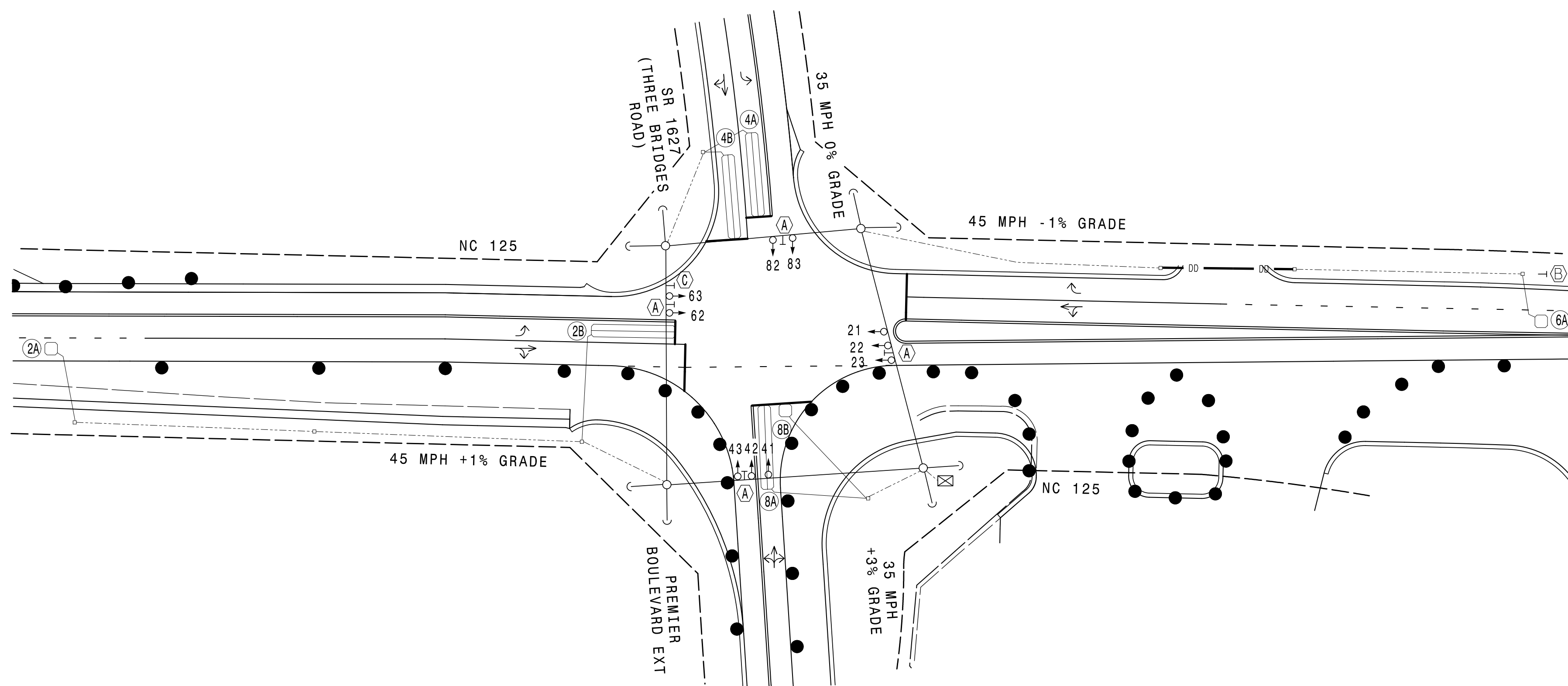
OASIS 2070 LOOP & DETECTOR INSTALLATION CHART

LOOP	SIZE (FT)	DISTANCE FROM STOPBAR (FT)	TURNS	DETECTOR PROGRAMMING								
				NEW LOOP	PHASE	CALLING	EXTENSION	FULL TIME DELAY	STRETCH TIME	DELAY TIME	SYSTEM LOOP	NEW CARD
2A	6X6	300	6	Y	2	Y	Y	-	-	-	-	Y
2B	6X40	0	2-4-2	Y	2	Y	Y	Y	-	-	3	-
4A	6X40	0	2-4-2	Y	4	Y	Y	-	-	3	-	Y
4B	6X40	0	2-4-2	Y	4	Y	Y	-	-	10	-	Y
6A	6X6	300	6	Y	6	Y	Y	-	-	-	-	Y
8A	6X40	0	2-4-2	Y	8	Y	Y	-	-	3	-	Y
8B	6X6	0	6	Y	8	Y	Y	-	-	10	-	Y

2 PHASE FULLY ACTUATED (NC 125 WIRELESS CLOSED LOOP SYSTEM)

NOTES

- Refer to "Roadway Standard Drawings NCDOT" dated January 2018 and "Standard Specifications for Roads and Structures" dated January 2018.
- Do not program signal for late night flashing operation unless otherwise directed by the Engineer.
- Set all detector units to presence mode.
- Locate new cabinet so as not to obstruct sight distance of vehicles turning right on red.
- Pavement markings are existing.
- Maximum times shown in timing chart are for free-run operation only. Coordinated signal system timing values shall supersede these values.
- Closed loop system data: Channel number 1220.

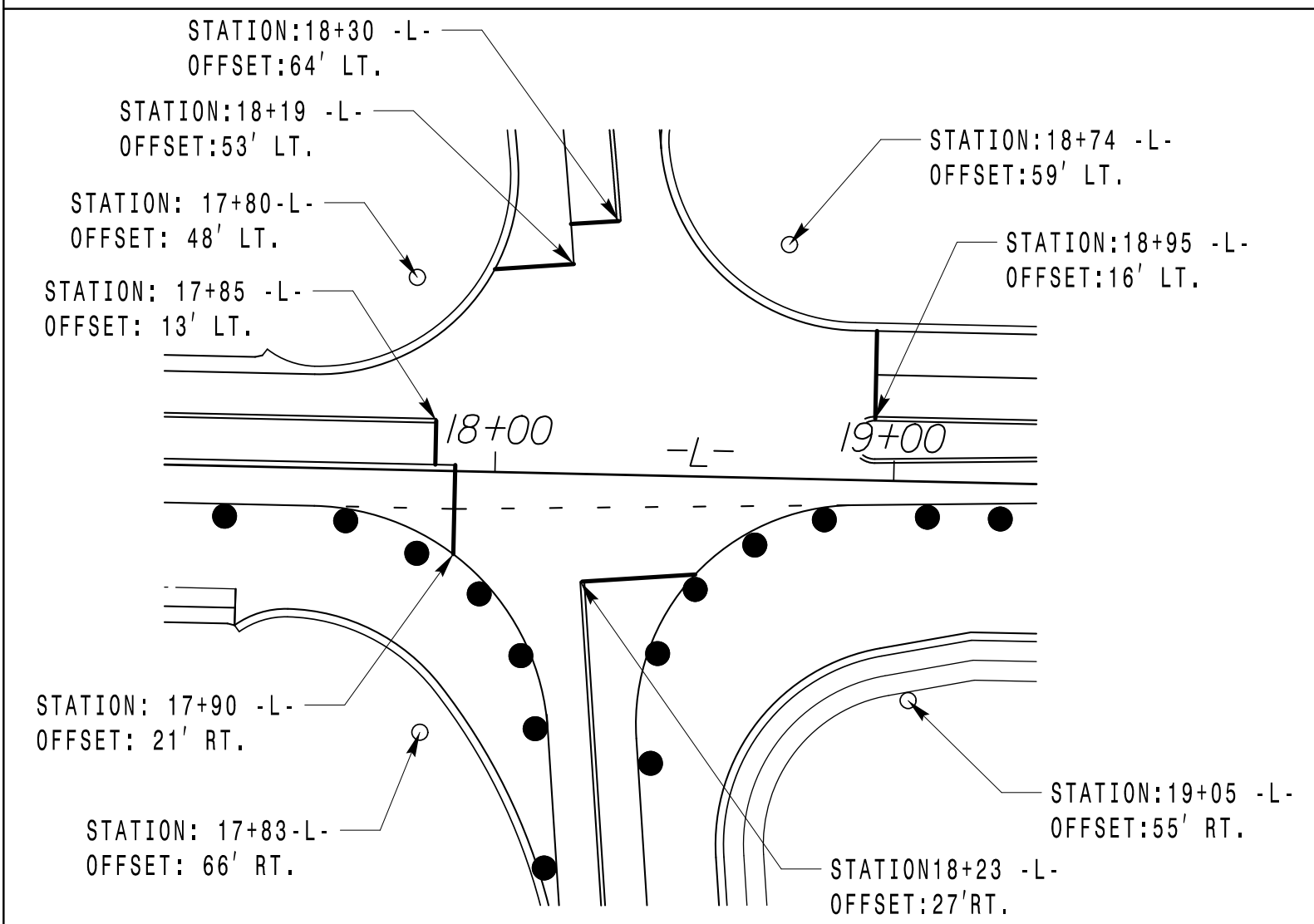


OASIS 2070 TIMING CHART

FEATURE	PHASE			
	2	4	6	8
Min Green 1 *	12	7	12	7
Extension 1 *	6.0	2.0	6.0	2.0
Max Green 1 *	90	20	90	20
Yellow Clearance	4.6	3.8	4.6	3.8
Red Clearance	1.5	1.5	1.5	1.5
Walk 1 *	-	-	-	-
Don't Walk 1	-	-	-	-
Seconds Per Actuation *	2.5	-	2.5	-
Max Variable Initial *	34	-	34	-
Time Before Reduction *	15	-	15	-
Time To Reduce *	45	-	45	-
Minimum Gap	3.0	-	3.0	-
Recall Mode	MIN RECALL	-	MIN RECALL	-
Vehicle Call Memory	YELLOW	-	YELLOW	-
Dual Entry	-	ON	-	ON
Simultaneous Gap	ON	ON	ON	ON

* These values may be field adjusted. Do not adjust Min Green and Extension times for phases 2 and 6 lower than what is shown. Min Green for all other phases should not be lower than 4 seconds.

STOPLINE AND POLE LOCATION DIAGRAM

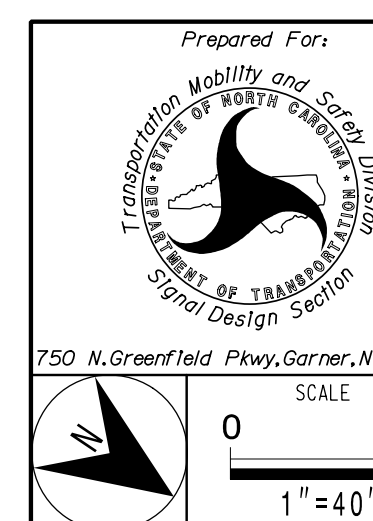


LEGEND

- | PROPOSED | EXISTING |
|----------|----------|
| | |
| | |
| | |
| | |
| | |
| | |
| | |
| | |
| | |
| | |
| | |
| | |
| | |
| | |
| | |
| | |

TEMPORARY DESIGN 1 - TC PLAN PHASE 2

PLANS PREPARED IN THE OFFICE OF:
KimleyHorn
NC License #F-0102
421 Fayetteville Street, Suite 600
Raleigh, NC 27601
(919) 677-2000



<p>NC 125 AT SR 1627 (THREE BRIDGES ROAD) / PREMIER BOULEVARD EXT.</p>	
DIVISION 4	HALIFAX COUNTY ROANOKE RAPIDS
PLAN DATE: APRIL 2018	REVIEWED BY: SL PHILLIPS
PREPARED BY: SP PENNINGTON	REVIEWED BY:
REVISIONS	INIT. DATE

DOCUMENT NOT CONSIDERED FINAL UNLESS ALL SIGNATURES COMPLETED

SEAL

NORTH CAROLINA PROFESSIONAL ENGINEER SEAL 032607

SL PHILLIPS
6/12/2018

SIG. INVENTORY NO. 04-122011