

FINAL
 EROSION CONTROL FOR
 CONSTRUCTION SHEET 19

AFTER PERMANENT STABILIZATION,
 FILL AND RESTORE BASIN AREAS TO
 PRECONSTRUCTION CONTOURS

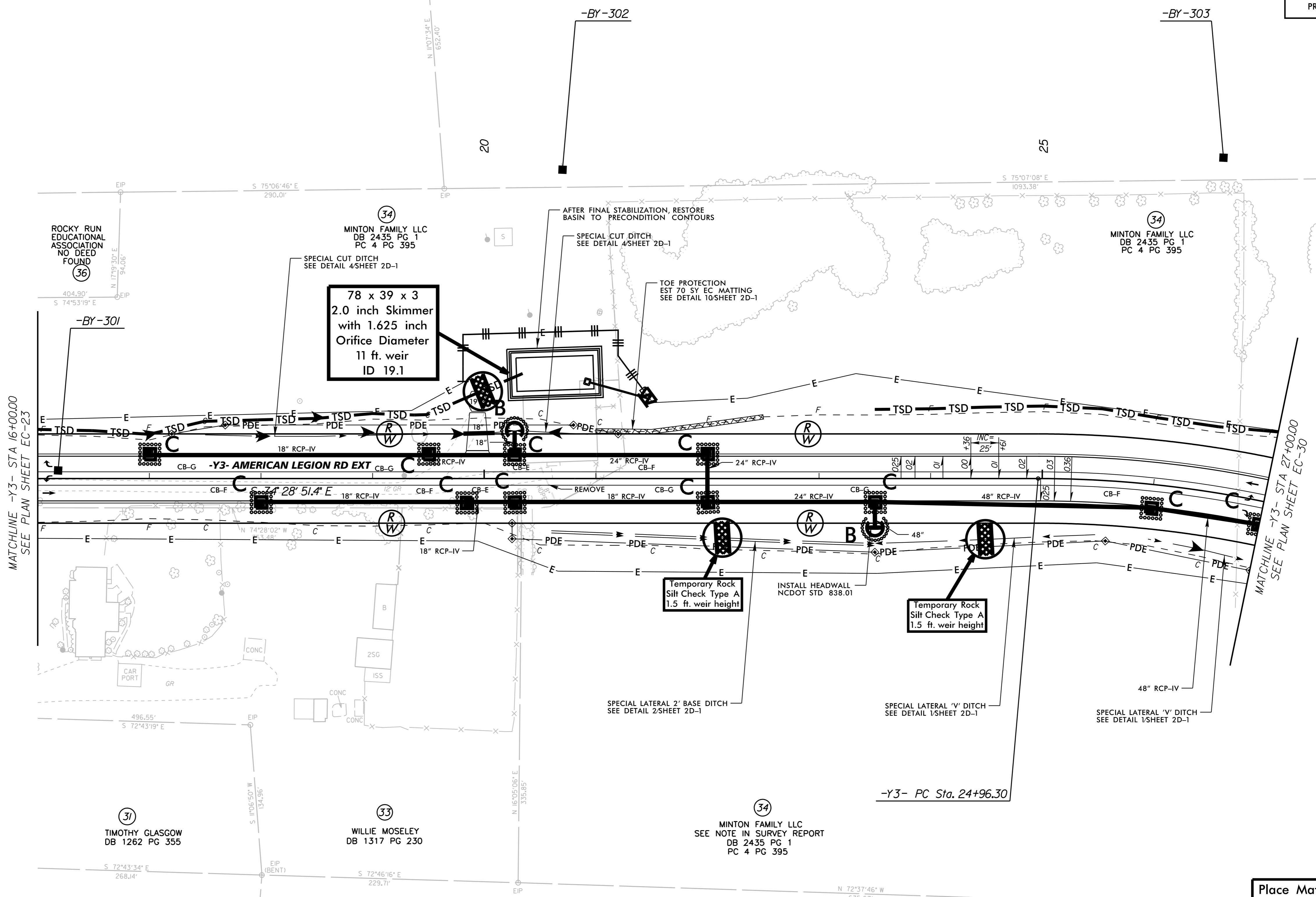
-Y3-
 PI Sta 26+58.52
 $\Delta = 18^{\circ} 25' 43.3''$ (RT)
 $D = 5^{\circ} 43' 46.5''$
 $L = 321.64'$
 $T = 162.22'$
 $R = 1,000.00'$
 $e = 3.6$
 $R_{wv} = 90'$

NOTE:
 USE 1.0 FT WEIR HEIGHT FOR TEMPORARY ROCK
 SILT CHECKS TYPE - A THAT ARE NOT LABELED.

(70)
 EDWARD L. DICKENS
 SEE NOTE IN SURVEY REPORT
 DB 1455 PG 116
 PB 19 PG 74

NAD 83 / NA 2011

REVISIONS



78 x 39 x 3
 2.0 inch Skimmer
 with 1.625 inch
 Orifice Diameter
 11 ft. weir
 ID 19.1

Temporary Rock
 Silt Check Type A
 1.5 ft. weir height

Temporary Rock
 Silt Check Type A
 1.5 ft. weir height

Place Matting for Erosion Control
 on Slope as Work Allows.
 See Sheets EC-3 thru EC-3B
 for Station Ranges

INSTALL MATTING FOR
 EROSION CONTROL IN THE
 PROPOSED DITCH LINE.
 SEE SHEETS EC-3A THRU
 EC-3B FOR STATION RANGES

SEE SHEET NO. 28 FOR -Y3- PROFILE

5/14/99

6/28/2018