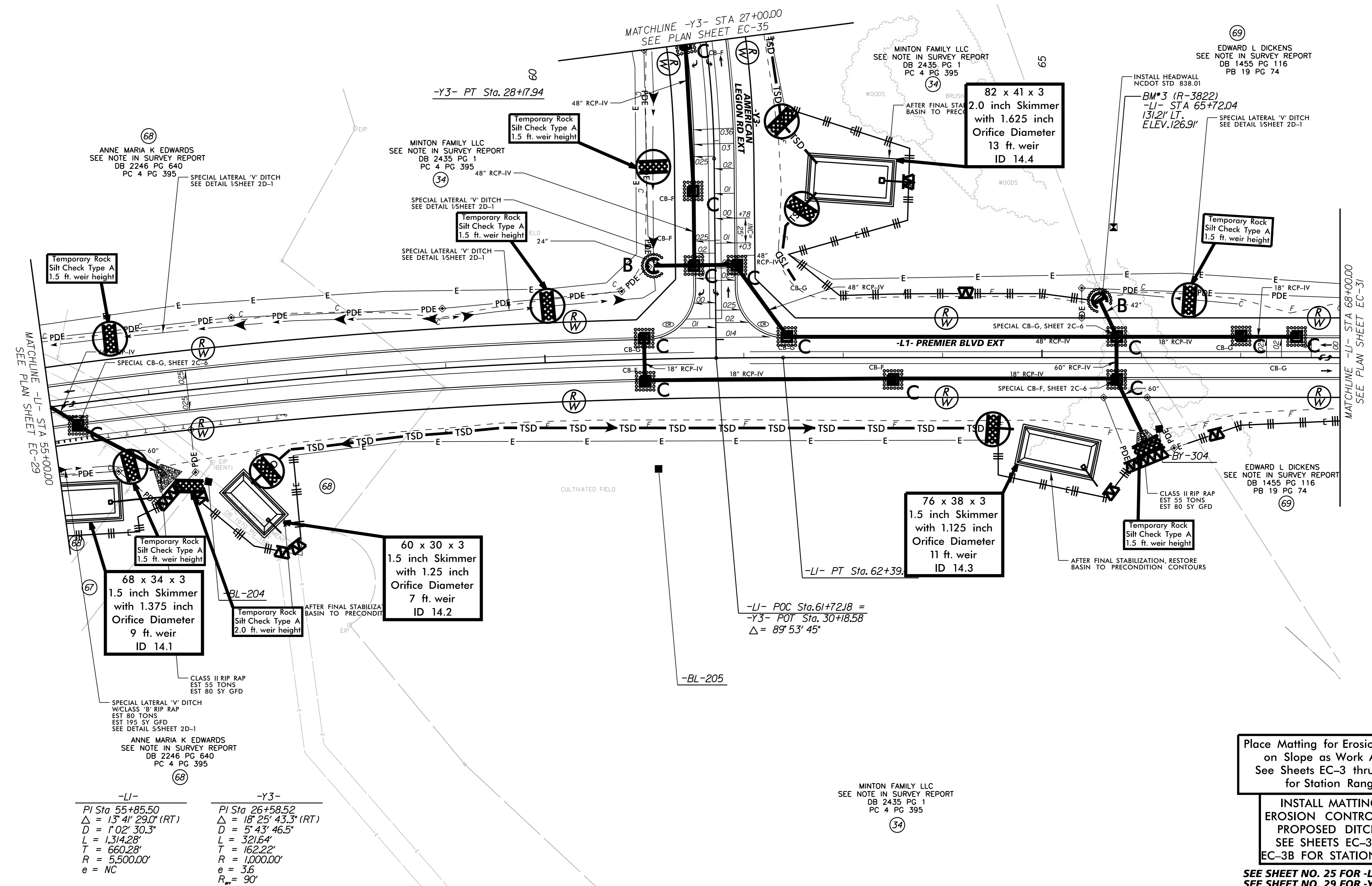
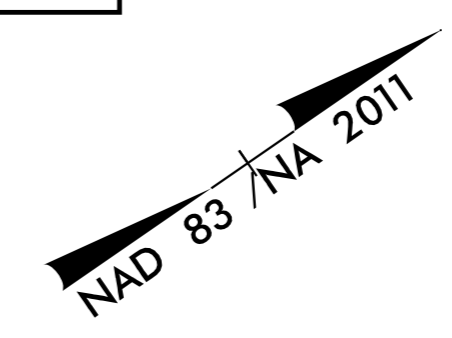


5/14/99

AFTER PERMANENT STABILIZATION,
FILL AND RESTORE BASIN AREAS TO
PRECONSTRUCTION CONTOURS

NOTE:
USE 1.0 FT WEIR HEIGHT FOR TEMPORARY ROCK
SILT CHECKS TYPE - A THAT ARE NOT LABELED.



REVISIONS

| -L1- | -Y3- |
|-------------------------------------|-------------------------------------|
| PI Sta 55+85.50 | PI Sta 26+58.52 |
| $\Delta = 13^\circ 41' 29.0''$ (RT) | $\Delta = 18^\circ 25' 43.3''$ (RT) |
| D = 1' 02' 30.3" | D = 5' 43' 46.5" |
| L = 1,314.28' | L = 321.64' |
| T = 660.28' | T = 162.22' |
| R = 5,500.00' | R = 1,000.00' |
| e = NC | e = 3.6 |
| | $R_w = 90'$ |

Place Matting for Erosion Control
on Slope as Work Allows.
See Sheets EC-3 thru EC-3B
for Station Ranges

INSTALL MATTING FOR
EROSION CONTROL IN THE
PROPOSED DITCH LINE.
SEE SHEETS EC-3A THRU
EC-3B FOR STATION RANGES

SEE SHEET NO. 25 FOR -L1- PROFILE
SEE SHEET NO. 29 FOR -Y3- PROFILE

6/28/2018