

Place Matting for Erosion Control on Slope as Work Allows. See Sheets EC-3 thru EC-3B for Station Ranges

Place Matting for Erosion Control on Slopes Adjacent to Permitted Wetlands as Work Allows.

INSTALL MATTING FOR EROSION CONTROL IN THE PROPOSED DITCH LINE. SEE SHEETS EC-3A THRU EC-3B FOR STATION RANGES

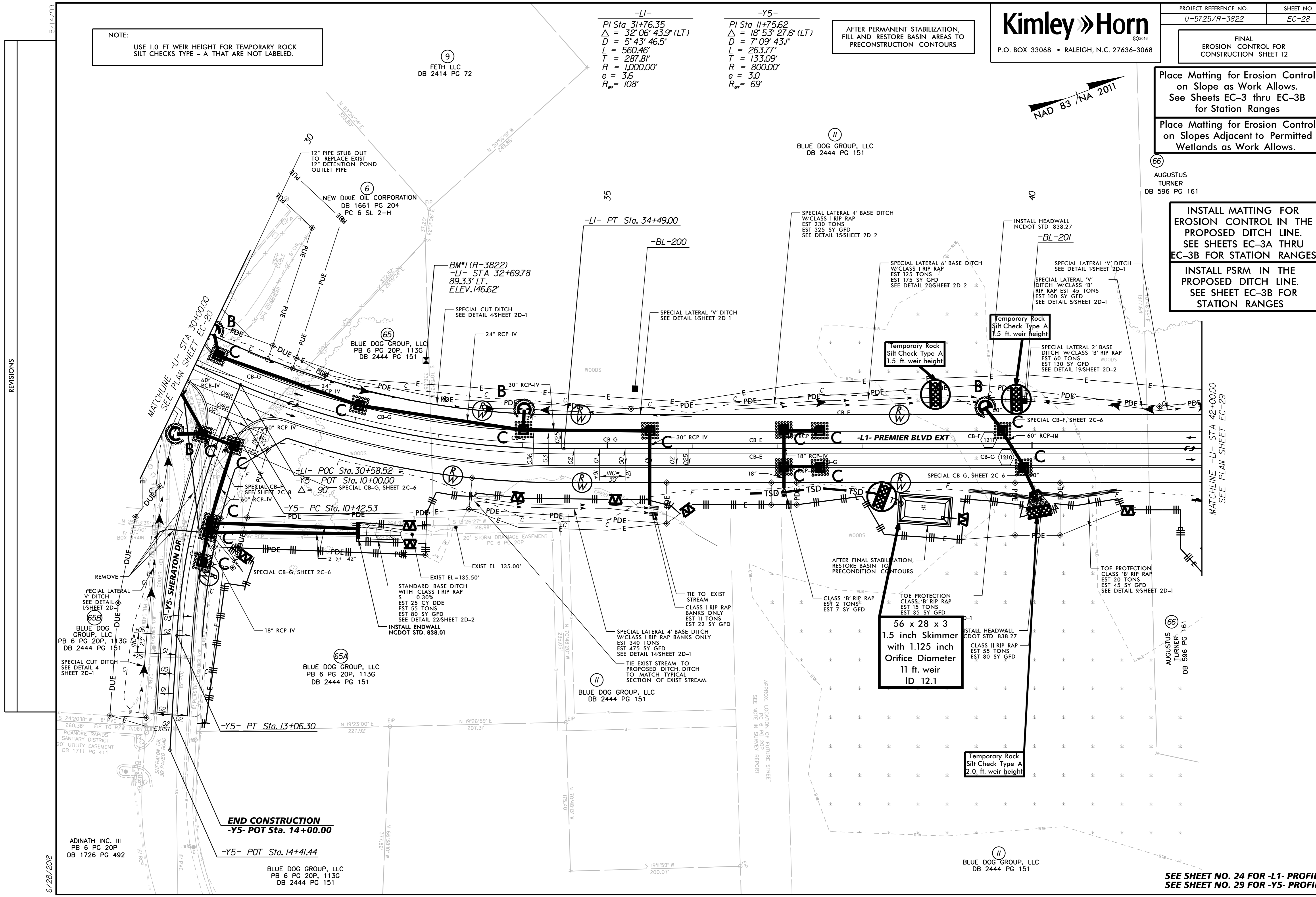
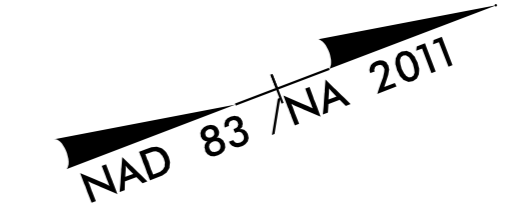
INSTALL PSRM IN THE PROPOSED DITCH LINE. SEE SHEET EC-3B FOR STATION RANGES

NOTE:  
USE 1.0 FT WEIR HEIGHT FOR TEMPORARY ROCK SILT CHECKS TYPE - A THAT ARE NOT LABELED.

**-LI-**  
PI Sta 31+76.35  
 $\Delta = 32^{\circ}06'43.9''$  (LT)  
D = 5'43'46.5"  
L = 560.46'  
T = 287.81'  
R = 1,000.00'  
e = 3.6  
R<sub>o</sub> = 108'

**-Y5-**  
PI Sta 11+75.62  
 $\Delta = 18^{\circ}53'27.6''$  (LT)  
D = 7'09'43.1"  
L = 263.77'  
T = 133.09'  
R = 800.00'  
e = 3.0  
R<sub>o</sub> = 69'

AFTER PERMANENT STABILIZATION, FILL AND RESTORE BASIN AREAS TO PRECONSTRUCTION CONTOURS



REVISIONS

5/14/1999

6/28/2018

ADINATH INC. III  
PB 6 PG 20P  
DB 1726 PG 492

BLUE DOG GROUP, LLC  
PB 6 PG 20P, 113G  
DB 2444 PG 151

BLUE DOG GROUP, LLC  
DB 2444 PG 151

BLUE DOG GROUP, LLC  
DB 2444 PG 151

AUGUSTUS TURNER  
DB 596 PG 161

56 x 28 x 3  
1.5 inch Skimmer  
with 1.125 inch  
Orifice Diameter  
11 ft. weir  
ID 12.1

Temporary Rock  
Silt Check Type A  
2.0 ft. weir height

SEE SHEET NO. 24 FOR -L1- PROFILE  
SEE SHEET NO. 29 FOR -Y5- PROFILE