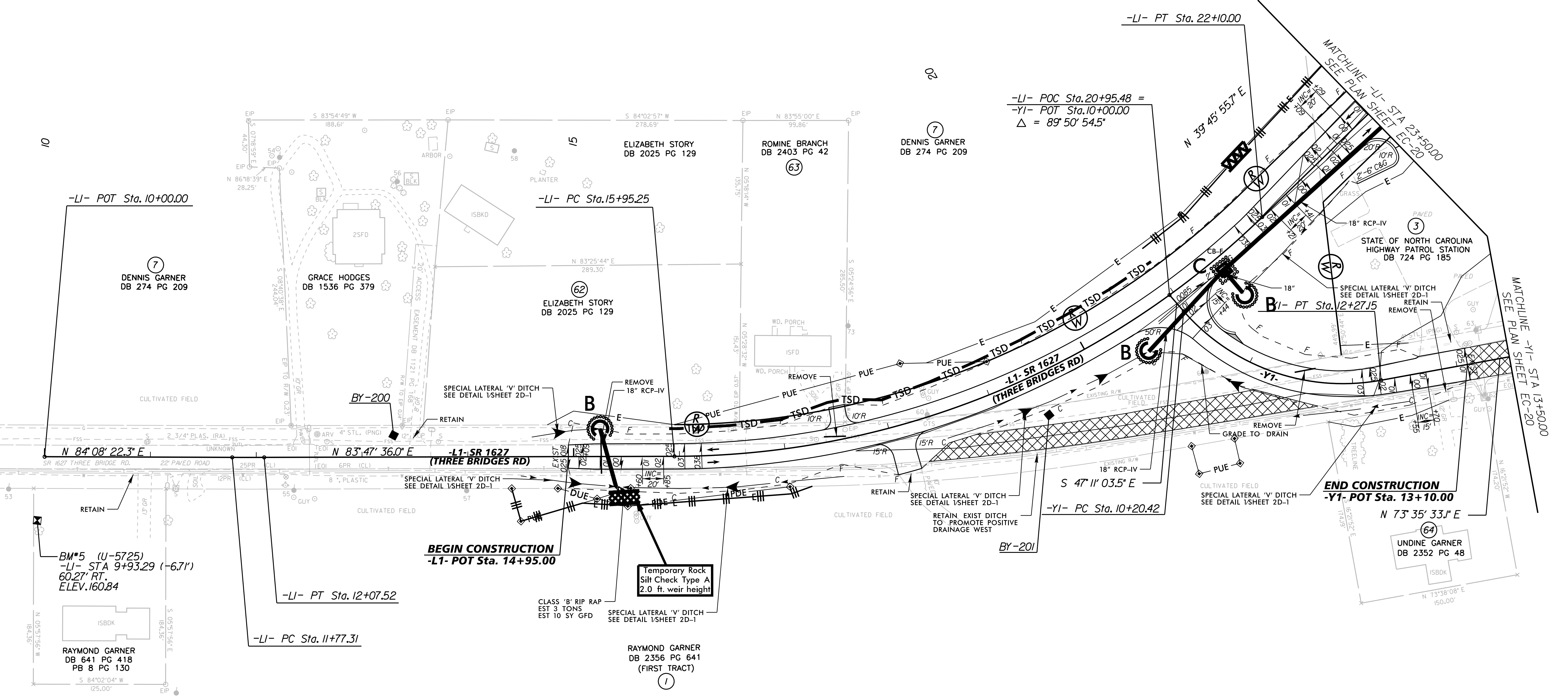


NOTE:
 USE 1.0 FT WEIR HEIGHT FOR TEMPORARY ROCK
 SILT CHECKS TYPE - A THAT ARE NOT LABELED.

-LI-		-YI-	
PI Sta 11+92.42	PI Sta 19+18.70	PI Sta 11+34.09	PI Sta 11+34.09
$\Delta = 0' 20' 46.2''$ (LT)	$\Delta = 44' 01' 40.4''$ (LT)	$\Delta = 59' 13' 23.4''$ (LT)	$\Delta = 59' 13' 23.4''$ (LT)
$D = 1' 08' 45.3''$	$D = 7' 09' 43.1''$	$D = 28' 38' 52.4''$	$D = 28' 38' 52.4''$
$L = 30.21'$	$L = 614.75'$	$L = 206.73'$	$L = 206.73'$
$T = 15.10'$	$T = 323.45'$	$T = 113.67'$	$T = 113.67'$
$R = 5,000.00'$	$R = 800.00'$	$R = 200.00'$	$R = 200.00'$
	$e = 3.8$	$e = 3.0$	$e = 3.0$
	$R_{we} = 76'$	$R_{we} = 15'$	$R_{we} = 15'$

NAD 83 / NA 2011

REVISIONS



BM#5 (U-5725)
 -LI- STA 9+93.29 (-6.71')
 60.27' RT.
 ELEV. 160.84

RAYMOND GARNER
 DB 641 PG 418
 PB 8 PG 130

Temporary Rock
 Silt Check Type A
 2.0 ft. weir height

RAYMOND GARNER
 DB 2356 PG 641
 (FIRST TRACT)

Place Matting for Erosion Control
 on Slope as Work Allows.
 See Sheets EC-3 thru EC-3B
 for Station Ranges

INSTALL MATTING FOR
 EROSION CONTROL IN THE
 PROPOSED DITCH LINE.
 SEE SHEETS EC-3A THRU
 EC-3B FOR STATION RANGES

SEE SHEET NO. 23 FOR -L1- PROFILE
 SEE SHEET NO. 27 FOR -Y1- PROFILE

5/14/99

6/28/2018