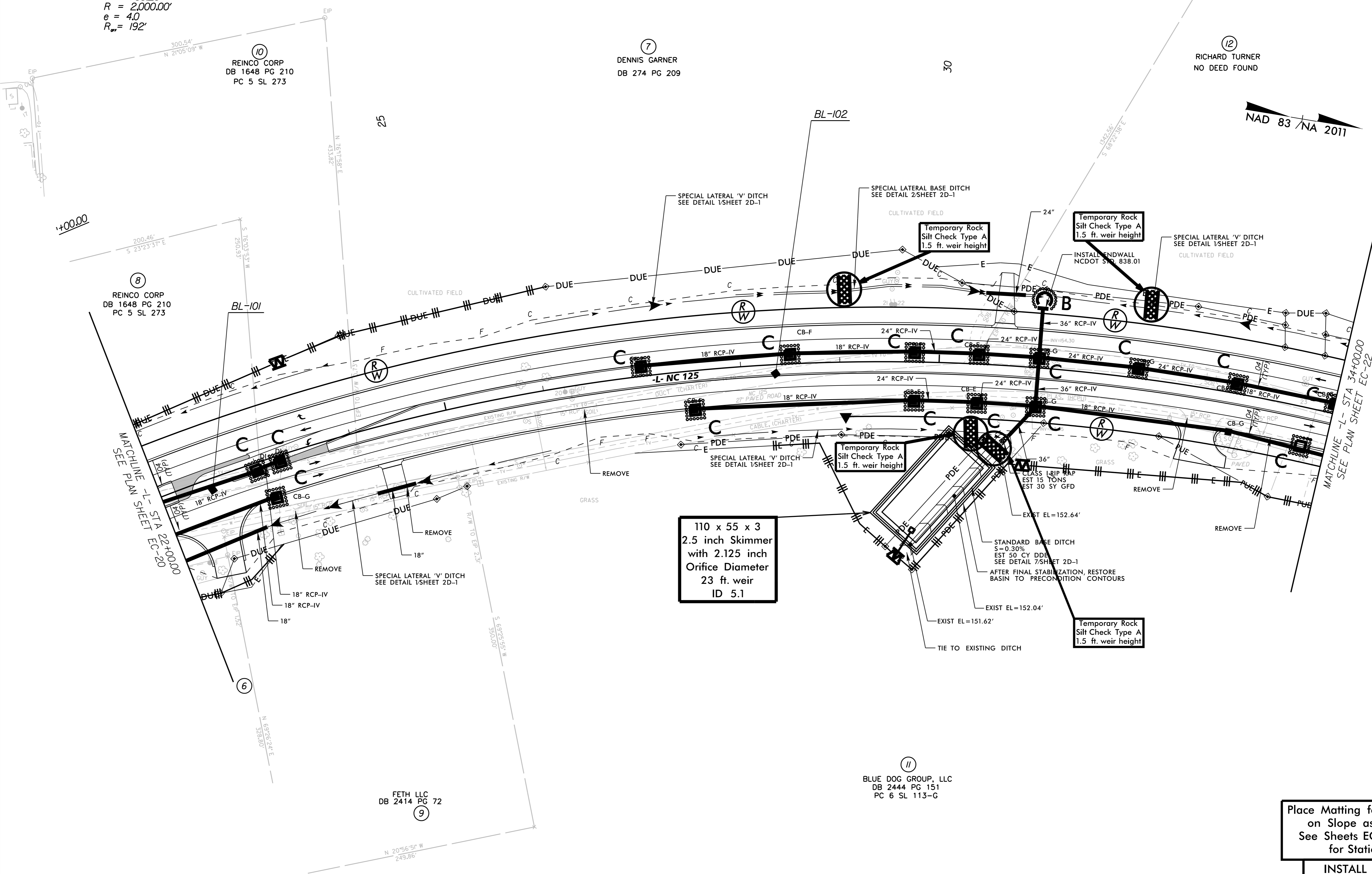
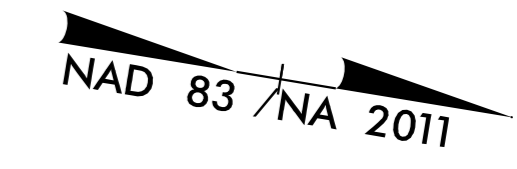


-L-
 PI Sta 29+77.86
 $\Delta = 41' 55" 36.6" (RT)$
 $D = 2' 51" 53.2"$
 $L = 1,463.52'$
 $T = 766.26'$
 $R = 2,000.00'$
 $e = 4.0$
 $R_w = 192'$

AFTER PERMANENT STABILIZATION,
 FILL AND RESTORE BASIN AREAS TO
 PRECONSTRUCTION CONTOURS



MATCHLINE -L- STA 22+00.00
 SEE PLAN SHEET EC-20

MATCHLINE -L- STA 34+00.00
 SEE PLAN SHEET EC-22

**110 x 55 x 3
 2.5 inch Skimmer
 with 2.125 inch
 Orifice Diameter
 23 ft. weir
 ID 5.1**

Place Matting for Erosion Control
 on Slope as Work Allows.
 See Sheets EC-3 thru EC-3B
 for Station Ranges

INSTALL MATTING FOR
 EROSION CONTROL IN THE
 PROPOSED DITCH LINE.
 SEE SHEETS EC-3A THRU
 EC-3B FOR STATION RANGES

SEE SHEET NO. 20 FOR -L- PROFILE

REVISIONS

5/14/99

6/28/2018