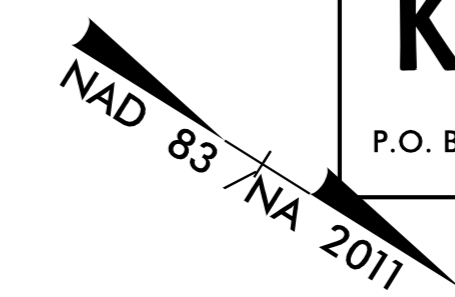


-L-
 PI Sta 12+33.09 Δ = 5° 05' 23.8" (RT)
 D = 2° 07' 19.4"
 L = 239.86'
 T = 120.01'
 R = 2,700.00'
 e = 4.0
 R_{eq} = 192'

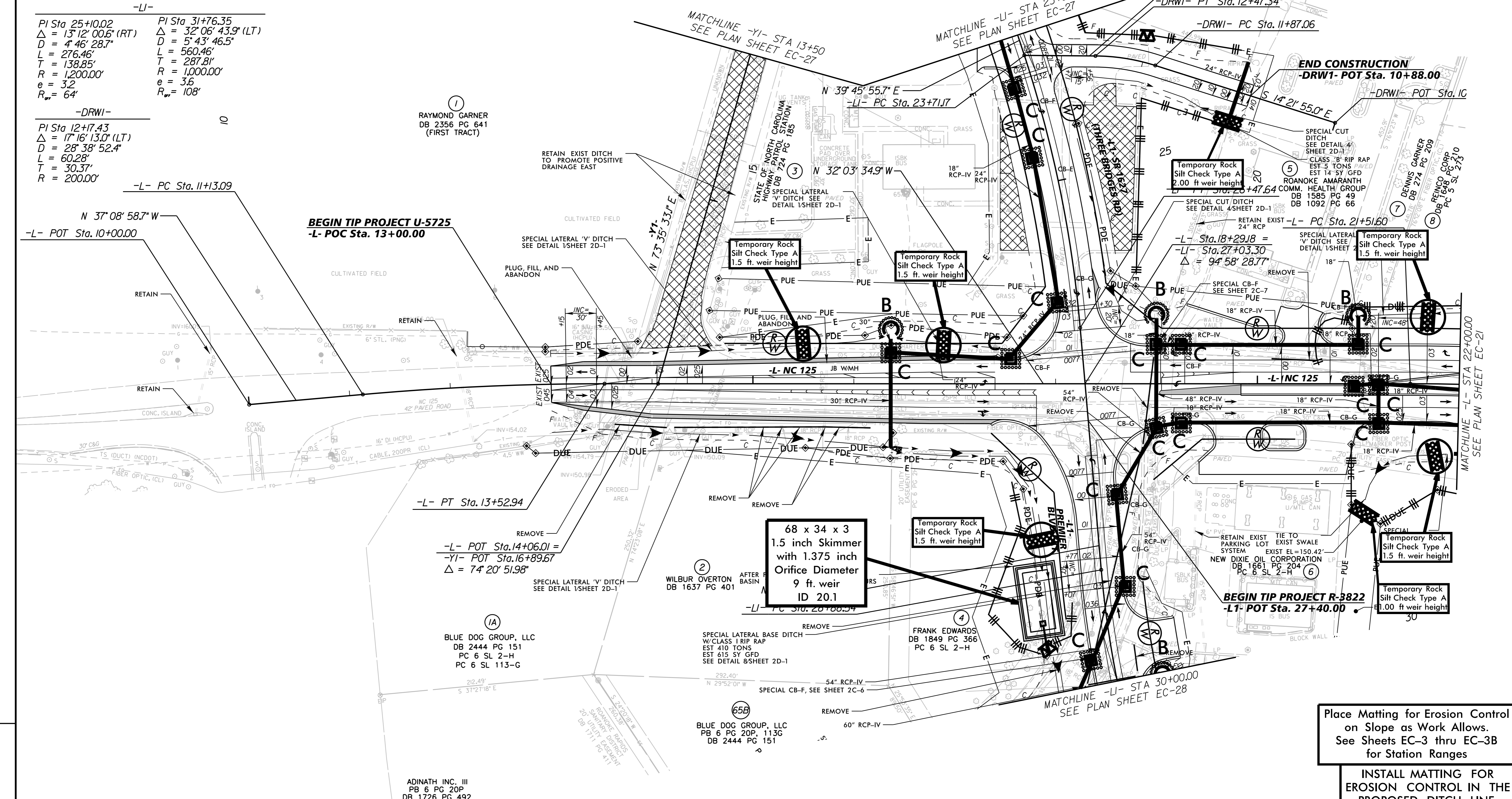
-L1-
 PI Sta 25+10.02 Δ = 13° 12' 00.6" (RT)
 D = 4° 46' 28.7"
 L = 276.46'
 T = 138.85'
 R = 1,200.00'
 e = 3.2
 R_{eq} = 64'

-DRWI-
 PI Sta 12+17.43 Δ = 17° 16' 13.0" (LT)
 D = 28° 38' 52.4"
 L = 60.28'
 T = 30.37'
 R = 200.00'

AFTER PERMANENT STABILIZATION,
 FILL AND RESTORE BASIN AREAS TO
 PRECONSTRUCTION CONTOURS



REVISIONS



Place Matting for Erosion Control on Slope as Work Allows. See Sheets EC-3 thru EC-3B for Station Ranges

INSTALL MATTING FOR EROSION CONTROL IN THE PROPOSED DITCH LINE. SEE SHEETS EC-3A THRU EC-3B FOR STATION RANGES

INSTALL PSRM IN THE PROPOSED DITCH LINE. SEE SHEET EC-3B FOR STATION RANGES

SEE SHEET NO. 20 FOR -L- PROFILE
 SEE SHEET NO. 24 FOR -L1- PROFILE
 SEE SHEET NO. 27 FOR -Y1- PROFILE

6/28/2018