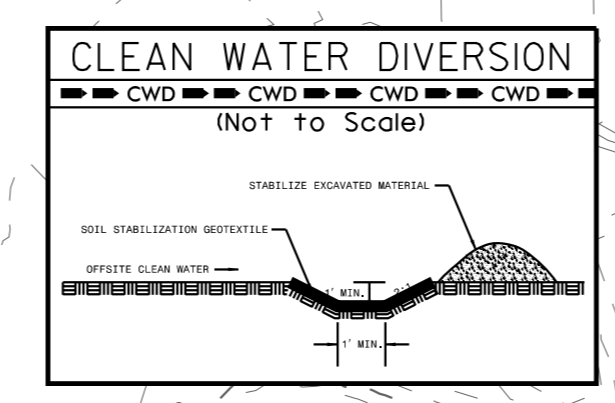


5/14/99

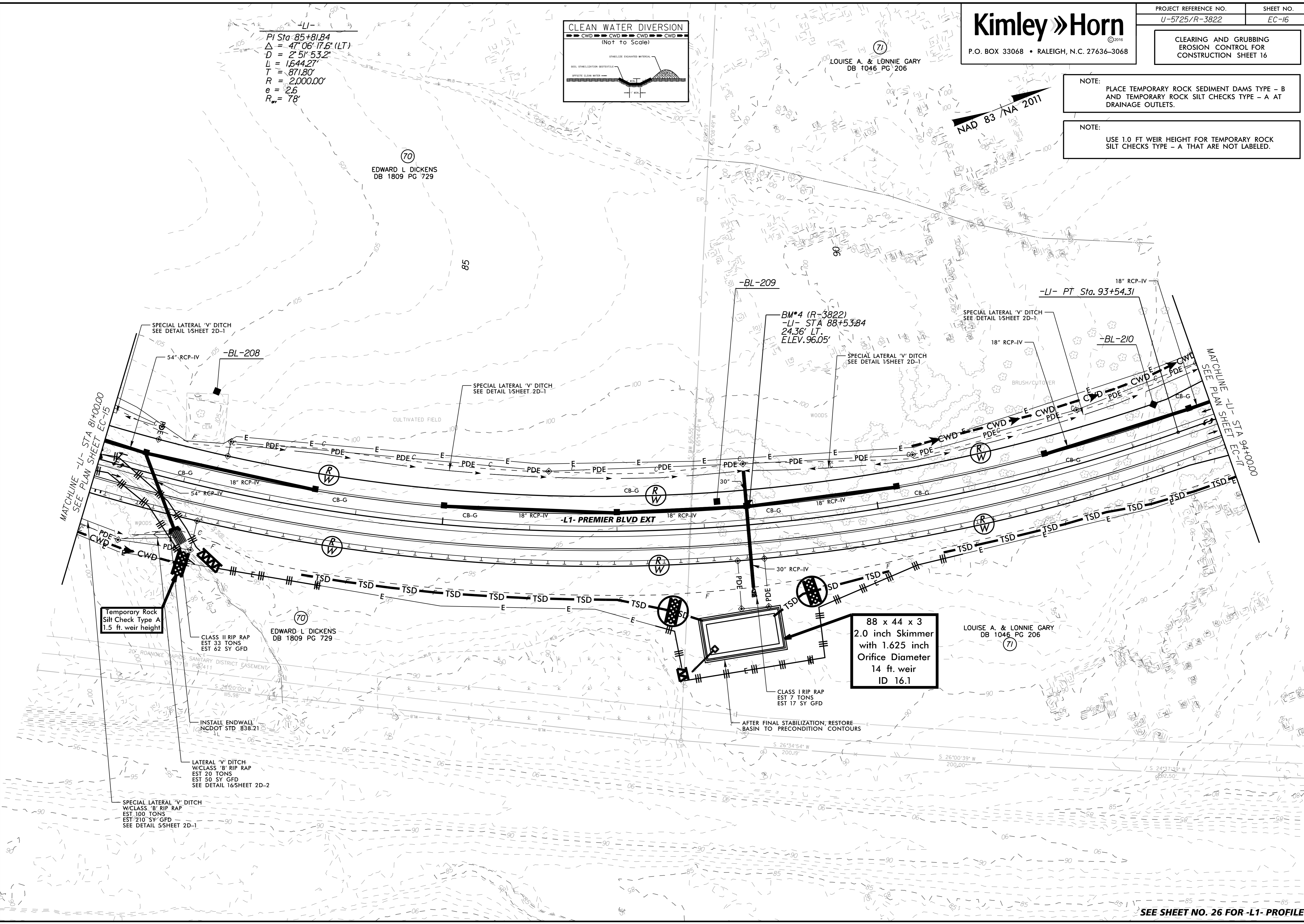


PI Sta 85+81.84
 $\Delta = 47^{\circ}06'17.6" (LT)$
 $D = 2^{\circ}51'53.2"$
 $L = 1644.27'$
 $T = 871.80'$
 $R = 2,000.00'$
 $e = 2.6'$
 $R_{\text{cur}} = 78'$

NOTE:
 PLACE TEMPORARY ROCK SEDIMENT DAMS TYPE - B
 AND TEMPORARY ROCK SILT CHECKS TYPE - A AT
 DRAINAGE OUTLETS.

NOTE:
 USE 1.0 FT WEIR HEIGHT FOR TEMPORARY ROCK
 SILT CHECKS TYPE - A THAT ARE NOT LABELED.

REVISIONS



Temporary Rock
 Silt Check Type A
 1.5 ft weir height

88 x 44 x 3
 2.0 inch Skimmer
 with 1.625 inch
 Orifice Diameter
 14 ft weir
 ID 16.1

6/28/2018

SEE SHEET NO. 26 FOR -L1- PROFILE