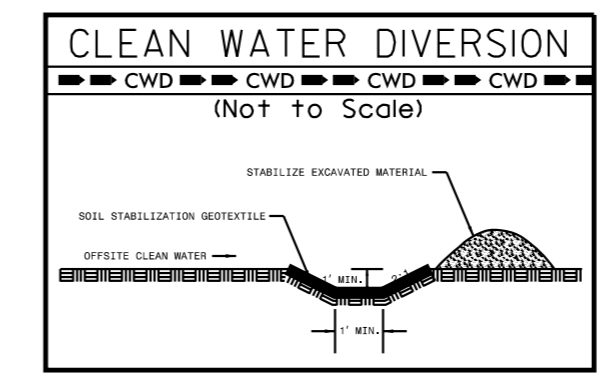


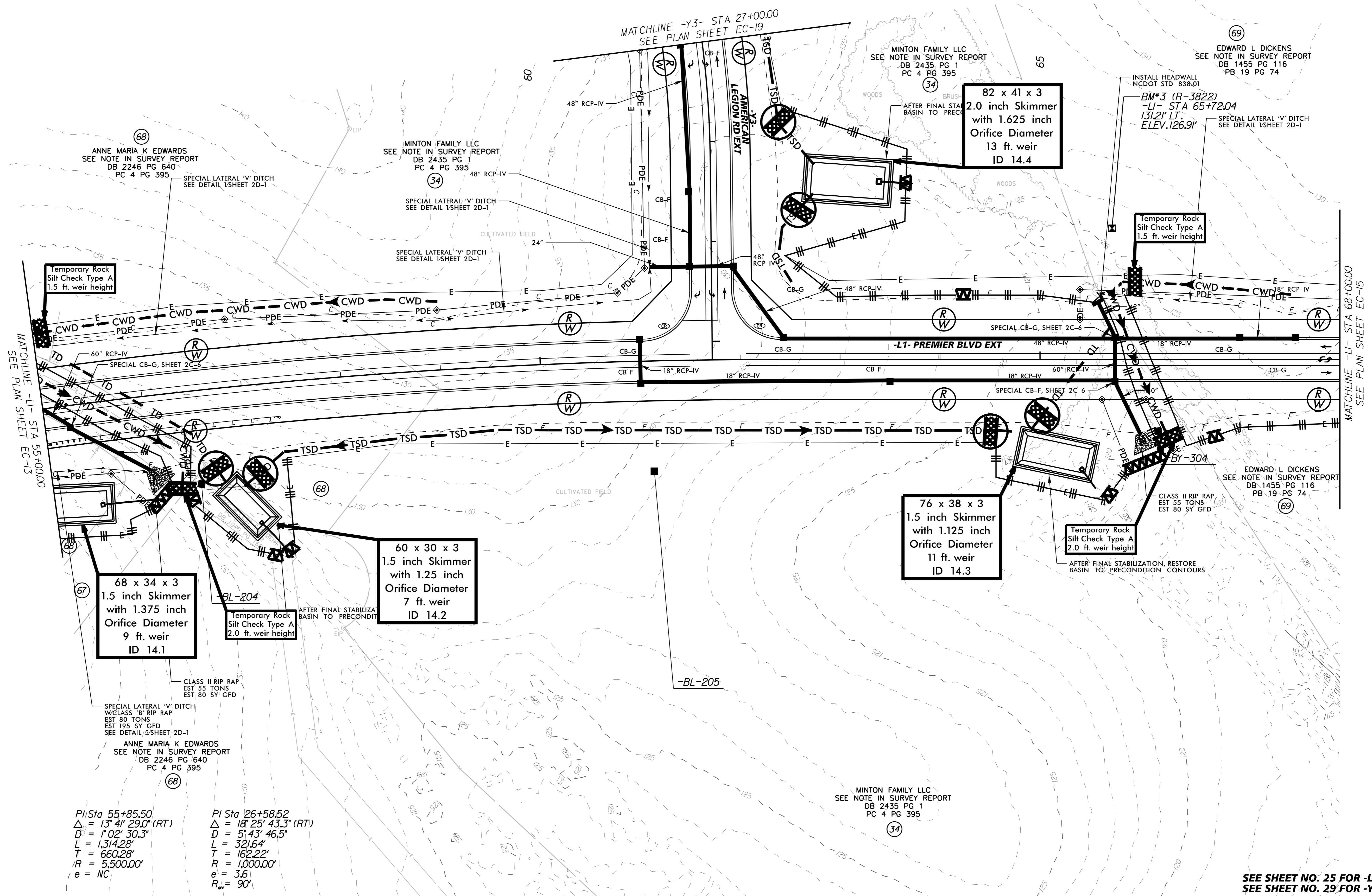
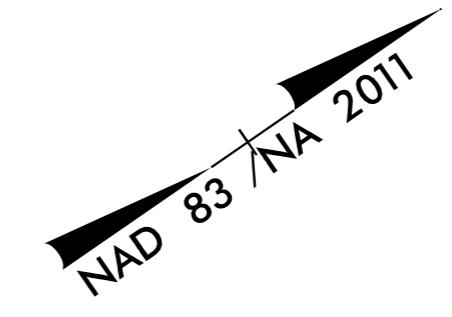
5/14/99

INSTALL PIPE(S) IN JURISDICTIONAL AREAS WITHOUT IMPACTING STREAM UNTIL AREA STABILIZED AND ACCORDING TO NCDOT BEST MANAGEMENT PRACTICES FOR CONSTRUCTION AND MAINTENANCE ACTIVITIES MANUAL.



NOTE:
 USE 1.0 FT WEIR HEIGHT FOR TEMPORARY ROCK SILT CHECKS TYPE - A THAT ARE NOT LABELED.

NOTE:
 PLACE TEMPORARY ROCK SEDIMENT DAMS TYPE - B AND TEMPORARY ROCK SILT CHECKS TYPE - A AT DRAINAGE OUTLETS.



Temporary Rock Silt Check Type A
 1.5 ft. weir height

82 x 41 x 3
 2.0 inch Skimmer
 with 1.625 inch
 Orifice Diameter
 13 ft. weir
 ID 14.4

Temporary Rock Silt Check Type A
 1.5 ft. weir height

76 x 38 x 3
 1.5 inch Skimmer
 with 1.125 inch
 Orifice Diameter
 11 ft. weir
 ID 14.3

68 x 34 x 3
 1.5 inch Skimmer
 with 1.375 inch
 Orifice Diameter
 9 ft. weir
 ID 14.1

60 x 30 x 3
 1.5 inch Skimmer
 with 1.25 inch
 Orifice Diameter
 7 ft. weir
 ID 14.2

Temporary Rock Silt Check Type A
 2.0 ft. weir height

PI Sta 55+85.50
 $\Delta = 13' 41'' 29.0''$ (RT)
 $D = 1' 02' 30.3''$
 $L = 1,314.28'$
 $T = 660.28'$
 $R = 5,500.00'$
 $e = NC$

PI Sta 26+58.52
 $\Delta = 18' 25' 43.3''$ (RT)
 $D = 51.43' 46.5''$
 $L = 321.64'$
 $T = 162.22'$
 $R = 1,000.00'$
 $e = 3.6'$
 $R_s = 90'$

REVISIONS

6/28/2018

SEE SHEET NO. 25 FOR -L1- PROFILE
 SEE SHEET NO. 29 FOR -Y3- PROFILE