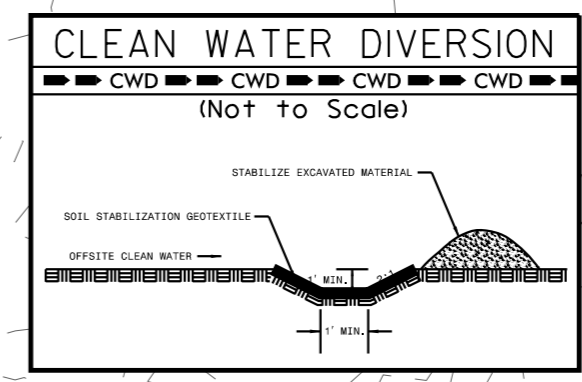


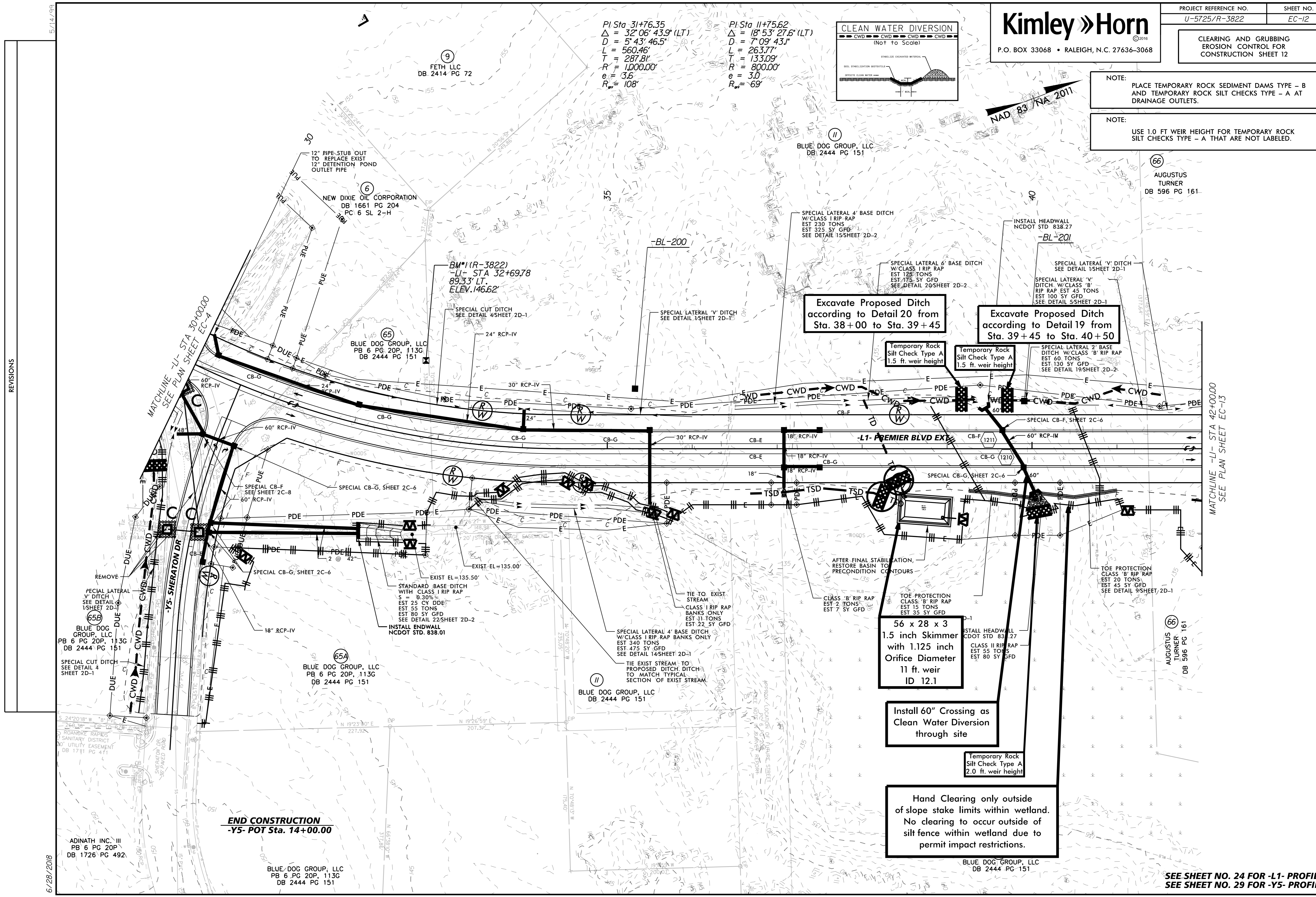
NOTE: PLACE TEMPORARY ROCK SEDIMENT DAMS TYPE - B AND TEMPORARY ROCK SILT CHECKS TYPE - A AT DRAINAGE OUTLETS.

NOTE: USE 1.0 FT WEIR HEIGHT FOR TEMPORARY ROCK SILT CHECKS TYPE - A THAT ARE NOT LABELED.



PI Sta 31+76.35
 $\Delta = 32'06'' 43.9''$ (LT)
 $D = 5'43'46.5''$
 $L = 560.46'$
 $T = 287.81'$
 $R = 1,000.00'$
 $e = 3.6$
 $R_{\text{ext}} = 108'$

PI Sta 11+75.62
 $\Delta = 18'53'27.6''$ (LT)
 $D = 7'09'43.1''$
 $L = 263.77'$
 $T = 133.09'$
 $R = 800.00'$
 $e = 3.0$
 $R_{\text{ext}} = 69'$



Excavate Proposed Ditch according to Detail 20 from Sta. 38+00 to Sta. 39+45

Excavate Proposed Ditch according to Detail 19 from Sta. 39+45 to Sta. 40+50

Temporary Rock Silt Check Type A 1.5 ft. weir height

Temporary Rock Silt Check Type A 1.5 ft. weir height

56 x 28 x 3 1.5 inch Skimmer with 1.125 inch Orifice Diameter 11 ft. weir ID 12.1

Install 60" Crossing as Clean Water Diversion through site

Temporary Rock Silt Check Type A 2.0 ft. weir height

Hand Clearing only outside of slope stake limits within wetland. No clearing to occur outside of silt fence within wetland due to permit impact restrictions.

END CONSTRUCTION
 -Y5- POT Sta. 14+00.00

5/14/99

REVISIONS

6/28/2018

SEE SHEET NO. 24 FOR -L1- PROFILE
 SEE SHEET NO. 29 FOR -Y5- PROFILE