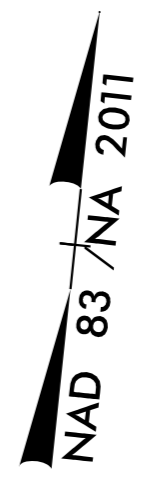


<p>PI Sta 11+92.42  <math>\Delta = 0' 20' 46.2''</math> (LT)  <math>D = 1' 08' 45.3''</math>  <math>L = 30.21'</math>  <math>T = 15.10'</math>  <math>R = 5,000.00'</math></p>	<p>PI Sta 19+18.70  <math>\Delta = 44' 01' 40.4''</math> (LT)  <math>D = 7' 09' 43.1''</math>  <math>L = 614.75'</math>  <math>T = 323.45'</math>  <math>R = 800.00'</math>  <math>e = 3.8</math>  <math>R_{\text{min}} = 76'</math></p>	<p>PI Sta 11+34.09  <math>\Delta = 59' 13' 23.4''</math> (LT)  <math>D = 28' 38' 52.4''</math>  <math>L = 206.73'</math>  <math>T = 113.67'</math>  <math>R = 200.00'</math>  <math>e = 3.0</math>  <math>R_{\text{min}} = 15'</math></p>
--	--	---

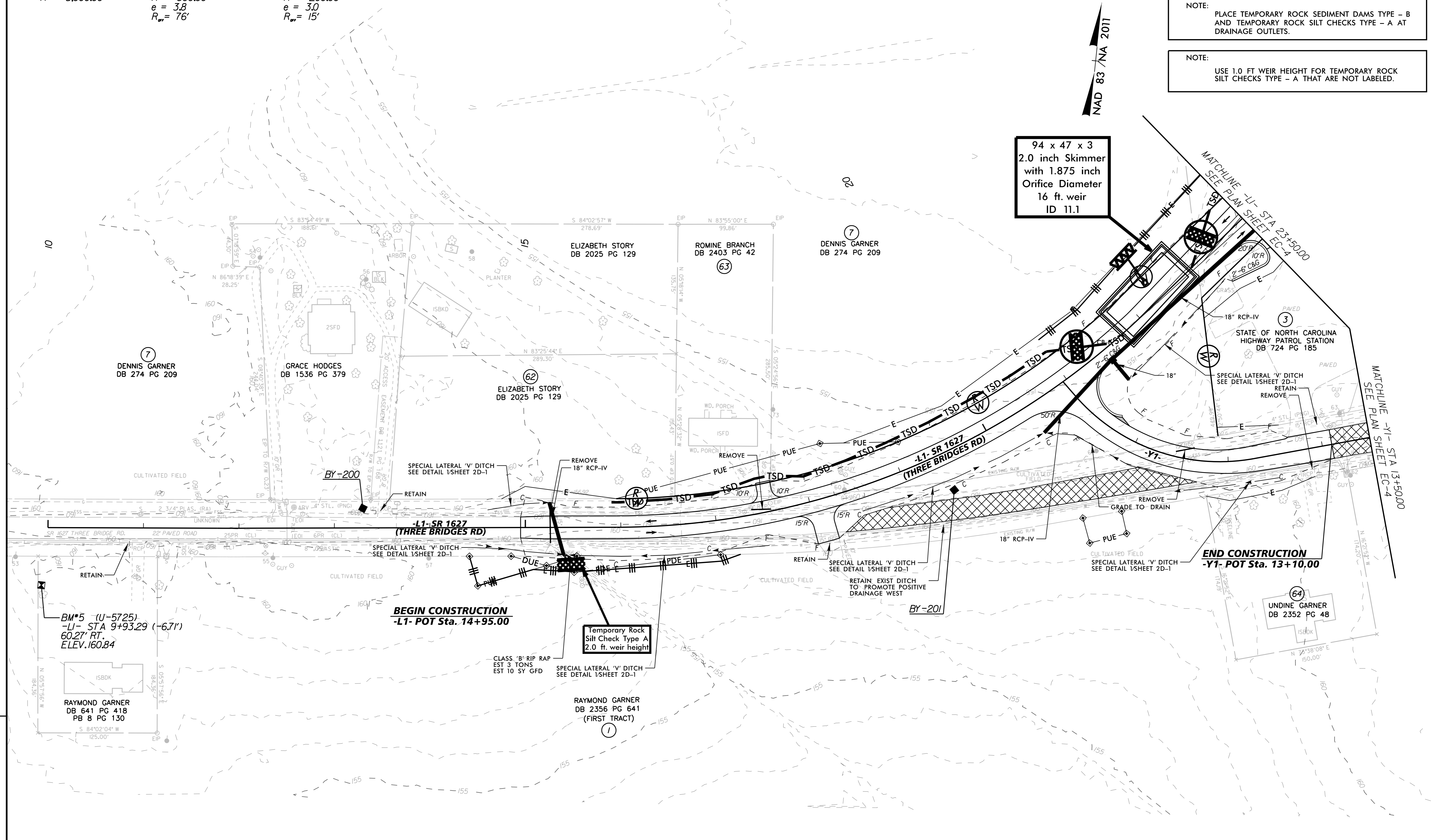
NOTE:  
 PLACE TEMPORARY ROCK SEDIMENT DAMS TYPE - B AND TEMPORARY ROCK SILT CHECKS TYPE - A AT DRAINAGE OUTLETS.

NOTE:  
 USE 1.0 FT WEIR HEIGHT FOR TEMPORARY ROCK SILT CHECKS TYPE - A THAT ARE NOT LABELED.



94 x 47 x 3  
 2.0 inch Skimmer  
 with 1.875 inch  
 Orifice Diameter  
 16 ft. weir  
 ID 11.1

REVISIONS



6/28/2018

SEE SHEET NO. 23 FOR -L1- PROFILE  
 SEE SHEET NO. 27 FOR -Y1- PROFILE