

5/14/99

PROJECT REFERENCE NO. R-3822/U-5725	SHEET NO. EC-10B
ROADWAY DESIGN ENGINEER	HYDRAULICS ENGINEER

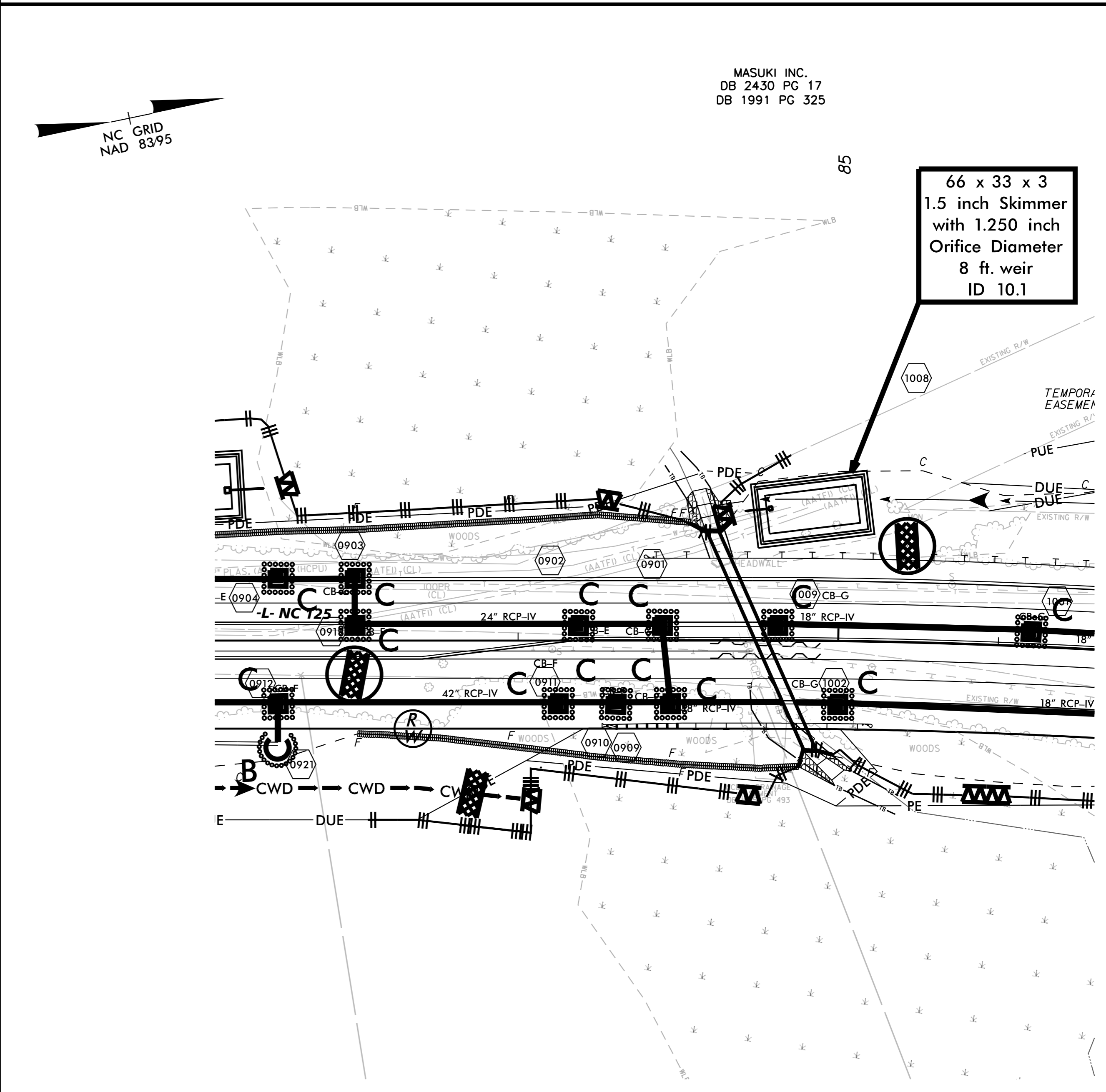
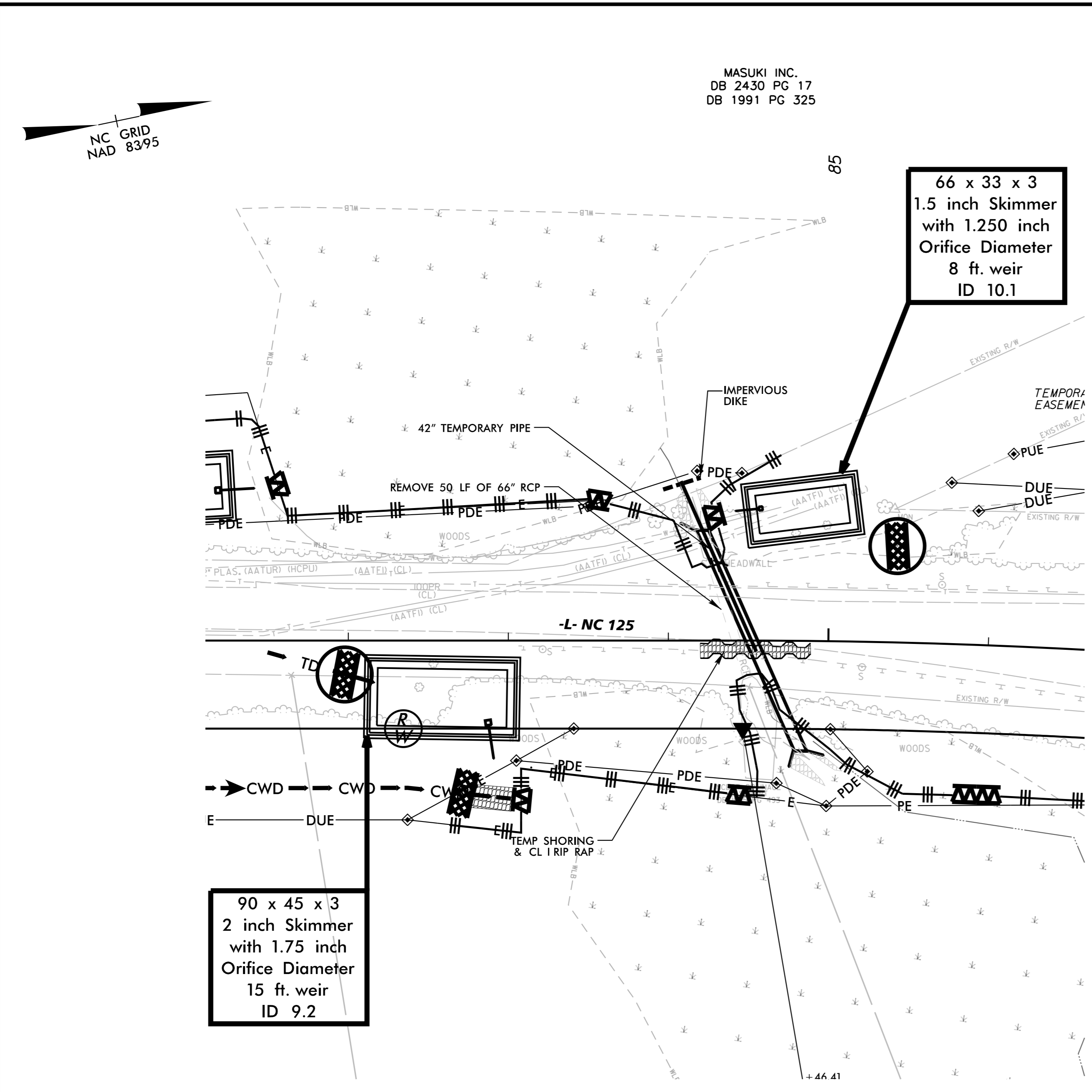
# CULVERT CONSTRUCTION SEQUENCE STA. 84+50 -L-

## PHASE 2A

- 1.) UTILIZE SPECIAL STILLING BASINS DURING CONSTRUCTION AS NEEDED.
- 2.) INSTALL IMPERVIOUS DIKE AND REMOVE EXIST 66" RCP. DURING REMOVAL, USE PUMP SYSTEM TO DIRECT WATER TO PORTION OF CULVERT CONSTRUCTED DURING PHASE I.
- 3.) INSTALL FLOOR OF RCBC.
- 4.) INSTALL 42" FLEXIBLE SMOOTH WALL PIPE ON FLOOR OF RCBC.

## PHASE 2B

- 1.) COMPLETE CONSTRUCTION OF RCBC AND ROADWAY FILL.
- 2.) REMOVE TEMPORARY SHORING.
- 3.) REMOVE IMPERVIOUS DIKES, TEMP 42" PIPE, AND DIRECT FLOW INTO RCBC.
- 4.) REMOVE SPECIAL STILLING BASIN AND STABILIZE AREAS AS NECESSARY.
- 5.) COMPLETE ROADWAY



6/28/2018