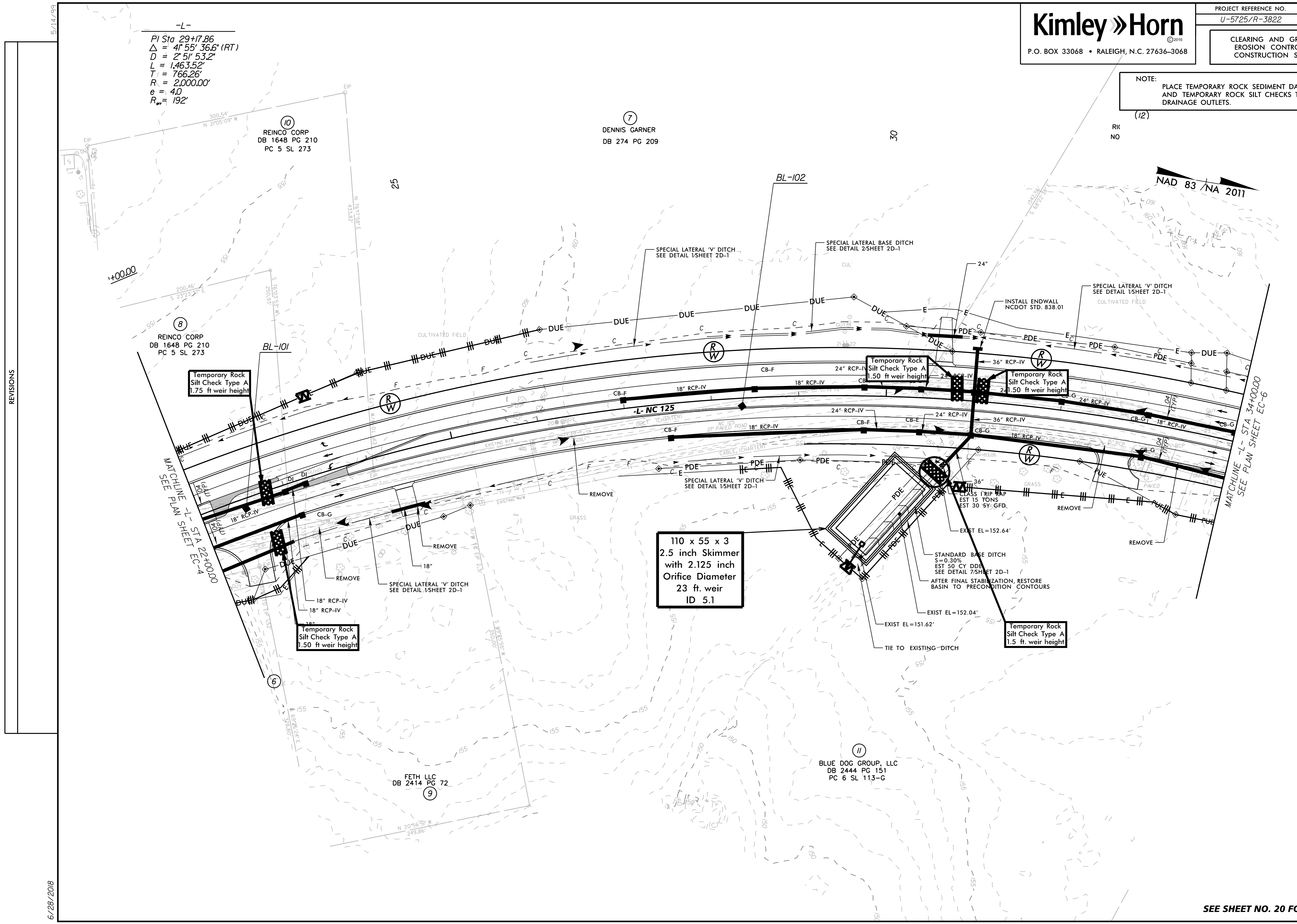


-L-
 PI Sta 29+77.86
 $\Delta = 41' 55" 36.6" (RT)$
 $D = 2' 51" 53.2"$
 $L = 1,463.52'$
 $T = 766.26'$
 $R = 2,000.00'$
 $e = 4.0'$
 $R_w = 192'$

NOTE:
 PLACE TEMPORARY ROCK SEDIMENT DAMS TYPE - B
 AND TEMPORARY ROCK SILT CHECKS TYPE - A AT
 DRAINAGE OUTLETS.



REVISIONS

6/28/2018

SEE SHEET NO. 20 FOR -L- PROFILE