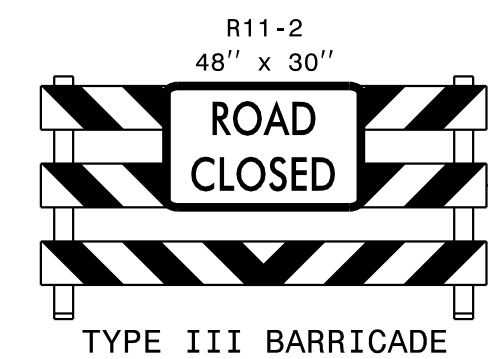
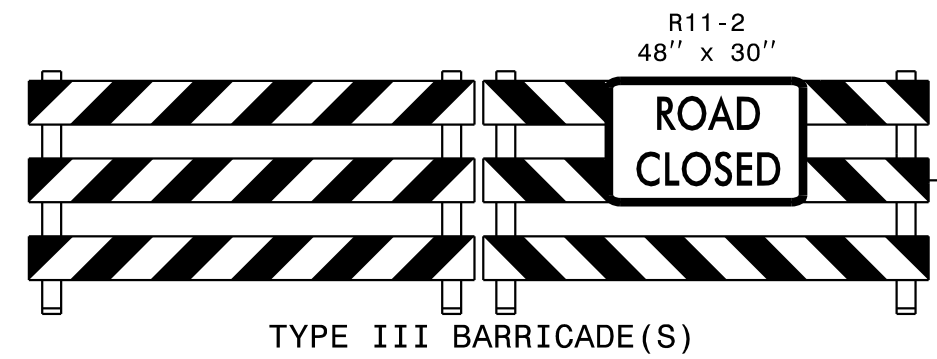


-L1- PREMIER BLVD EXT

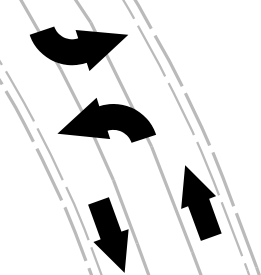


-Y6-

-Y7-



-L1- PREMIER BLVD

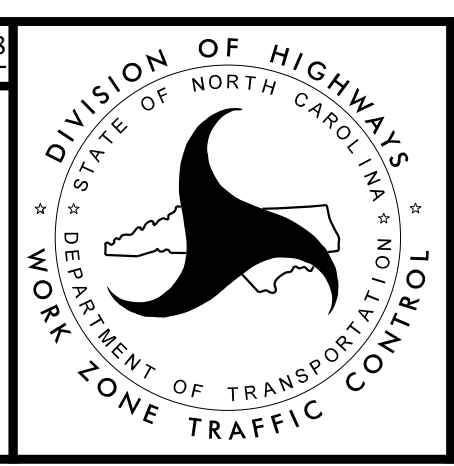


K:\RAL_Roadway\01036392 - R-3822 and U-5725\TrafficControl\Plan Sheets\R-3822_TCP_psh_23.dgn
6/28/2018

- WORK AREA
- PAVEMENT REMOVAL
- WEDGING

Kimley»Horn

APPROVED: David Shinkens DATE: 6/29/2018



**PHASE 2
TRAFFIC CONTROL
DETAILS**