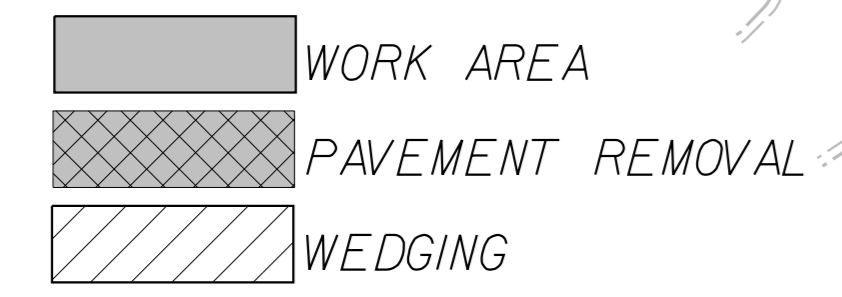
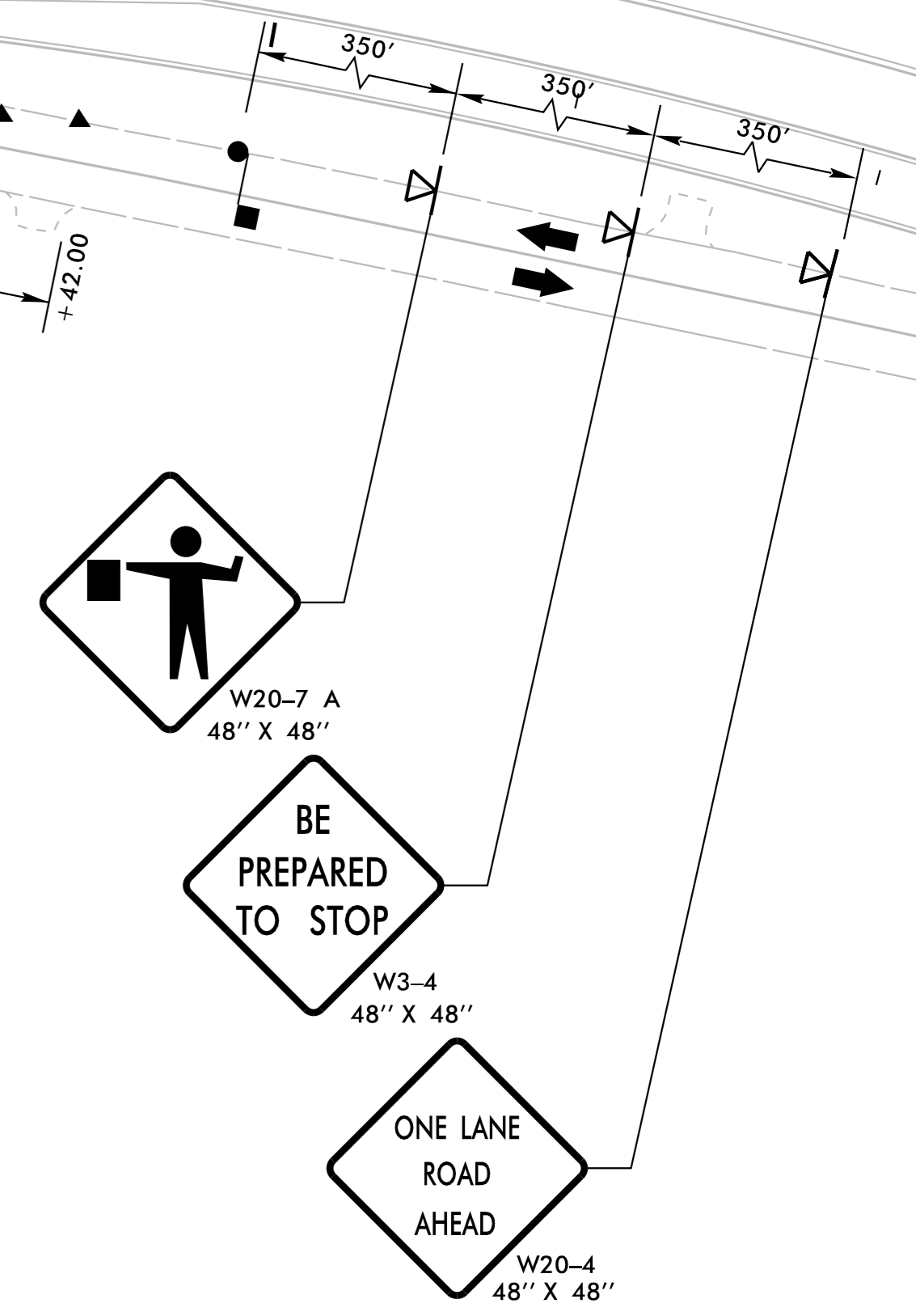
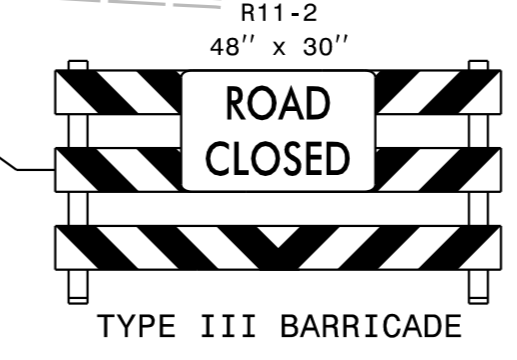
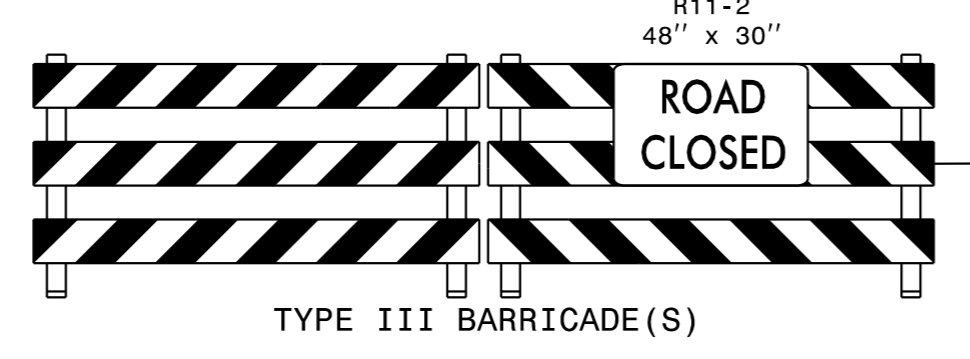
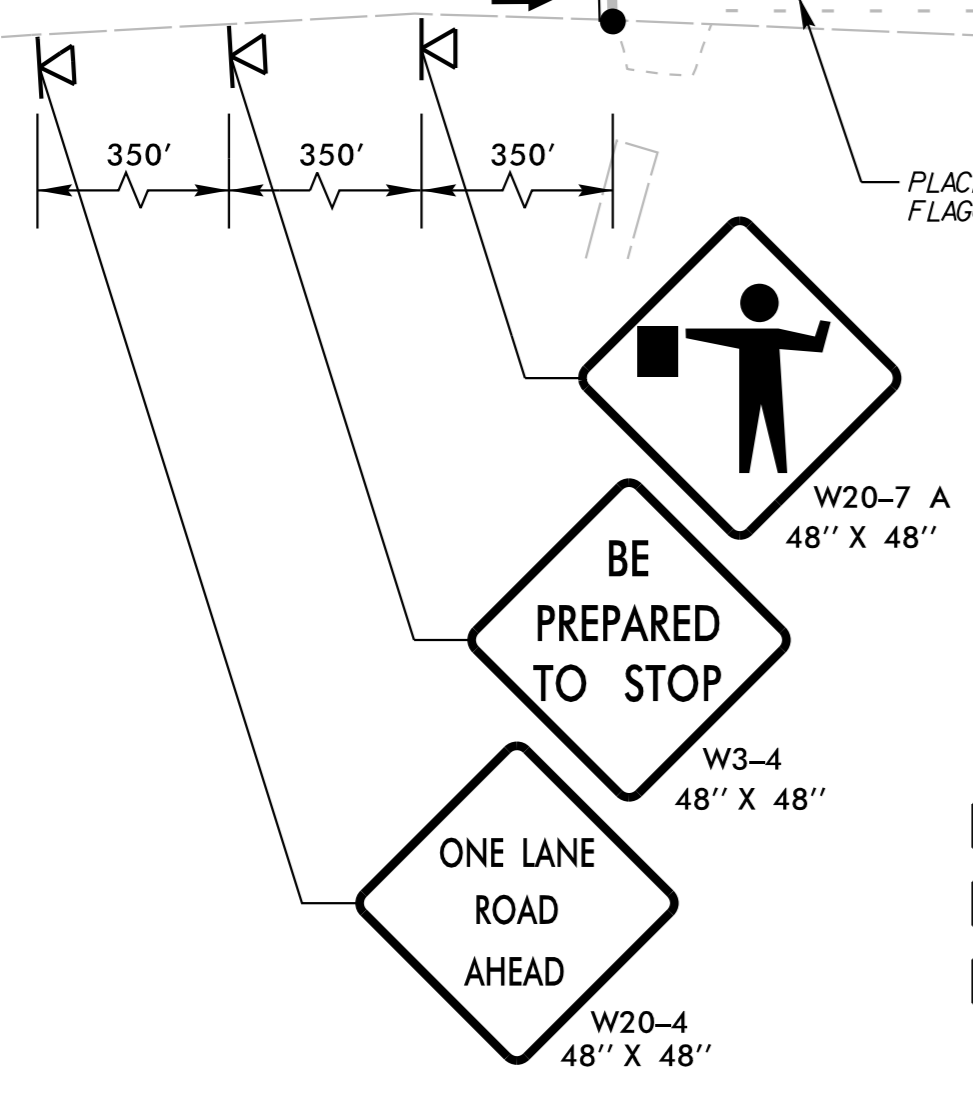
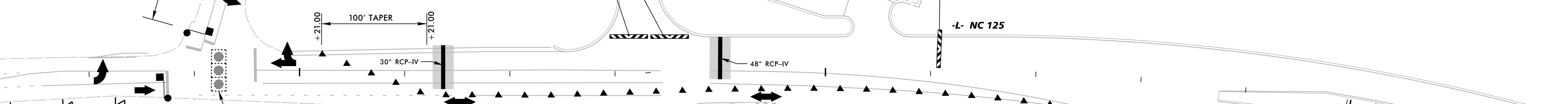
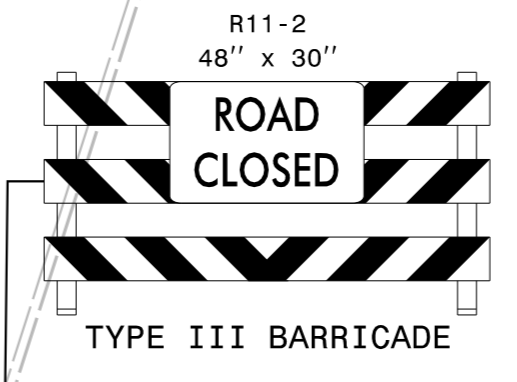
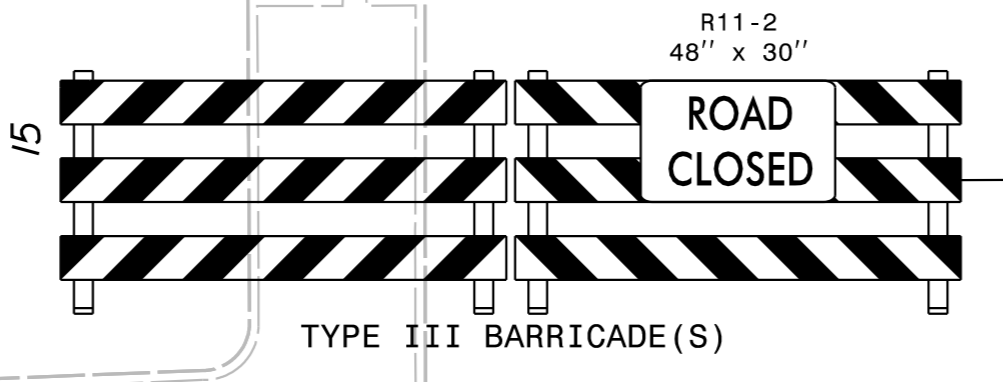
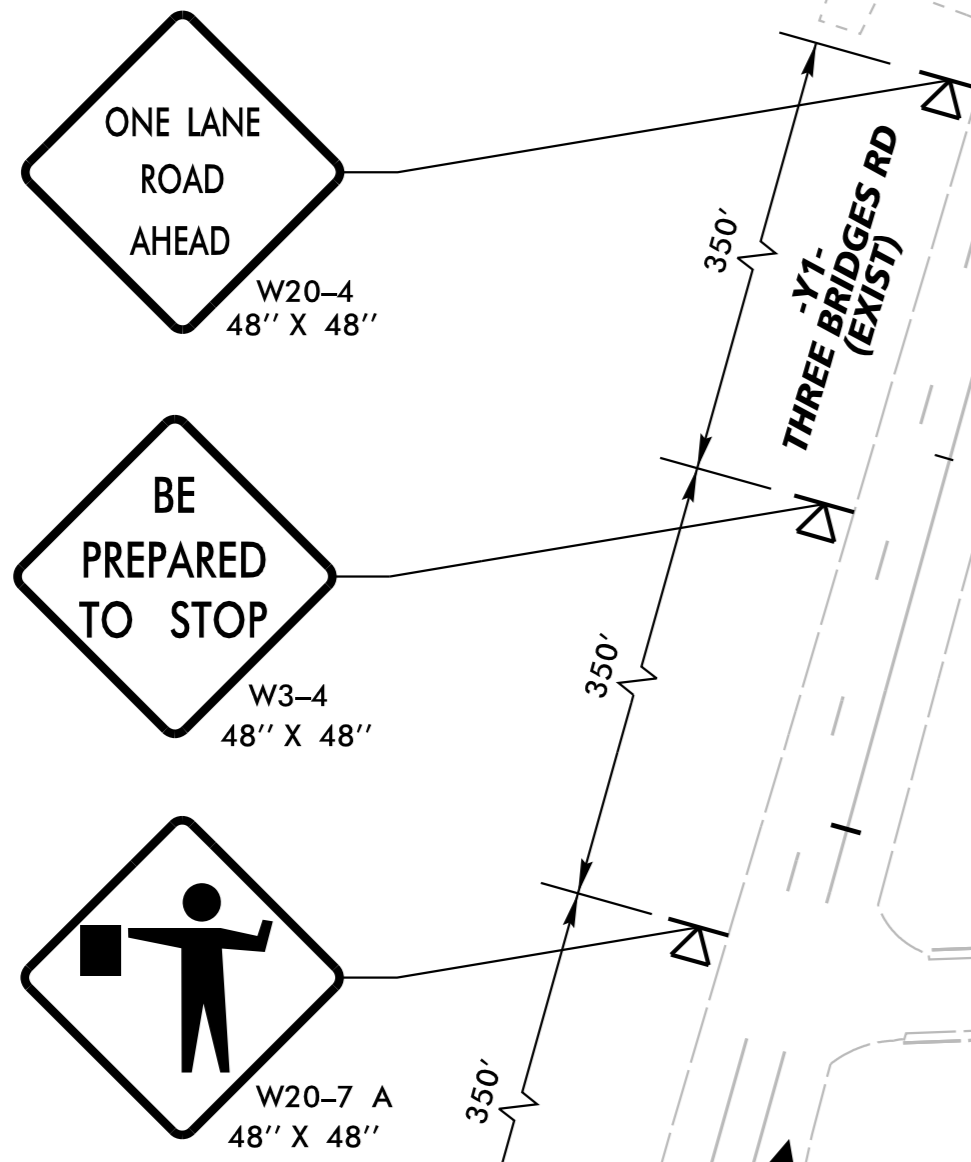
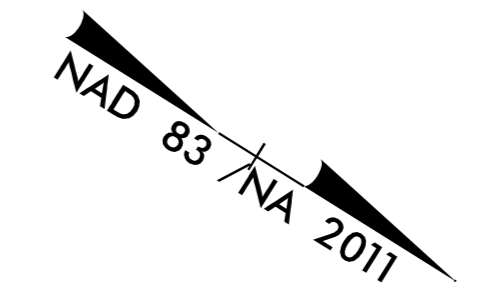


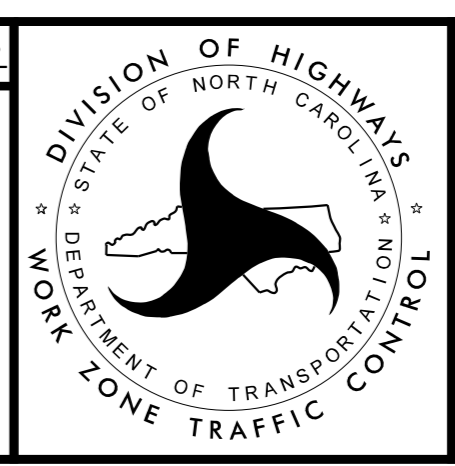
# PHASE 1 STEP 6B



K:\RAL\_Roadway\01036392 - R-3822 and U-5725\TrafficControl\Plan Sheets\R-3822\_TCP\_psh\_4\_step6B.dgn 6/28/2018

## Kimley»Horn

APPROVED: *David Shinkens* DATE: 6/29/2018



### PHASE 1 TRAFFIC CONTROL DETAILS