

5/14/99

-Y3-  
 PI Sta 26+58.52  
 $\Delta = 18^{\circ} 25' 43.3" (RT)$   
 $D = 5^{\circ} 43' 46.5"$   
 $L = 321.64'$   
 $T = 162.22'$   
 $R = 1,000.00'$   
 $e = 3.6$   
 $R_{cr} = 90'$

(70)  
 EDWARD L. DICKENS  
 SEE NOTE IN SURVEY REPORT  
 DB 1455 PG 116  
 PB 19 PG 74

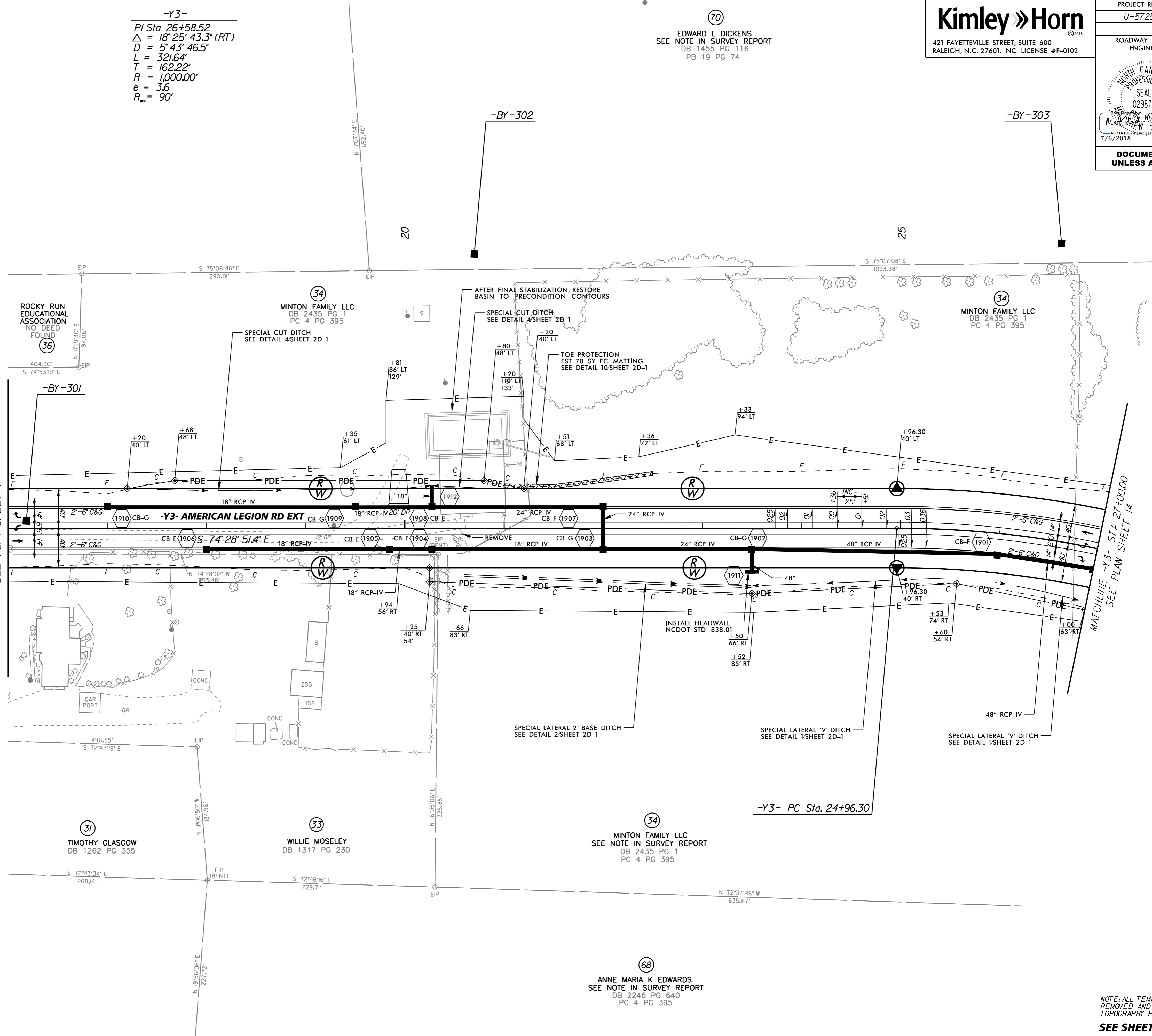
PROJECT REFERENCE NO. U-5725/R-3822		SHEET NO. 19	
R/W SHEET NO.			
ROADWAY DESIGN ENGINEER		HYDRAULICS ENGINEER	
DOCUMENT NOT CONSIDERED FINAL UNLESS ALL SIGNATURES COMPLETED			

MAD 83/NA 2011

REVISIONS

MATCHLINE -Y3- STA 16+00.00  
SEE PLAN SHEET 7

MATCHLINE -Y3- STA 27+00.00  
SEE PLAN SHEET 14



-Y3- PC Sta. 24+96.30

7/6/2018

NOTE: ALL TEMPORARY SEDIMENT TRAPS SHALL BE REMOVED AND REGRADED TO PRECONSTRUCTION TOPOGRAPHY PRIOR TO PROJECT COMPLETION.  
 SEE SHEET NO. 28 FOR -Y3- PROFILE