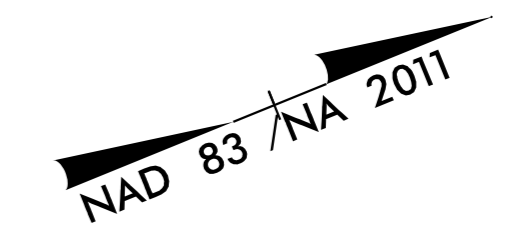


5/14/1999

Kimley Horn
421 FAYETTEVILLE STREET, SUITE 600
RALEIGH, N.C. 27601. NC LICENSE #F-0102

PROJECT REFERENCE NO. U-5725/R-3822		SHEET NO. 16	
R/W SHEET NO.			
ROADWAY DESIGN ENGINEER		HYDRAULICS ENGINEER	
DOCUMENT NOT CONSIDERED FINAL UNLESS ALL SIGNATURES COMPLETED			

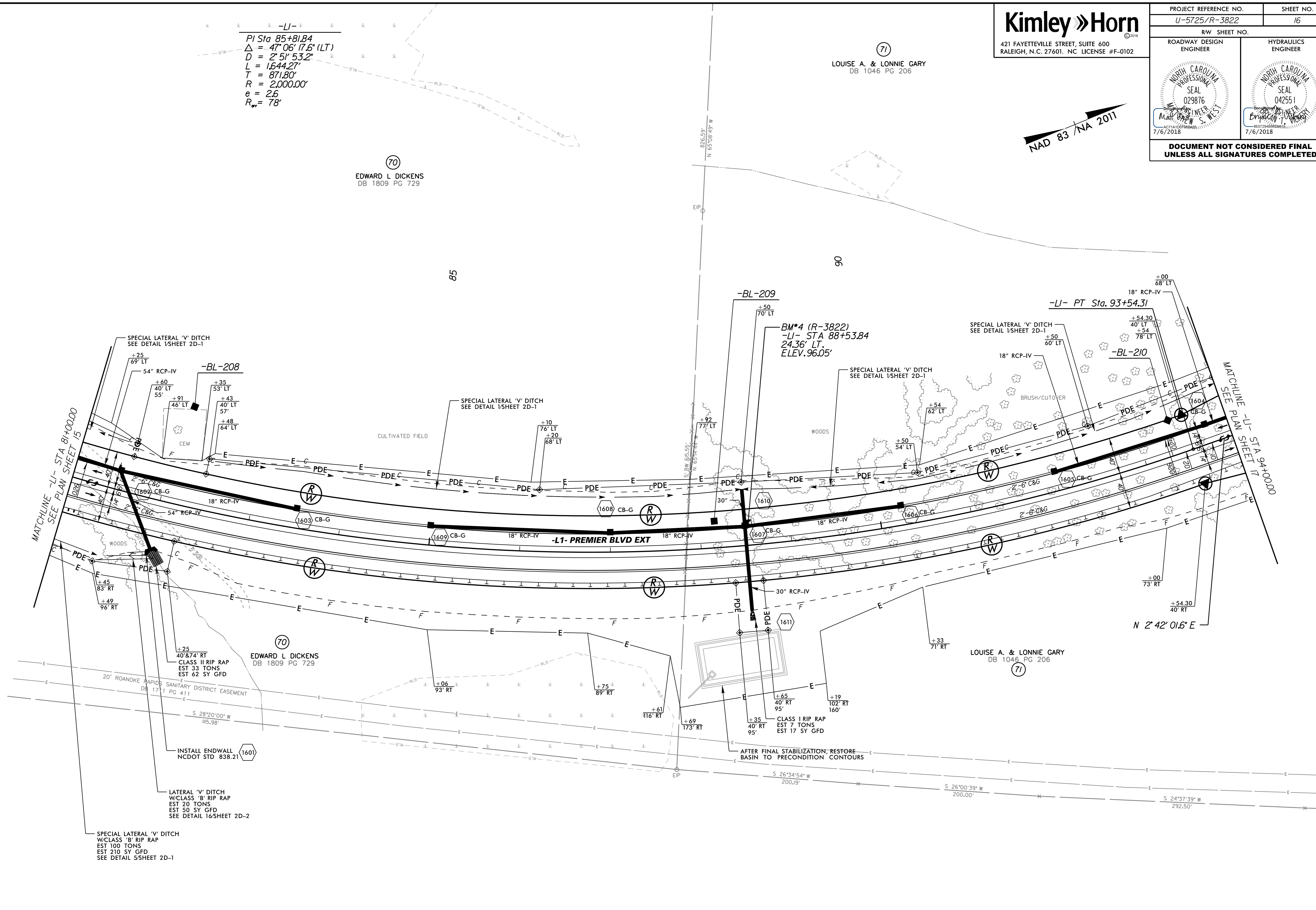


-L1-
 PI Sta 85+81.84
 $\Delta = 47^{\circ}06'17.6"$ (LT)
 $D = 2^{\circ}51'53.2"$
 $L = 1,644.27'$
 $T = 871.80'$
 $R = 2,000.00'$
 $e = 2.6$
 $R_{uv} = 78'$

(71)
 LOUISE A. & LONNIE GARY
 DB 1046 PG 206

(70)
 EDWARD L DICKENS
 DB 1809 PG 729

REVISIONS



MATCHLINE -L1- STA 81+00.00
 SEE PLAN SHEET 15

MATCHLINE -L1- STA 94+00.00
 SEE PLAN SHEET 17

SPECIAL LATERAL 'V' DITCH
 W/CLASS 'B' RIP RAP
 EST 100 TONS
 EST 210 SY GFD
 SEE DETAIL 5/SHEET 2D-1

LATERAL 'V' DITCH
 W/CLASS 'B' RIP RAP
 EST 20 TONS
 EST 50 SY GFD
 SEE DETAIL 16/SHEET 2D-2

INSTALL ENDWALL
 NCDOT STD 838.21 (1601)

20' ROANOKE RAPIDS SANITARY DISTRICT EASEMENT
 DB 17.1 PG 411

EDWARD L DICKENS
 DB 1809 PG 729

CLASS II RIP RAP
 EST 33 TONS
 EST 62 SY GFD

CLASS I RIP RAP
 EST 7 TONS
 EST 17 SY GFD

30" RCP-IV

18" RCP-IV

54" RCP-IV

54" RCP-IV

SPECIAL LATERAL 'V' DITCH
 SEE DETAIL 1/SHEET 2D-1

54" RCP-IV

54" RCP-IV

54" RCP-IV

54" RCP-IV

54" RCP-IV

54" RCP-IV

54" RCP-IV

54" RCP-IV

NOTE: ALL TEMPORARY SEDIMENT TRAPS SHALL BE REMOVED AND REGRADED TO PRECONSTRUCTION TOPOGRAPHY PRIOR TO PROJECT COMPLETION.
SEE SHEET NO. 26 FOR -L1- PROFILE

7/6/2018