

5/14/1999

-LI-  
 PI Sta 55+85.50  
 $\Delta = 13^\circ 41' 29.0" (RT)$   
 $D = 1' 02' 30.3"$   
 $L = 1,314.28'$   
 $T = 660.28'$   
 $R = 5,500.00'$   
 $e = NC$

# Kimley»Horn

421 FAYETTEVILLE STREET, SUITE 600  
 RALEIGH, N.C. 27601. NC LICENSE #F-0102

|  |  |                     |  |
|--|--|---------------------|--|
| PROJECT REFERENCE NO.<br>U-5725/R-3822                           |  | SHEET NO.<br>13     |  |
| ROADWAY DESIGN ENGINEER  |  | HYDRAULICS ENGINEER |  |
|  |  |                     |  |
| DOCUMENT NOT CONSIDERED FINAL<br>UNLESS ALL SIGNATURES COMPLETED |  |                     |  |

66  
 AUGUSTUS TURNER  
 DB 596 PG 161

68  
 ANNE MARIA K EDWARDS  
 SEE NOTE IN SURVEY REPORT  
 DB 2246 PG 640  
 PC 4 PG 395

68  
 ANNE MARIA K EDWARDS  
 SEE NOTE IN SURVEY REPORT  
 DB 2246 PG 640  
 PC 4 PG 395

67  
 COLLIER INVESTMENTS, INC  
 SEE NOTE IN SURVEY REPORT  
 DB 1970 PG 168  
 PC 4 PG 395

68  
 ANNE MARIA K EDWARDS  
 SEE NOTE IN SURVEY REPORT  
 DB 2246 PG 640  
 PC 4 PG 395

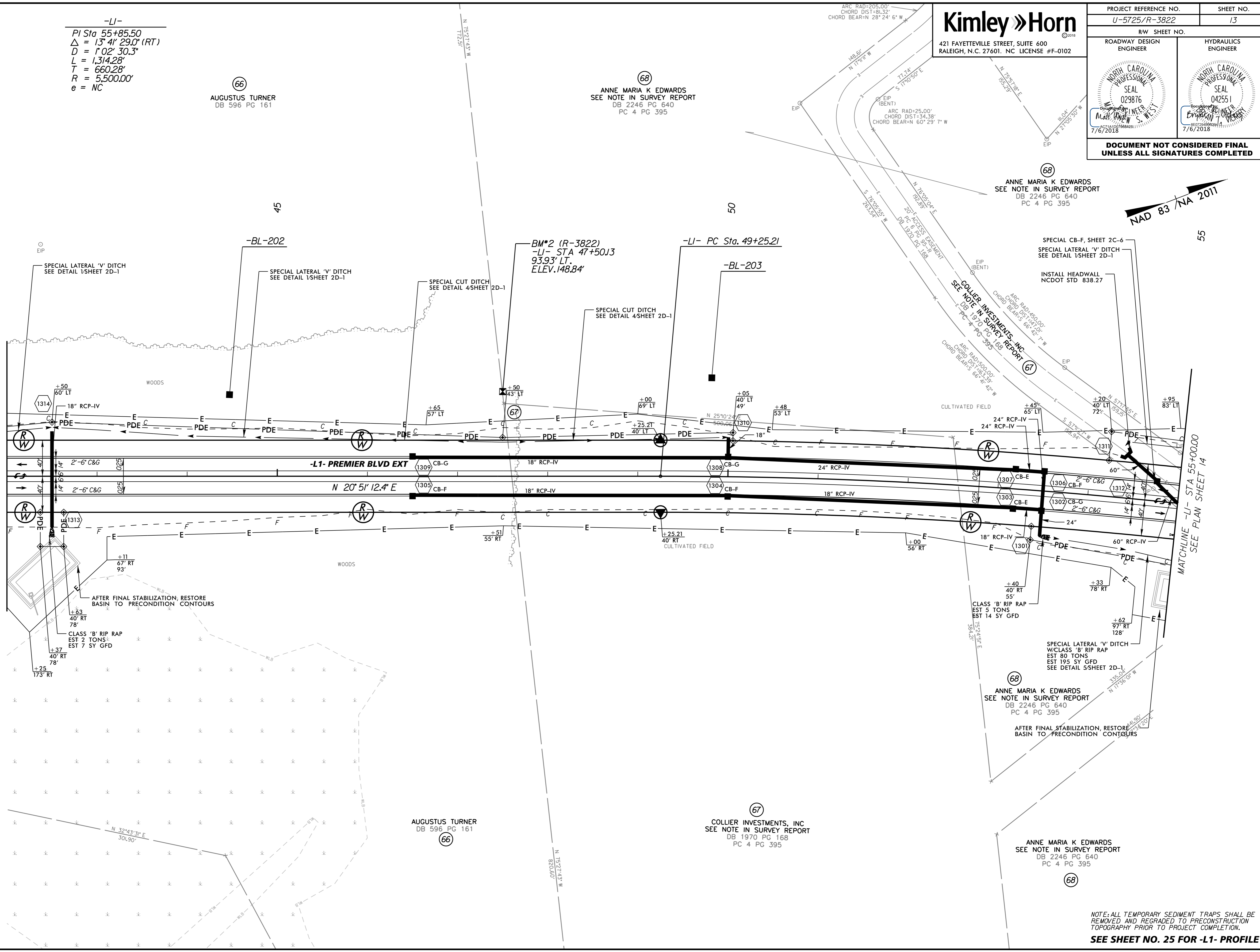
68  
 ANNE MARIA K EDWARDS  
 SEE NOTE IN SURVEY REPORT  
 DB 2246 PG 640  
 PC 4 PG 395

NOTE: ALL TEMPORARY SEDIMENT TRAPS SHALL BE REMOVED AND GRADED TO PRECONSTRUCTION TOPOGRAPHY PRIOR TO PROJECT COMPLETION.  
**SEE SHEET NO. 25 FOR -L1- PROFILE**

REVISIONS

MATCHLINE -LI- STA 42+00.00  
SEE PLAN SHEET 12

MATCHLINE -LI- STA 55+00.00  
SEE PLAN SHEET 14



7/6/2018