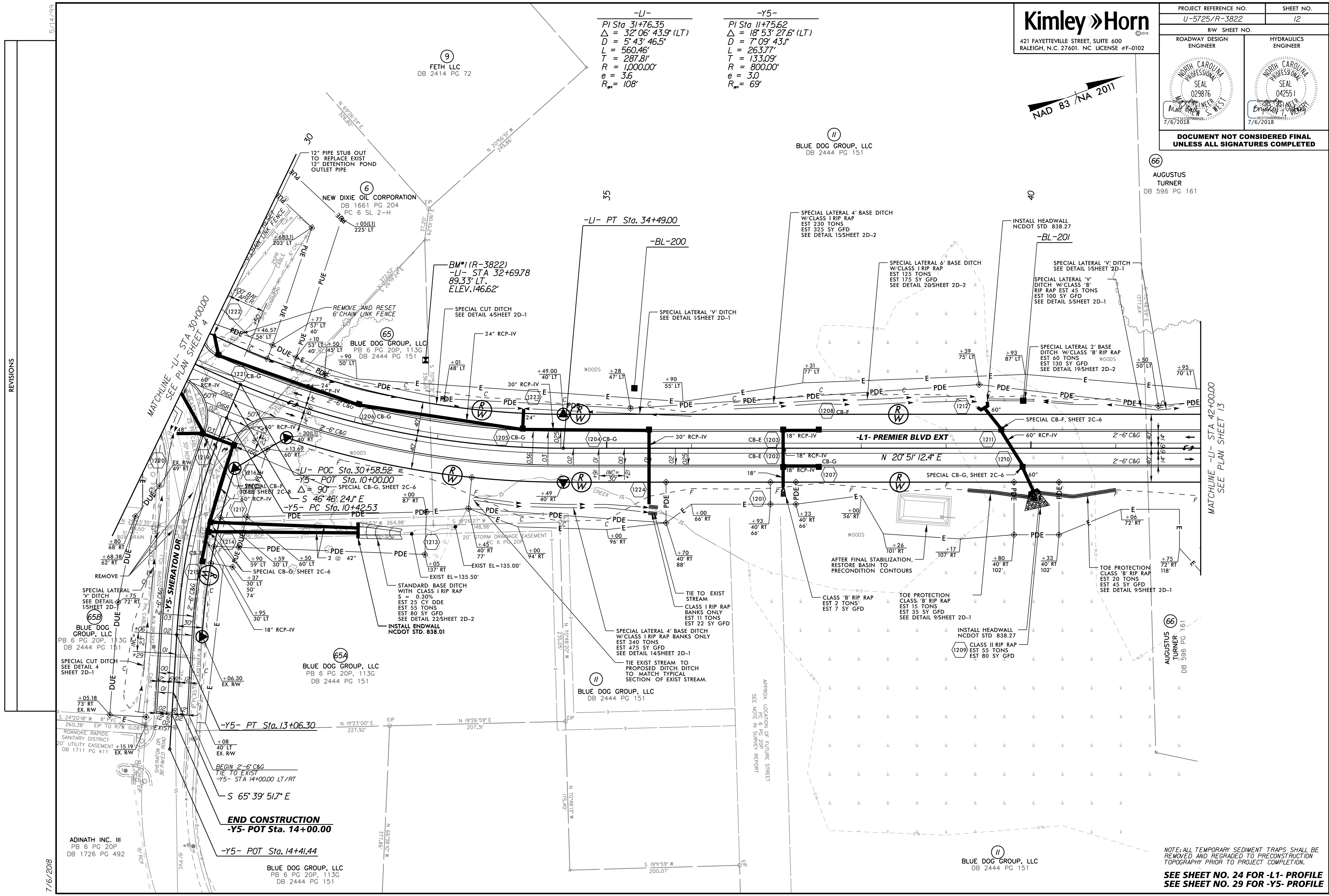


PROJECT REFERENCE NO. U-5725/R-3822	SHEET NO. 12
RW SHEET NO.	
ROADWAY DESIGN ENGINEER	HYDRAULICS ENGINEER
<b>DOCUMENT NOT CONSIDERED FINAL UNLESS ALL SIGNATURES COMPLETED</b>	

-LI-  
 PI Sta 31+76.35  
 $\Delta = 32' 06" 43.9" (LT)$   
 $D = 5' 43' 46.5"$   
 $L = 560.46'$   
 $T = 287.81'$   
 $R = 1,000.00'$   
 $e = 3.6$   
 $R_{\text{adj}} = 108'$

-Y5-  
 PI Sta 11+75.62  
 $\Delta = 18' 53' 27.6" (LT)$   
 $D = 7' 09' 43.1"$   
 $L = 263.77'$   
 $T = 133.09'$   
 $R = 800.00'$   
 $e = 3.0$   
 $R_{\text{adj}} = 69'$



REVISIONS

7/6/2018

NOTE: ALL TEMPORARY SEDIMENT TRAPS SHALL BE REMOVED AND REGRADED TO PRECONSTRUCTION TOPOGRAPHY PRIOR TO PROJECT COMPLETION.

**SEE SHEET NO. 24 FOR -LI- PROFILE**  
**SEE SHEET NO. 29 FOR -Y5- PROFILE**