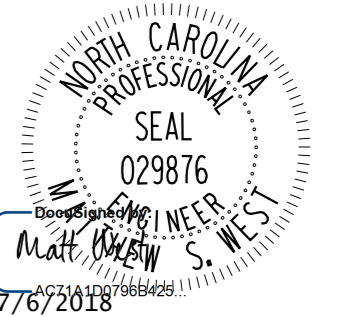

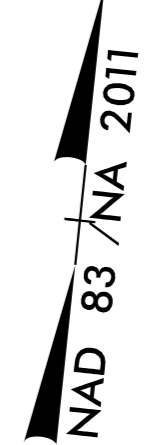
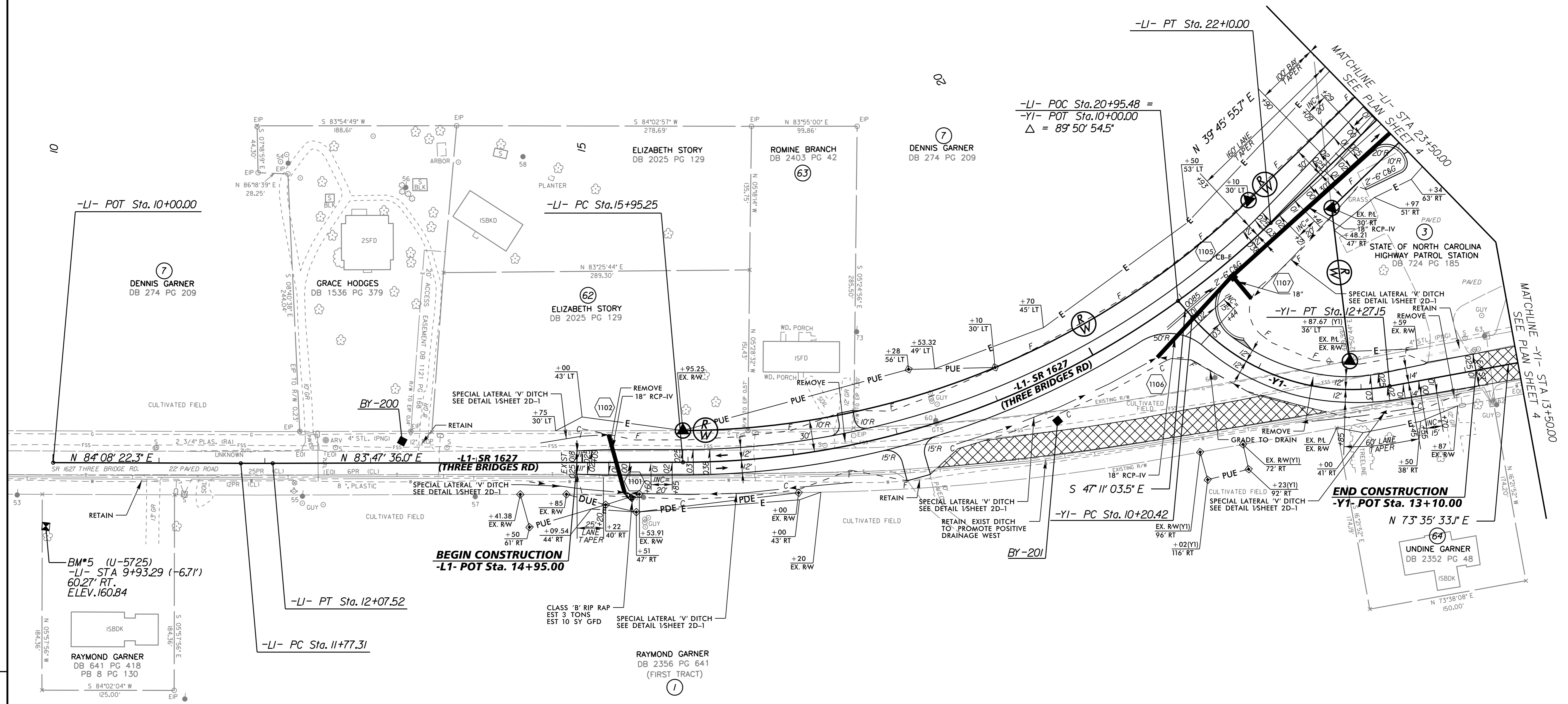


PROJECT REFERENCE NO. U-5725/R-3822		SHEET NO. 11	
ROADWAY DESIGN ENGINEER		HYDRAULICS ENGINEER	
			
DOCUMENT NOT CONSIDERED FINAL UNLESS ALL SIGNATURES COMPLETED			

-LI-		-YI-	
PI Sta 11+92.42	PI Sta 19+18.70	PI Sta 11+34.09	
$\Delta = 0' 20' 46.2" (LT)$	$\Delta = 44' 01' 40.4" (LT)$	$\Delta = 59' 13' 23.4" (LT)$	
$D = 1' 08' 45.3"$	$D = 7' 09' 43.3"$	$D = 28' 38' 52.4"$	
$L = 30.21'$	$L = 614.75'$	$L = 206.73'$	
$T = 15.10'$	$T = 323.45'$	$T = 113.67'$	
$R = 5,000.00'$	$R = 800.00'$	$R = 200.00'$	
	$e = 3.8$	$e = 3.0$	
	$R_{min} = 76'$	$R_{min} = 15'$	



REVISIONS



BM*5 (U-5725)
-LI- STA 9+93.29 (-6.71')
60.27' RT.
ELEV. 160.84

RAYMOND GARNER
DB 641 PG 418
PB 8 PG 130

NOTE: ALL TEMPORARY SEDIMENT TRAPS SHALL BE REMOVED AND REGRADED TO PRECONSTRUCTION TOPOGRAPHY PRIOR TO PROJECT COMPLETION.

**SEE SHEET NO. 23 FOR -L1- PROFILE
SEE SHEET NO. 27 FOR -Y1- PROFILE**