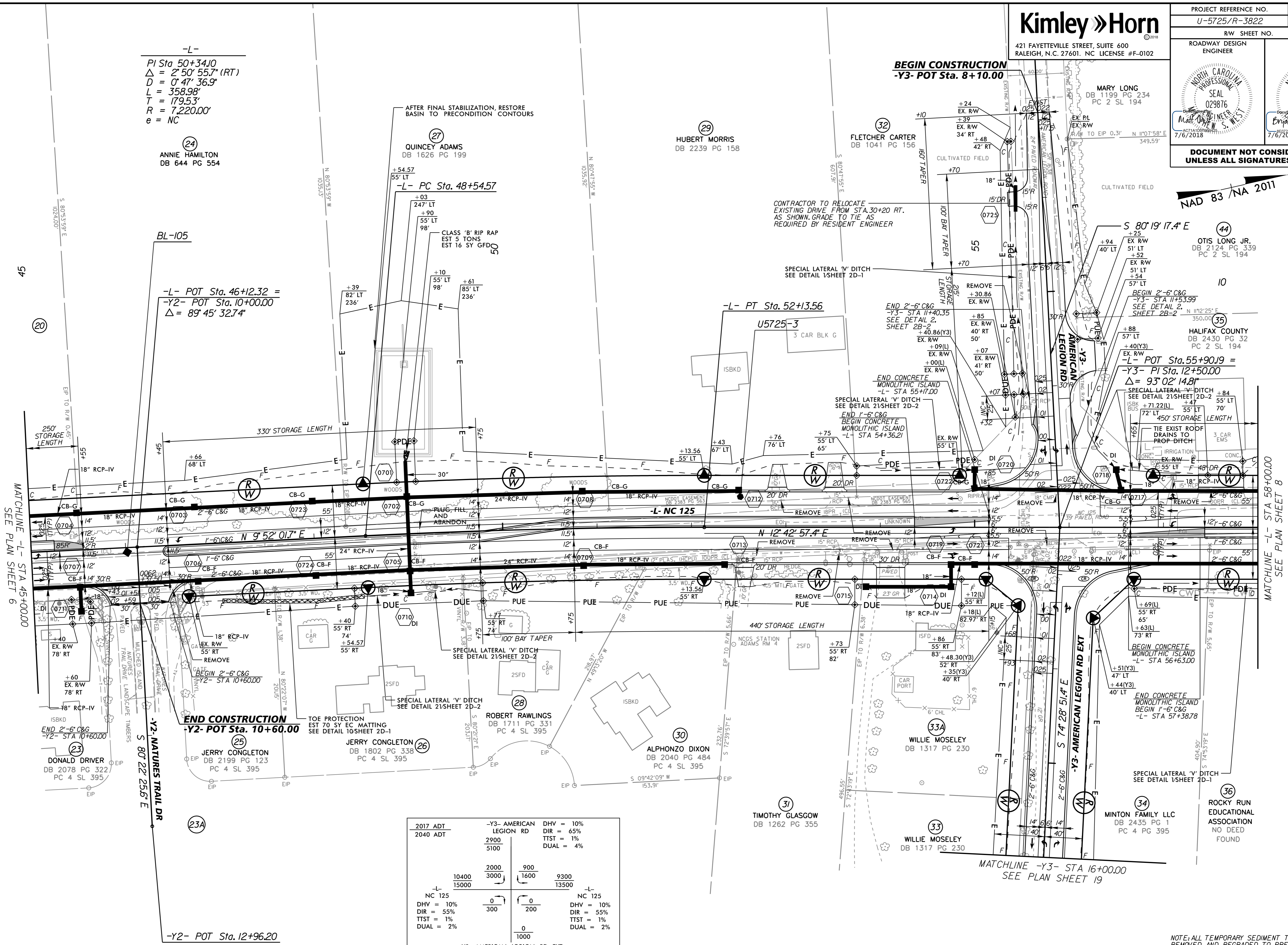


PROJECT REFERENCE NO. U-5725/R-3822	SHEET NO. 7
RW SHEET NO.	
ROADWAY DESIGN ENGINEER	HYDRAULICS ENGINEER
DOCUMENT NOT CONSIDERED FINAL UNLESS ALL SIGNATURES COMPLETED	

NAD 83 / NA 2011



-L-
 PI Sta 50+34.10
 $\Delta = 2^\circ 50' 55.7''$ (RT)
 $D = 0^\circ 47' 36.9''$
 $L = 358.98'$
 $T = 179.53'$
 $R = 7,220.00'$
 $e = NC$

-L- POT Sta. 46+12.32 =
 -Y2- POT Sta. 10+00.00
 $\Delta = 89^\circ 45' 32.74''$

END CONSTRUCTION
 -Y2- POT Sta. 10+60.00

BEGIN CONSTRUCTION
 -Y3- POT Sta. 8+10.00

2017 ADT 2040 ADT	-Y3- AMERICAN LEGIION RD	DHV = 10% DIR = 65% TTST = 1% DUAL = 4%
10400 15000	2900 5100	
NC 125	2000 3000	DHV = 10% DIR = 55% TTST = 1% DUAL = 2%
	900 1600	
	9300 13500	
	0 300	
	0 200	
	0 1000	
	-Y3- AMERICAN LEGIION RD EXT	DHV = 10% DIR = 55% TTST = 1% DUAL = 2%

NOTE: ALL TEMPORARY SEDIMENT TRAPS SHALL BE REMOVED AND REGRADED TO PRECONSTRUCTION TOPOGRAPHY PRIOR TO PROJECT COMPLETION.
SEE SHEET NO. 21 FOR -L- PROFILE
SEE SHEET NO. 28 FOR -Y2- PROFILE
SEE SHEET NO. 28 FOR -Y3- PROFILE

REVISIONS

5/14/99

7/6/2018