

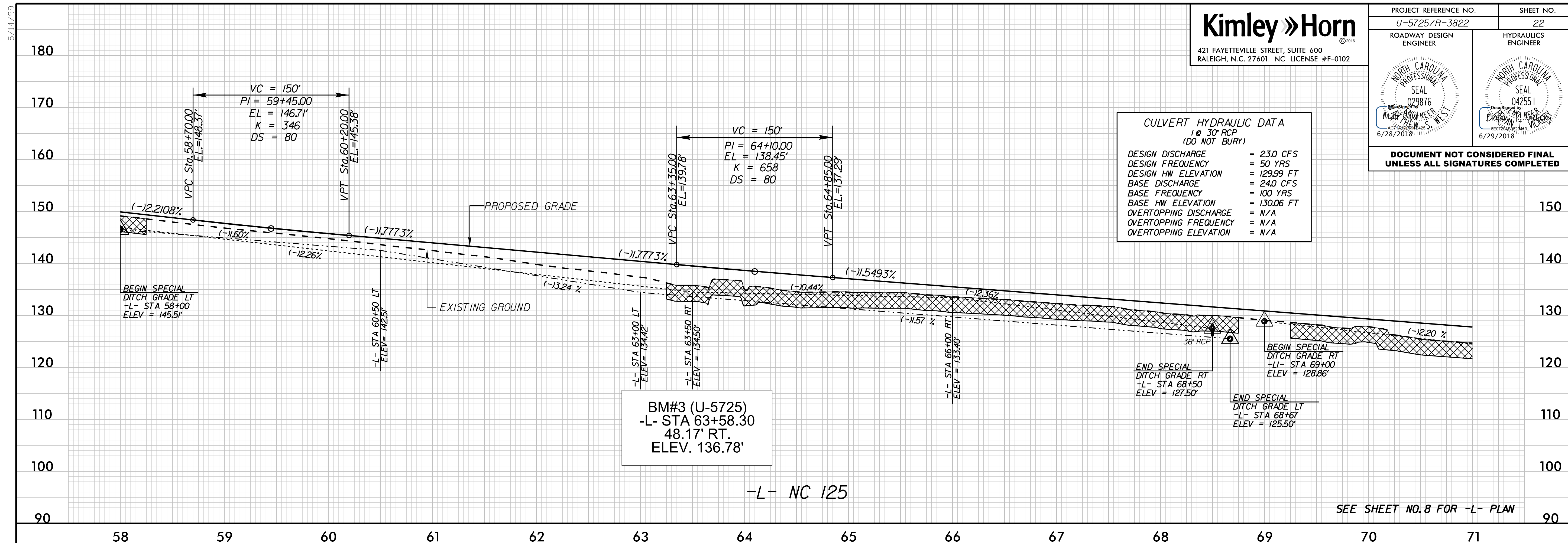
5/14/19

PROJECT REFERENCE NO. U-5725/R-3822	SHEET NO. 22
ROADWAY DESIGN ENGINEER	HYDRAULICS ENGINEER

**DOCUMENT NOT CONSIDERED FINAL  
UNLESS ALL SIGNATURES COMPLETED**

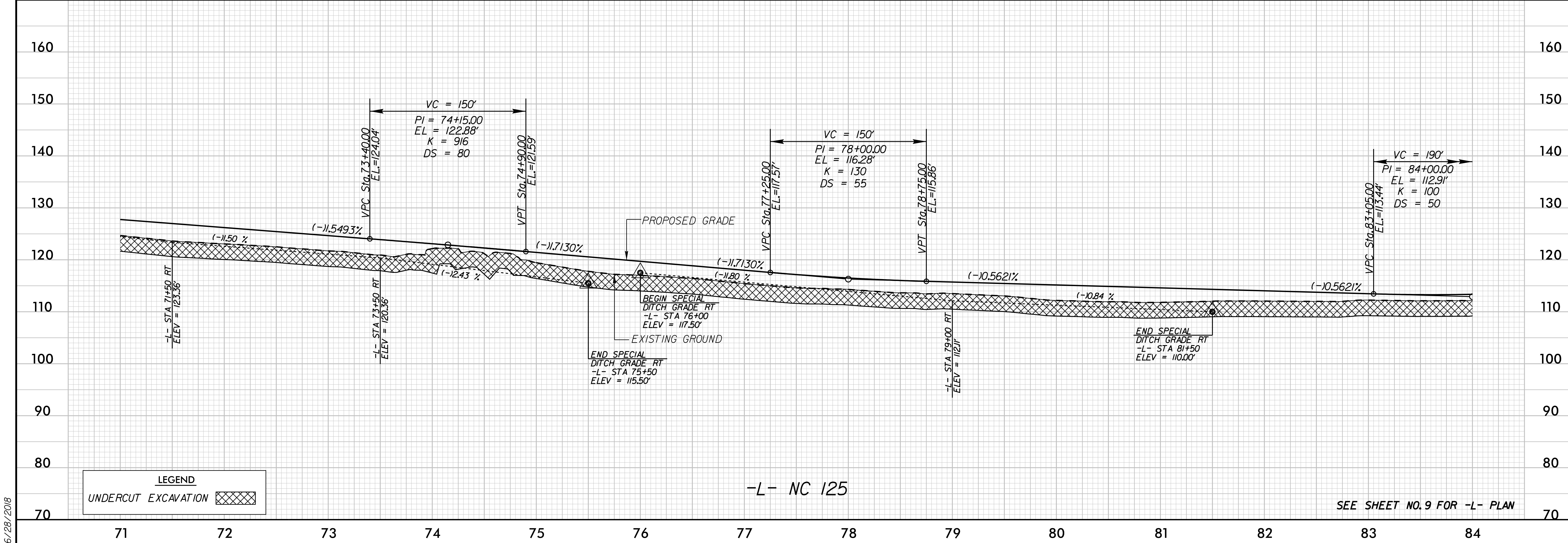
**CULVERT HYDRAULIC DATA**  
1 @ 30" RCP  
(DO NOT BURY)

DESIGN DISCHARGE	= 23.0 CFS
DESIGN FREQUENCY	= 50 YRS
DESIGN HW ELEVATION	= 129.99 FT
BASE DISCHARGE	= 24.0 CFS
BASE FREQUENCY	= 100 YRS
BASE HW ELEVATION	= 130.06 FT
OVERTOPPING DISCHARGE	= N/A
OVERTOPPING FREQUENCY	= N/A
OVERTOPPING ELEVATION	= N/A



-L- NC 125

SEE SHEET NO. 8 FOR -L- PLAN



-L- NC 125

SEE SHEET NO. 9 FOR -L- PLAN

6/28/2018