

5/14/19

-Y3-
 PI Sta 26+58.52
 $\Delta = 18^{\circ} 25' 43.3" (RT)$
 $D = 5^{\circ} 43' 46.5"$
 $L = 321.64'$
 $T = 162.22'$
 $R = 1,000.00'$
 $e = 3.6$
 $R_{\text{ext}} = 90'$

(70)
 EDWARD L. DICKENS
 SEE NOTE IN SURVEY REPORT
 DB 1455 PG 116
 PB 19 PG 74

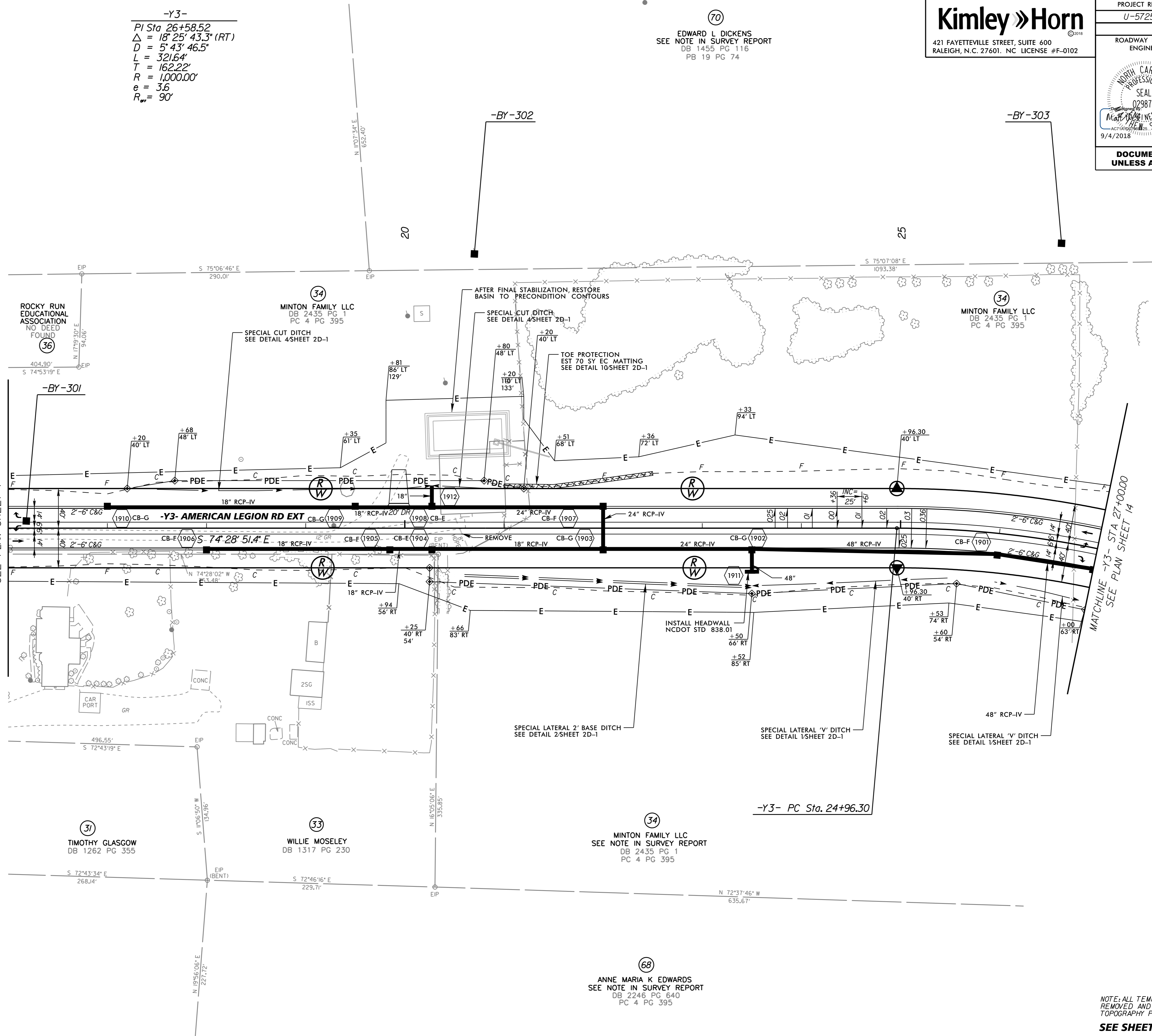
PROJECT REFERENCE NO. U-5725/R-3822		SHEET NO. 19	
RW SHEET NO.			
ROADWAY DESIGN ENGINEER		HYDRAULICS ENGINEER	
DOCUMENT NOT CONSIDERED FINAL UNLESS ALL SIGNATURES COMPLETED			

NAD 83 / N.A. 2011

REVISIONS

MATCHLINE -Y3- STA 16+00.00
SEE PLAN SHEET 7

MATCHLINE -Y3- STA 27+00.00
SEE PLAN SHEET 14



-Y3- PC Sta. 24+96.30

(37)
 TIMOTHY GLASGOW
 DB 1262 PG 355

(33)
 WILLIE MOSELEY
 DB 1317 PG 230

(34)
 MINTON FAMILY LLC
 SEE NOTE IN SURVEY REPORT
 DB 2435 PG 1
 PC 4 PG 395

(68)
 ANNE MARIA K EDWARDS
 SEE NOTE IN SURVEY REPORT
 DB 2246 PG 640
 PC 4 PG 395

NOTE: ALL TEMPORARY SEDIMENT TRAPS SHALL BE REMOVED AND REGRADED TO PRECONSTRUCTION TOPOGRAPHY PRIOR TO PROJECT COMPLETION.
 SEE SHEET NO. 28 FOR -Y3- PROFILE

9/4/2018