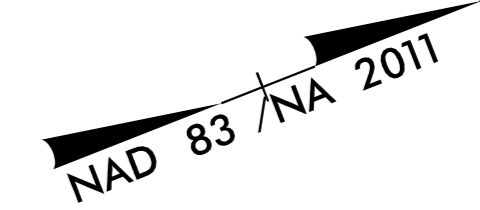
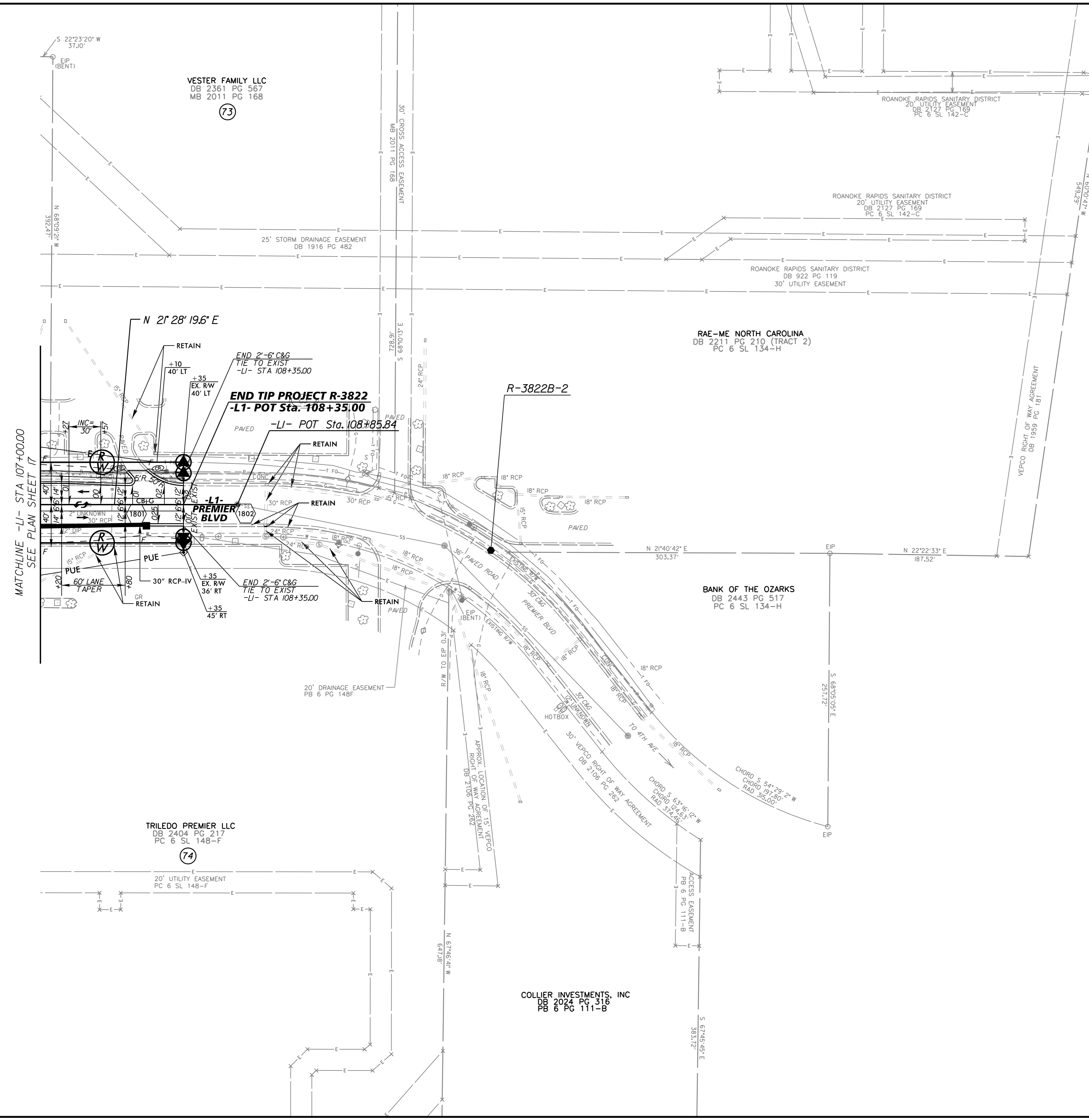


PROJECT REFERENCE NO. U-5725/R-3822		SHEET NO. 18	
RW SHEET NO.			
ROADWAY DESIGN ENGINEER		HYDRAULICS ENGINEER	
DOCUMENT NOT CONSIDERED FINAL UNLESS ALL SIGNATURES COMPLETED			



REVISIONS



MATCHLINE -L1- STA 107+00.00
SEE PLAN SHEET 17

END TIP PROJECT R-3822
-L1- POT Sta. 108+35.00

-L1- POT Sta. 108+85.84

TRILEDO PREMIER LLC
DB 2404 PG 217
PC 6 SL 148-F
(74)

COLLIER INVESTMENTS, INC
DB 2024 PG 318
PB 6 PG 111-B

NOTE: ALL TEMPORARY SEDIMENT TRAPS SHALL BE REMOVED AND REGRADED TO PRECONSTRUCTION TOPOGRAPHY PRIOR TO PROJECT COMPLETION.
SEE SHEET NO. 27 FOR -L1- PROFILE

9/4/2018