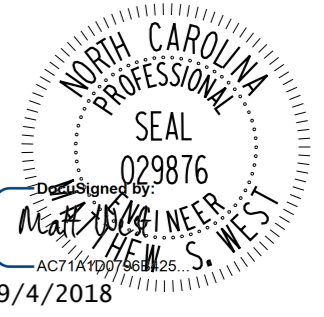
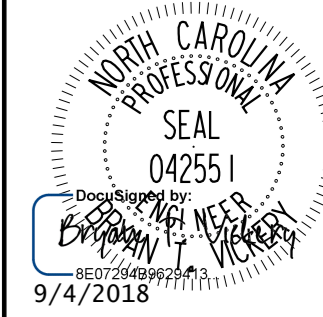
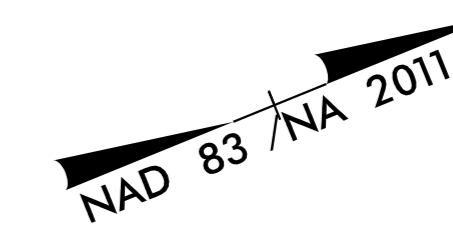


5/14/19

Kimley»Horn

421 FAYETTEVILLE STREET, SUITE 600
RALEIGH, N.C. 27601. NC LICENSE #F-0102

PROJECT REFERENCE NO. U-5725/R-3822		SHEET NO. 16	
ROADWAY DESIGN ENGINEER		HYDRAULICS ENGINEER	
			

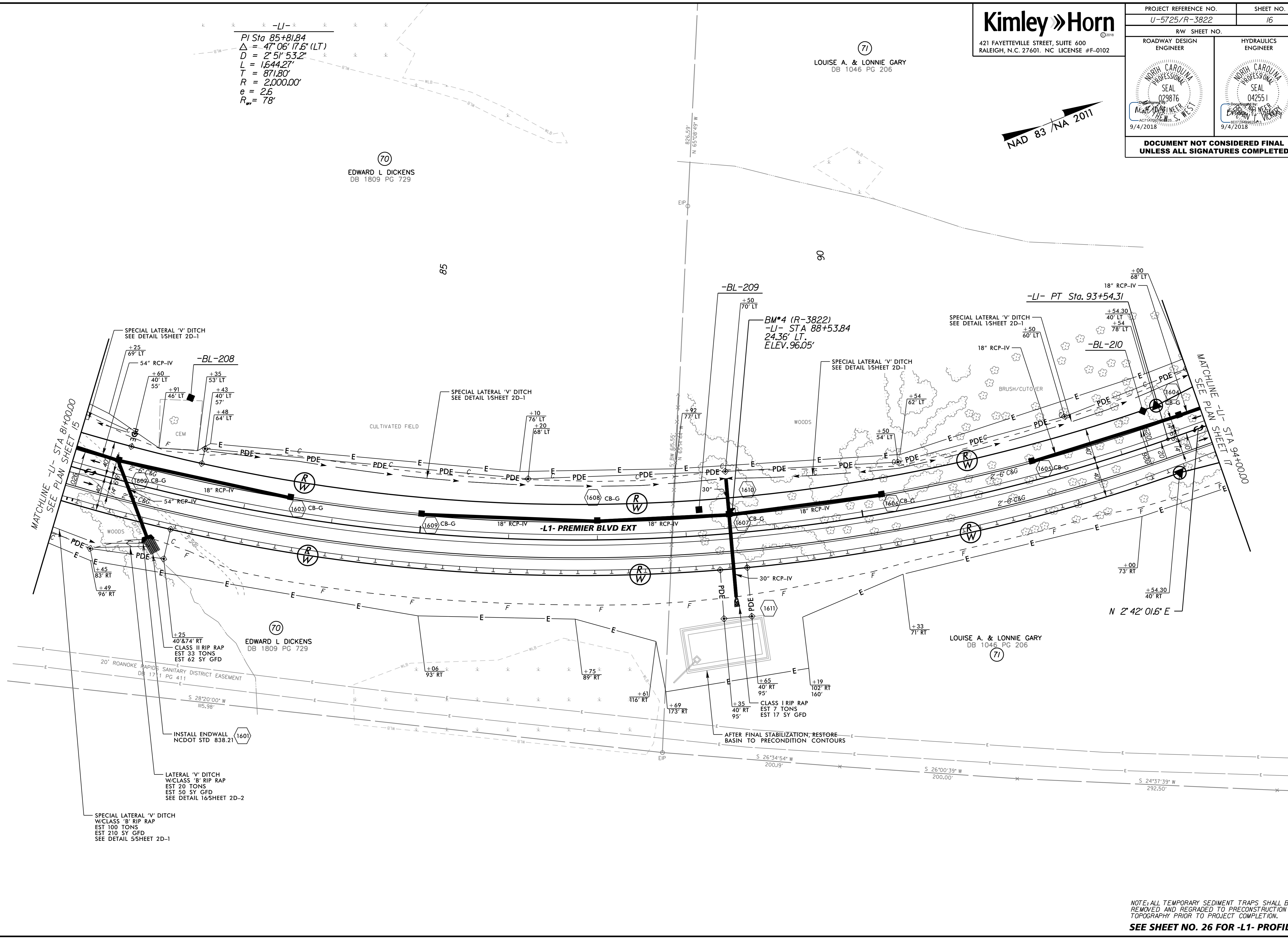


-L1-
 PI Sta 85+81.84
 $\Delta = 47^{\circ}06'17.6" (LT)$
 $D = 2^{\circ}51'53.2"$
 $L = 1,644.27'$
 $T = 871.80'$
 $R = 2,000.00'$
 $e = 2.6'$
 $R_{\text{min}} = 78'$

(71)
 LOUISE A. & LONNIE GARY
 DB 1046 PG 206

(70)
 EDWARD L DICKENS
 DB 1809 PG 729

REVISIONS



MATCHLINE -L1- STA 81+00.00
 SEE PLAN SHEET 15

MATCHLINE -L1- STA 94+00.00
 SEE PLAN SHEET 17

(70)
 EDWARD L DICKENS
 DB 1809 PG 729

(71)
 LOUISE A. & LONNIE GARY
 DB 1046 PG 206

INSTALL ENDWALL
 NCDOT STD 838.21 (1601)

LATERAL 'V' DITCH
 W/CLASS 'B' RIP RAP
 EST 20 TONS
 EST 50 SY GFD
 SEE DETAIL 16/SHEET 2D-2

SPECIAL LATERAL 'V' DITCH
 W/CLASS 'B' RIP RAP
 EST 100 TONS
 EST 210 SY GFD
 SEE DETAIL 5/SHEET 2D-1

AFTER FINAL STABILIZATION, RESTORE
 BASIN TO PRECONSTRUCTION CONTOURS

NOTE: ALL TEMPORARY SEDIMENT TRAPS SHALL BE
 REMOVED AND REGRADED TO PRECONSTRUCTION
 TOPOGRAPHY PRIOR TO PROJECT COMPLETION.
SEE SHEET NO. 26 FOR -L1- PROFILE

9/4/2018