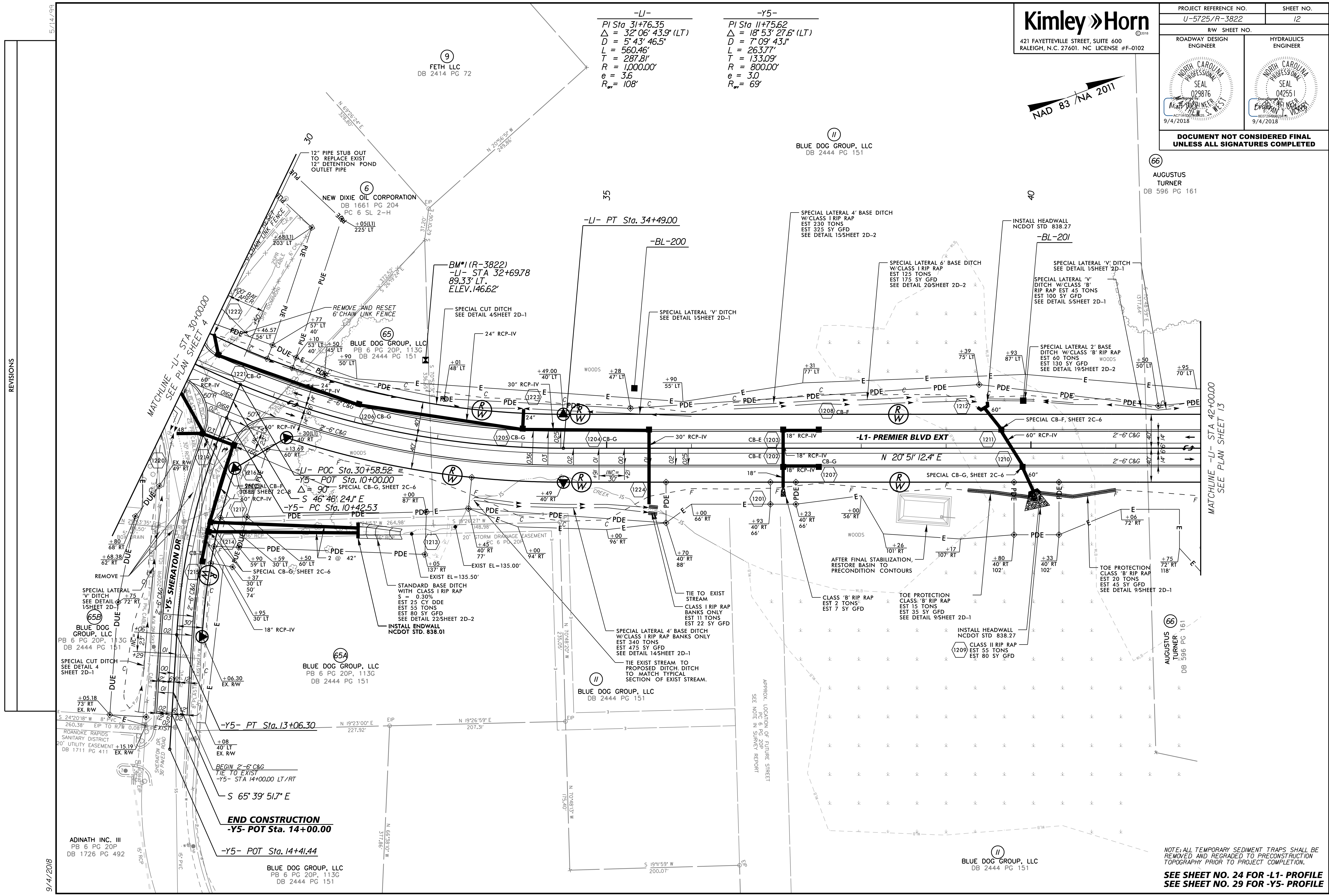


| | |
|--|---------------------|
| PROJECT REFERENCE NO. U-5725/R-3822 | SHEET NO. 12 |
| ROADWAY DESIGN ENGINEER | HYDRAULICS ENGINEER |
| | |
| DOCUMENT NOT CONSIDERED FINAL UNLESS ALL SIGNATURES COMPLETED | |

-LI-
 PI Sta 31+76.35
 $\Delta = 32'06''43.9''$ (LT)
 $D = 5'43'46.5''$
 $L = 560.46'$
 $T = 287.81'$
 $R = 1,000.00'$
 $e = 3.6'$
 $R_{\text{min}} = 108'$

-Y5-
 PI Sta 11+75.62
 $\Delta = 18'53'27.6''$ (LT)
 $D = 7'09'43.1''$
 $L = 263.77'$
 $T = 133.09'$
 $R = 800.00'$
 $e = 3.0'$
 $R_{\text{min}} = 69'$



REVISIONS

5/14/19

9/14/2018

66
AUGUSTUS TURNER
DB 596 PG 161

66
AUGUSTUS TURNER
DB 596 PG 161

NOTE: ALL TEMPORARY SEDIMENT TRAPS SHALL BE REMOVED AND REGRADED TO PRECONSTRUCTION TOPOGRAPHY PRIOR TO PROJECT COMPLETION.

SEE SHEET NO. 24 FOR -L1- PROFILE
SEE SHEET NO. 29 FOR -Y5- PROFILE