

PROJECT REFERENCE NO. U-5725/R-3822	SHEET NO. 10
ROADWAY DESIGN ENGINEER	HYDRAULICS ENGINEER
DOCUMENT NOT CONSIDERED FINAL UNLESS ALL SIGNATURES COMPLETED	

-L-	-Y4-	-Y4-
PI Sta 88+87.76 Δ = 12° 35' 34.1" (RT) D = 1' 25' 56.6" L = 879.14' T = 441.35' R = 4,000.00' e = RC R _{min} = 120'	PI Sta 12+36.98 Δ = 1° 18' 03.4" (LT) D = 5' 43' 46.5" L = 22.71' T = 11.35' R = 1,000.00'	PI Sta 14+50.78 Δ = 47° 37' 20.1" (LT) D = 15' 54' 55.8" L = 299.22' T = 158.86' R = 360.00' e = 3.8 R _{min} = 76'

-DRW2-	
PI Sta 10+97.28 Δ = 51° 04' 39.4" (LT) D = 57° 17' 44.8" L = 89.15' T = 47.78' R = 100.00'	PI Sta 11+75.29 Δ = 40° 15' 07.4" (RT) D = 57° 17' 44.8" L = 70.25' T = 36.65' R = 100.00'

GOOD NEWS BAPTIST CHURCH OF ROANOKE RAPIDS INC
DB 2319 PG 507
MB 17 PG 89

-Y4- PC Sta. 12+25.63
-Y4- PT Sta. 12+48.33
S 18° 28' 12.9" E
-Y4- PC Sta. 12+91.92

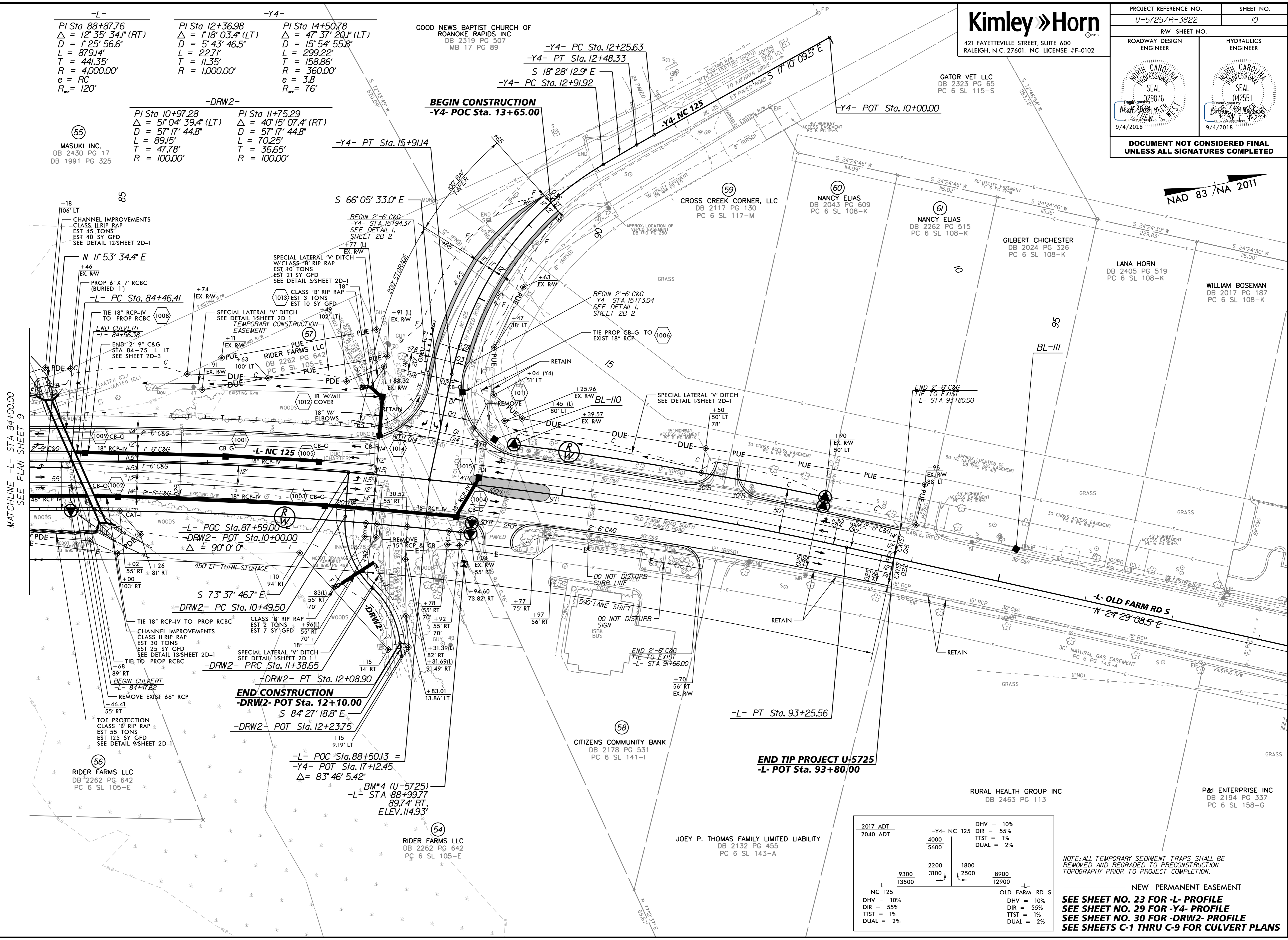
BEGIN CONSTRUCTION
-Y4- POC Sta. 13+65.00

-Y4- POT Sta. 10+00.00

MATCHLINE -L- STA 84+00.00
SEE PLAN SHEET 9

5/14/1991

NAD 83 / NA 2011



CHANNEL IMPROVEMENTS
CLASS II RIP RAP
EST 45 TONS
EST 40 SY GFD
SEE DETAIL 12/SHEET 2D-1

N 11° 53' 34.4" E

-L- PC Sta. 84+46.41

END CULVERT
-L- STA 84+56.38

END 2'-9" C&G
STA 84+75 -L- LT
SEE SHEET 2D-3

END 2'-6" C&G
-L- STA 87+59.00

-DRW2- POT Sta. 10+00.00
Δ = 90° 0' 0"

END CONSTRUCTION
-DRW2- POT Sta. 12+10.00
S 84° 27' 18.8" E

-DRW2- POT Sta. 12+23.75

END CONSTRUCTION
-DRW2- POT Sta. 11+38.65

-DRW2- PT Sta. 12+08.90

-L- POC Sta. 88+50.13 =
-Y4- POT Sta. 17+12.45
Δ = 83° 46' 5.42"

BM*4 (U-5725)
-L- STA 88+99.77
89.74' RT.
ELEV. 114.93'

RIDER FARMS LLC
DB 2262 PG 642
PC 6 SL 105-E

BEGIN 2'-6" C&G
-Y4- STA 15+94.37
SEE DETAIL 1,
SHEET 2B-2

BEGIN 2'-6" C&G
-Y4- STA 15+73.04
SEE DETAIL 1,
SHEET 2B-2

END 2'-6" C&G
TIE TO EXIST
-L- STA 93+80.00

END TIP PROJECT U-5725
-L- POT Sta. 93+80.00

DO NOT DISTURB CURB LINE

DO NOT DISTURB SIGN BUS

CITIZENS COMMUNITY BANK
DB 2178 PG 531
PC 6 SL 141-I

JOEY P. THOMAS FAMILY LIMITED LIABILITY
DB 2132 PG 455
PC 6 SL 143-A

CROSS CREEK CORNER, LLC
DB 2117 PG 130
PC 6 SL 117-M

NANCY ELIAS
DB 2043 PG 609
PC 6 SL 108-K

NANCY ELIAS
DB 2262 PG 515
PC 6 SL 108-K

GILBERT CHICHESTER
DB 2024 PG 326
PC 6 SL 108-K

LANA HORN
DB 2405 PG 519
PC 6 SL 108-K

WILLIAM BOSEMAN
DB 2017 PG 187
PC 6 SL 108-K

RURAL HEALTH GROUP INC
DB 2463 PG 113

P&I ENTERPRISE INC
DB 2194 PG 337
PC 6 SL 158-G

2017 ADT	-Y4- NC 125	DHV = 10%
2040 ADT	4000	DIR = 55%
	5600	TTST = 1%
		DUAL = 2%
	2200	
	3100	
	1800	
	2500	
	8900	
	13500	
		12900

NOTE: ALL TEMPORARY SEDIMENT TRAPS SHALL BE REMOVED AND REGRADED TO PRECONSTRUCTION TOPOGRAPHY PRIOR TO PROJECT COMPLETION.

NEW PERMANENT EASEMENT
SEE SHEET NO. 23 FOR -L- PROFILE
SEE SHEET NO. 29 FOR -Y4- PROFILE
SEE SHEET NO. 30 FOR -DRW2- PROFILE
SEE SHEETS C-1 THRU C-9 FOR CULVERT PLANS

REVISIONS

9/4/2018