

Kimley Horn

421 FAYETTEVILLE STREET, SUITE 600
RALEIGH, N.C. 27601, NC LICENSE #F-0102

PROJECT REFERENCE NO. U-5725/R-3822	SHEET NO. 7
RW SHEET NO.	
ROADWAY DESIGN ENGINEER	HYDRAULICS ENGINEER

**DOCUMENT NOT CONSIDERED FINAL
UNLESS ALL SIGNATURES COMPLETED**

NAD 83 / NA 2011

-L-
 PI Sta 50+34.10
 $\Delta = 2^{\circ} 50' 55.7''$ (RT)
 $D = 0^{\circ} 47' 36.9''$
 $L = 358.98'$
 $T = 179.53'$
 $R = 7,220.00'$
 $e = NC$

(24)
 ANNIE HAMILTON
 DB 644 PG 554

AFTER FINAL STABILIZATION, RESTORE
 BASIN TO PRECONSTRUCTION CONTOURS

(27)
 QUINCEY ADAMS
 DB 1626 PG 199

(29)
 HUBERT MORRIS
 DB 2239 PG 158

(32)
 FLETCHER CARTER
 DB 1041 PG 156

MARY LONG
 DB 1199 PG 234
 PC 2 SL 194

(44)
 OTIS LONG JR.
 DB 2124 PG 339
 PC 2 SL 194

(35)
 HALIFAX COUNTY
 DB 2430 PG 32
 PC 2 SL 194

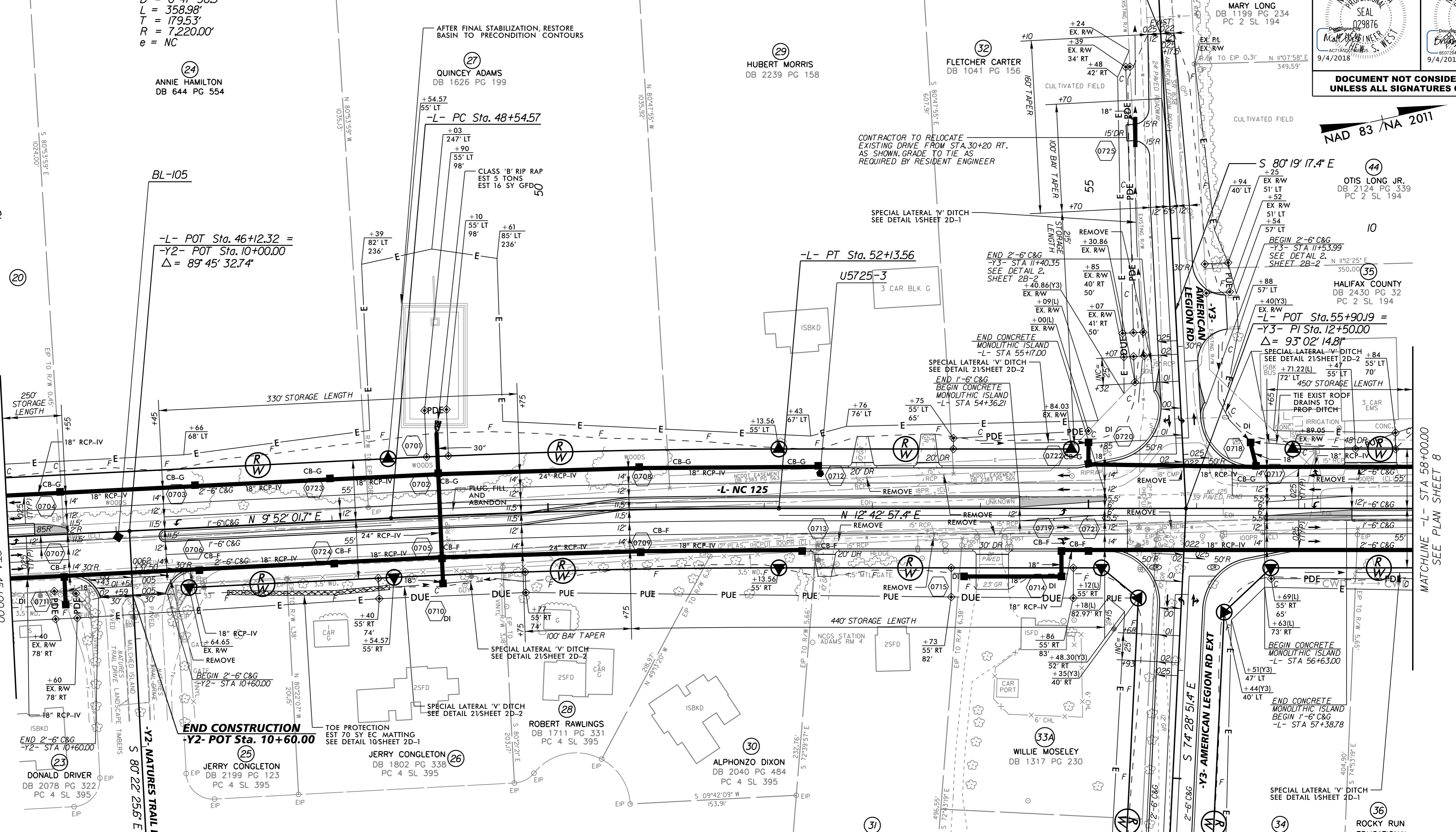
-L- POT Sta. 55+90.19 =
 -Y3- PI Sta. 12+50.00
 $\Delta = 93^{\circ} 02' 14.8''$

-L- POT Sta. 46+12.32 =
 -Y2- POT Sta. 10+00.00
 $\Delta = 89^{\circ} 45' 32.74''$

-L- PT Sta. 52+13.56
 U5725-3
 3 CAR BLK G

MATCHLINE -L- STA 45+00.00
 SEE PLAN SHEET 6

MATCHLINE -L- STA 58+00.00
 SEE PLAN SHEET 8



2017 ADT 2040 ADT	-Y3- AMERICAN LEGIION RD	DHV = 10% DIR = 65% TTST = 1% DUAL = 4%
10400 15000	2900 5100	
NC 125	2000 3000	DHV = 10% DIR = 55% TTST = 1% DUAL = 2%
DHV = 10% DIR = 55% TTST = 1% DUAL = 2%	900 1600	NC 125
	9300 13500	DHV = 10% DIR = 55% TTST = 1% DUAL = 2%
	0 300	
	0 200	
	0 1000	
	-Y3- AMERICAN LEGION RD EXT	DHV = 10% DIR = 55% TTST = 1% DUAL = 2%

NOTE: ALL TEMPORARY SEDIMENT TRAPS SHALL BE
 REMOVED AND REGRADED TO PRECONSTRUCTION
 TOPOGRAPHY PRIOR TO PROJECT COMPLETION.
SEE SHEET NO. 21 FOR -L- PROFILE
SEE SHEET NO. 28 FOR -Y2- PROFILE
SEE SHEET NO. 28 FOR -Y3- PROFILE

REVISIONS