

5/14/19

PROJECT REFERENCE NO. U-5725/R-3822	SHEET NO. 6
ROADWAY DESIGN ENGINEER	HYDRAULICS ENGINEER
DOCUMENT NOT CONSIDERED FINAL UNLESS ALL SIGNATURES COMPLETED	

NAD 83 / NA 2011

ANTHONY DICKENS
DB 644 PG 561

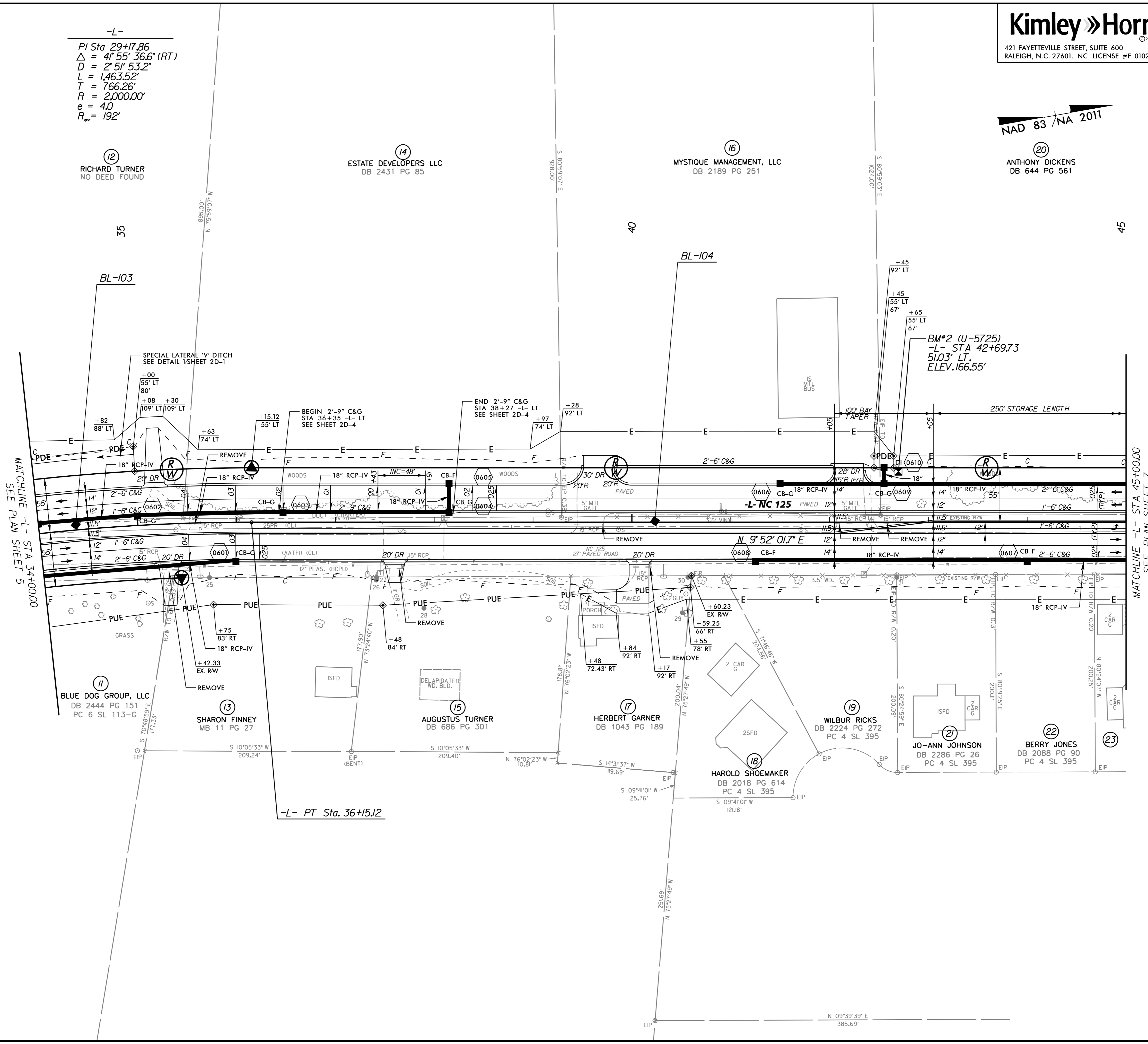
-L-
 PI Sta 29+17.86
 $\Delta = 4^{\circ} 55' 36.6''$ (RT)
 $D = 2^{\circ} 51' 53.2''$
 $L = 1,463.52'$
 $T = 766.26'$
 $R = 2,000.00'$
 $e = 4.0$
 $R_w = 192'$

12 RICHARD TURNER
NO DEED FOUND

14 ESTATE DEVELOPERS LLC
DB 2431 PG 85

16 MYSTIQUE MANAGEMENT, LLC
DB 2189 PG 251

20 ANTHONY DICKENS
DB 644 PG 561



MATCHLINE -L- STA 34+00.00
SEE PLAN SHEET 5

MATCHLINE -L- STA 45+00.00
SEE PLAN SHEET 7

REVISIONS

11 BLUE DOG GROUP, LLC
DB 2444 PG 151
PC 6 SL 113-G

13 SHARON FINNEY
MB 11 PG 27

15 AUGUSTUS TURNER
DB 686 PG 301

17 HERBERT GARNER
DB 1043 PG 189

18 HAROLD SHOEMAKER
DB 2018 PG 614
PC 4 SL 395

19 WILBUR RICKS
DB 2224 PG 272
PC 4 SL 395

21 JO-ANN JOHNSON
DB 2286 PG 26
PC 4 SL 395

22 BERRY JONES
DB 2088 PG 90
PC 4 SL 395

23

-L- PT Sta. 36+15.12

NOTE: ALL TEMPORARY SEDIMENT TRAPS SHALL BE REMOVED AND REGRADED TO PRECONSTRUCTION TOPOGRAPHY PRIOR TO PROJECT COMPLETION.
 SEE SHEET NO. 21 FOR -L- PROFILE

9/4/2018