

5/14/19

Kimley » Horn

421 FAYETTEVILLE STREET, SUITE 600
RALEIGH, N.C. 27601. NC LICENSE #F-0102

PROJECT REFERENCE NO. U-5725/R-3822	SHEET NO. 4
ROADWAY DESIGN ENGINEER	HYDRAULICS ENGINEER
DOCUMENT NOT CONSIDERED FINAL UNLESS ALL SIGNATURES COMPLETED	

-L-

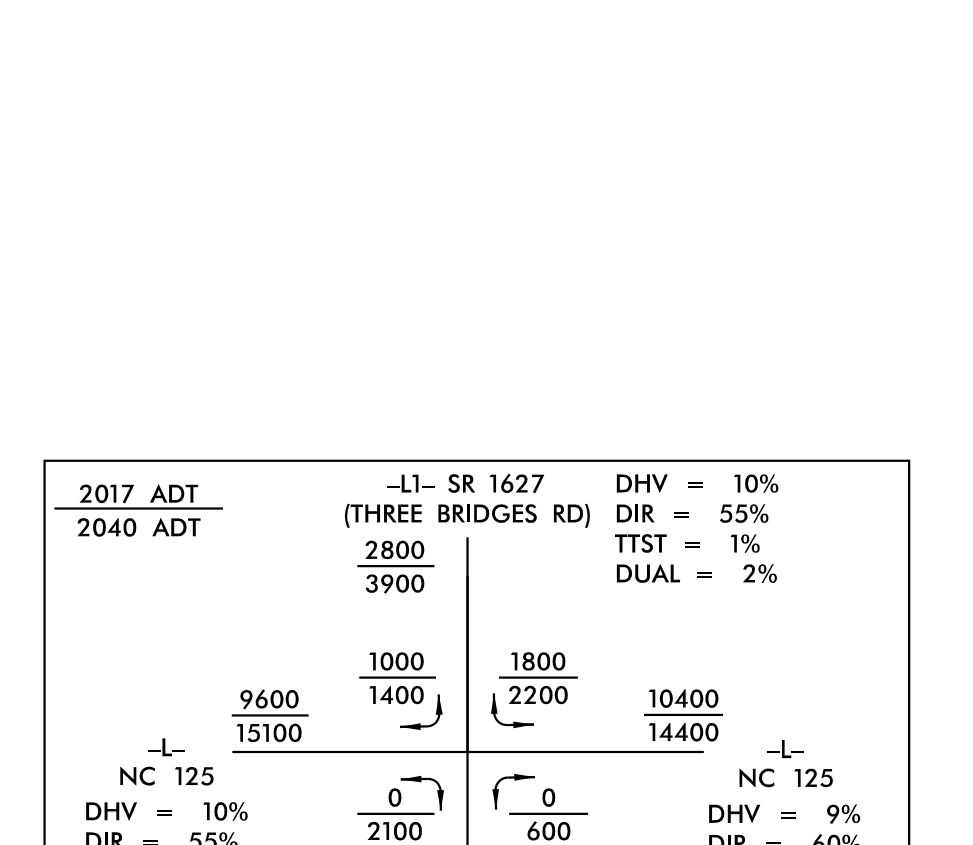
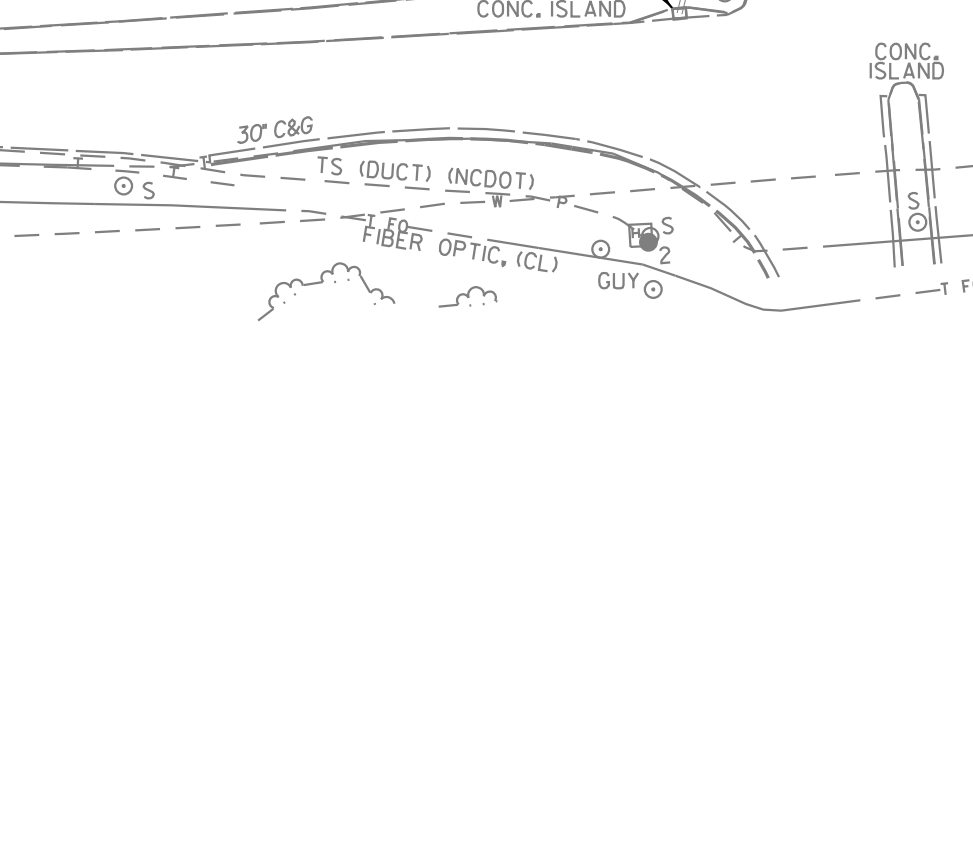
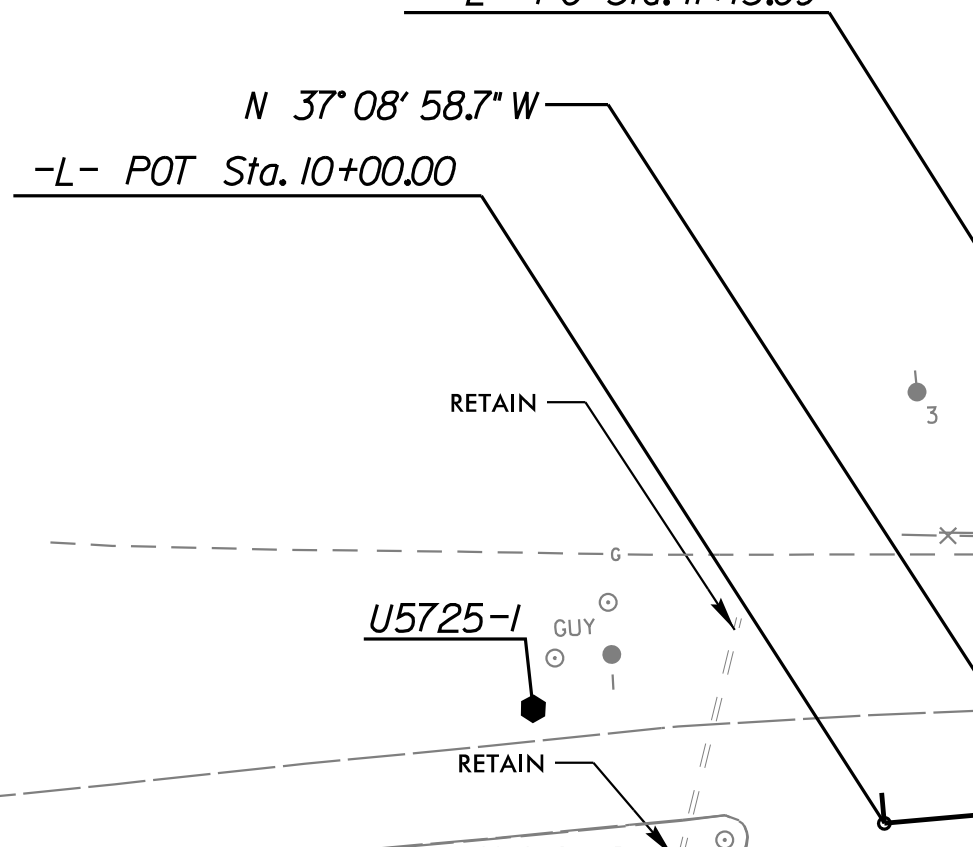
PI Sta 12+33.09 Δ = 5° 05' 23.8" (RT) D = 2' 07' 19.4" L = 239.86' T = 120.01' R = 2,700.00'	PI Sta 29+17.86 Δ = 41° 55' 36.6" (RT) D = 2' 51' 53.2" L = 1,463.52' T = 766.26' R = 2,000.00' e = 4.0 R _{eq} = 192'
---	---

-LI-

PI Sta 25+10.02 Δ = 13° 12' 00.6" (RT) D = 4' 46' 28.7" L = 276.46' T = 138.85' R = 1,200.00' e = 3.2 R _{eq} = 64'	PI Sta 31+76.35 Δ = 32° 06' 43.9" (LT) D = 5' 43' 46.5" L = 560.46' T = 287.81' R = 1,000.00' e = 3.6 R _{eq} = 108'
--	---

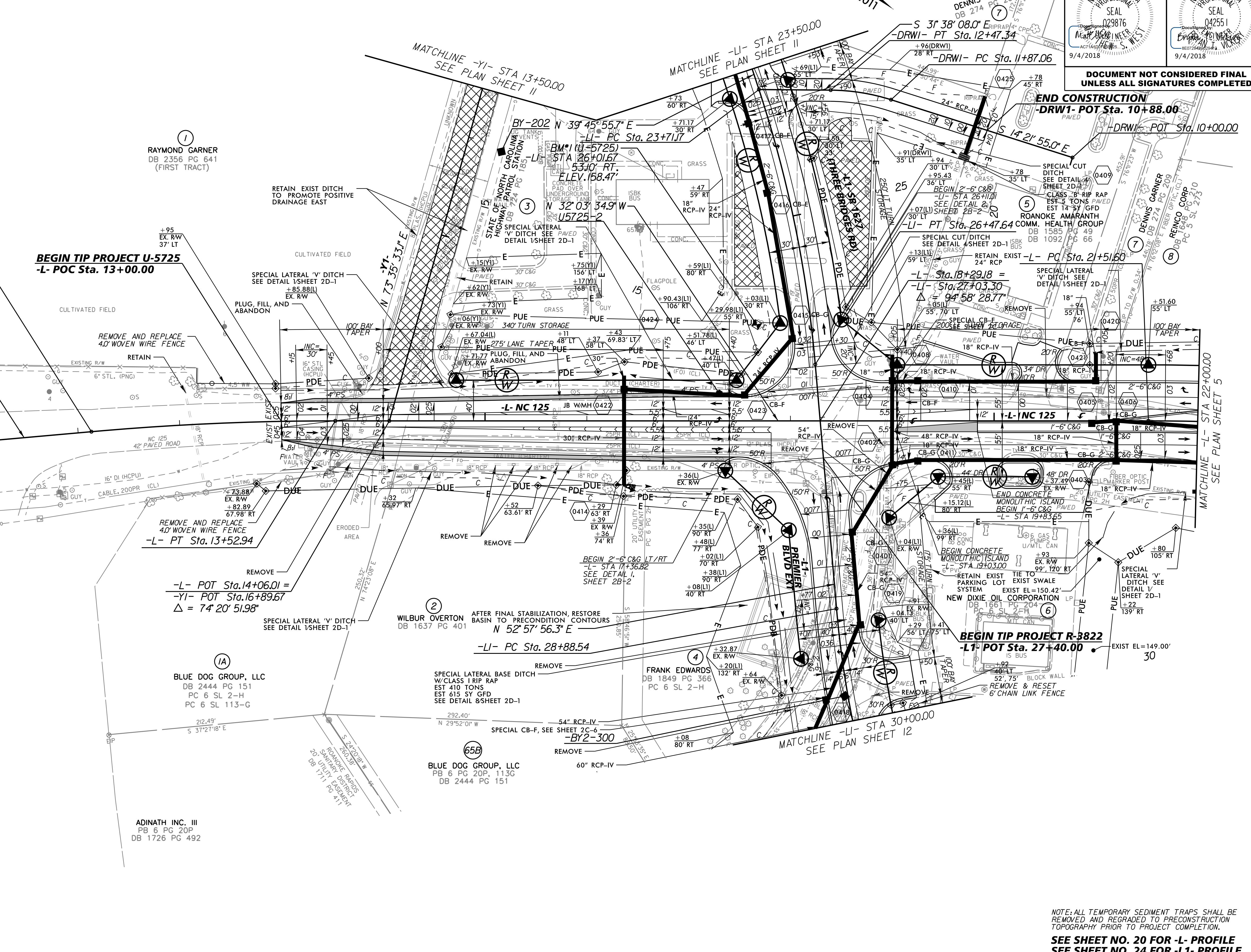
-DRWI-

PI Sta 12+17.43 Δ = 17° 16' 13.0" (LT) D = 28' 38" 52.4" L = 60.28' T = 30.37' R = 200.00'



2017 ADT	-LI- SR 1627 (THREE BRIDGES RD)	DHV = 10%	DIR = 55%	TTST = 1%	DUAL = 2%
2040 ADT	2800				
	3900				
	1000	1800	10400		
	1400	2200	14400		
	15100				
NC 125	0	0	0	0	0
DHV = 10%	2100	600			
DIR = 55%					
TTST = 1%					
DUAL = 2%					
	0	3000			
	-LI- PREMIER BLVD EXT	DHV = 8%	DIR = 60%	TTST = 1%	DUAL = 2%

9/4/2018



NOTE: ALL TEMPORARY SEDIMENT TRAPS SHALL BE REMOVED AND REGRADED TO PRECONSTRUCTION TOPOGRAPHY PRIOR TO PROJECT COMPLETION.

SEE SHEET NO. 20 FOR -L- PROFILE
SEE SHEET NO. 24 FOR -LI- PROFILE
SEE SHEET NO. 27 FOR -YI- PROFILE
SEE SHEET NO. 30 FOR -DRWI- PROFILE