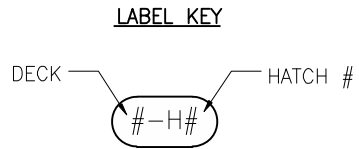


6
 CONFIDENTIAL AND PROPRIETARY PROPERTY OF
EBDG - NC, PLLC
 MAY NOT BE USED FOR CONSTRUCTION OR PROVIDED TO
 ANY THIRD PARTIES WITHOUT PRIOR WRITTEN CONSENT.
 © 2018 ELLIOTT BAY DESIGN GROUP.

HATCH LIST						
NO.	DECK	SPACE	FR-END/P-S	SIZE	COAMING	REMARKS
1-H1	HOLD	POTABLE WATER TANK (P)	22-B/P	15 x 23	2.5	RAISED, BOLTED, WATER TIGHT
1-H2	HOLD	FUEL OIL TANK (A)	18-A/P	15 x 23	2.5	RAISED, BOLTED, OIL TIGHT
1-H3	HOLD	FUEL OIL TANK (B)	18-B/P	15 x 23	2.5	RAISED, BOLTED, OIL TIGHT
2-H1	MAIN	LAZ "A"	40.5-A/S	15 x 23	0	FLUSH, WATER TIGHT, BOLTED
2-H2	MAIN	THRUSTER ACCESS	38-A/S	72 x 84	0	EQUIPMENT REMOVAL CAR DECK PLATE, FLUSH, SCREWED, WATER TIGHT, REF 3
2-H3	MAIN	THRUSTER ACCESS	38-A/P	72 x 84	0	EQUIPMENT REMOVAL CAR DECK PLATE, FLUSH, SCREWED, WATER TIGHT, REF 3
2-H4	MAIN	BALLAST TANK (S)	29-A/S	15 x 23	0	FLUSH, WATER TIGHT, BOLTED
2-H5	MAIN	BALLAST TANK (P)	29-A/P	15 x 23	0	FLUSH, WATER TIGHT, BOLTED
2-H6	MAIN	THRUSTER ROOM "A" ESCAPE	33-A/S	22 DIA	0	FLUSH, HINGED, WATER TIGHT, QUICK ACTING, SPRING ASSIST
2-H7	MAIN	VOID "A" ESCAPE	23-A/S	22 DIA	0	FLUSH, HINGED, WATER TIGHT, QUICK ACTING, SPRING ASSIST
2-H8	MAIN	GENERATOR ACCESS	6-A/P	64 x 88	0	EQUIPMENT REMOVAL CAR DECK PLATE, A-60, FLUSH, SCREWED, WATER TIGHT, REF 3
2-H9	MAIN	GENERATOR ACCESS	2-A/P	64 x 88	0	EQUIPMENT REMOVAL CAR DECK PLATE, A-60, FLUSH, SCREWED, WATER TIGHT, REF 3
2-H10	MAIN	GENERATOR ACCESS	2-B/P	64 x 88	0	EQUIPMENT REMOVAL CAR DECK PLATE, A-60, FLUSH, SCREWED, WATER TIGHT, REF 3
2-H11	MAIN	ENG. RM. MACHINERY ACCESS	10-A/S	52 x 88	0	EQUIPMENT REMOVAL CAR DECK PLATE, A-60, FLUSH, SCREWED, WATER TIGHT, REF 3
2-H12	MAIN	EXHAUST ACCESS	0/S	72 x 84	0	STUD, X2 HANDLE, EQUIPMENT REMOVAL PLATE, WATER TIGHT
2-H13	MAIN	BALLAST TANK (S)	29-B/S	15 x 23	0	FLUSH, WATER TIGHT, BOLTED
2-H14	MAIN	BALLAST TANK (P)	29-B/P	15 x 23	0	FLUSH, WATER TIGHT, BOLTED
2-H15	MAIN	VOID "B" ESCAPE	23-B/S	22 DIA	0	FLUSH, HINGED, WATER TIGHT, QUICK ACTING, SPRING ASSIST
2-H16	MAIN	THRUSTER ROOM "B" ESCAPE	33-B/S	22 DIA	0	FLUSH, HINGED, WATER TIGHT, QUICK ACTING, SPRING ASSIST
2-H17	MAIN	THRUSTER ACCESS	38-B/S	72 x 84	0	EQUIPMENT REMOVAL CAR DECK PLATE, FLUSH, SCREWED, WATER TIGHT, REF 3
2-H18	MAIN	THRUSTER ACCESS	38-B/P	72 x 84	0	EQUIPMENT REMOVAL CAR DECK PLATE, FLUSH, SCREWED, WATER TIGHT, REF 3
2-H19	MAIN	LAZ "B"	40.5-B/S	15 x 23	0	FLUSH, WATER TIGHT, BOLTED
2-H20	MAIN	ANCHOR CHAIN STORAGE	34-A/S	15 x 23	0	STUD, X2 HANDLE, EQUIPMENT REMOVAL PLATE, WATER TIGHT
2-H21	MAIN	FUEL OIL TANK (A) ACCESS	18-A/P	15 x 23	0	FLUSH, WATER TIGHT, BOLTED
2-H22	MAIN	FUEL OIL TANK (B) ACCESS	18-B/P	15 x 23	0	FLUSH, WATER TIGHT, BOLTED
2-H23	MAIN	MSD ACCESS	14.5-A/S	15 x 23	0	FLUSH, WATER TIGHT, BOLTED
2-H24	MAIN	VOID "A" ACCESS	23-A/P	40 x 40	0	EQUIPMENT REMOVAL CAR DECK PLATE, FLUSH, SCREWED, WATER TIGHT, REF 3
2-H25	MAIN	SWBD ROOM ACCESS	9-B/S	40 x 40	0	EQUIPMENT REMOVAL CAR DECK PLATE, FLUSH, SCREWED, WATER TIGHT, REF 3
2-H26	MAIN	VOID "B" ACCESS	21-B/S	40 x 40	0	EQUIPMENT REMOVAL CAR DECK PLATE, FLUSH, SCREWED, WATER TIGHT, REF 3
3-H1	01 DECK	ELECTRICAL CHASE	5-B/S	24 x 24	0	EQUIPMENT REMOVAL PLATE, FLUSH, SCREWED



1

REVISION HISTORY					
REV	ZONE	DESCRIPTION	DWN	DATE	APVD

GENERAL NOTES

- VESSEL TO BE CONSTRUCTED IN ACCORDANCE WITH 46 CFR SUBCHAPTER H REGULATIONS.
- FRAME SPACING IS 24" UNLESS NOTED OTHERWISE.
- ALL HATCHES ARE TO BE GASKETED, WATERTIGHT. FLUSH HATCHES ON CAR DECK ARE TO USE ADDITIONAL SEALING COMPOUND TO ENSURE WATERTIGHT FIT.
- SEE REF 3 FOR B.E.R.P. HATCH STRUCTURE.
- ESCAPE HATCHES SHALL BE PAINTED IN A BRIGHT COLOR CONTRASTING THE DECK.

VESSEL PARTICULARS

LENGTH OVERALL:	183'-7"
LENGTH DESIGN LOAD WATERLINE:	178'-3/8"
BEAM, MOLDED:	46'-0"
BEAM OVER GUARDS:	46'-10"
DEPTH AT SIDE:	10'-6"
DRAFT AT DLWL:	4'-6"
FREEBOARD AT SIDE:	6'-0"
TOTAL PASSENGER CAPACITY:	300 MAX.
VEHICLE CAPACITY:	40 SV

- REFERENCES
- 18026-200-832-1 TECHNICAL SPECIFICATION
 - 18026-200-101-1 PROFILES AND DECK ARRANGEMENTS
 - 18026-200-130-2 MAIN DECK



Elliott Bay Design Group
 North Carolina, PLLC

CLIENT: NORTH CAROLINA D.O.T.
 RALEIGH, NORTH CAROLINA

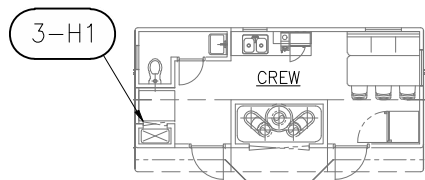
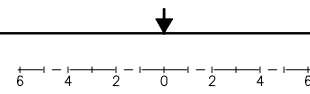
PROJECT: DOUBLE-ENDED AZIMUTH DRIVE FERRY



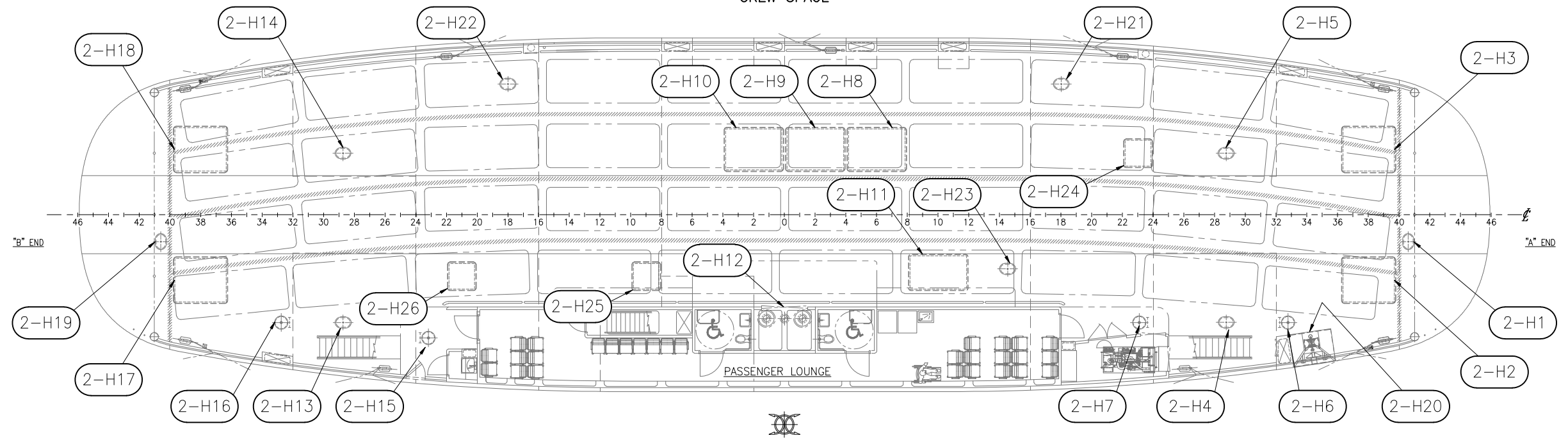
HATCH SCHEDULE

SIZE	D	DWG NO.	18026-200-624-3	REV	—
SCALE	NONE	FILE NAME	18026-200-624-3-	SHEET	1 OF 2
DWN	JEH	MOD	MWR	CKD	NUJ
APVD	KAJ	APVD DATE	8/3/2018		

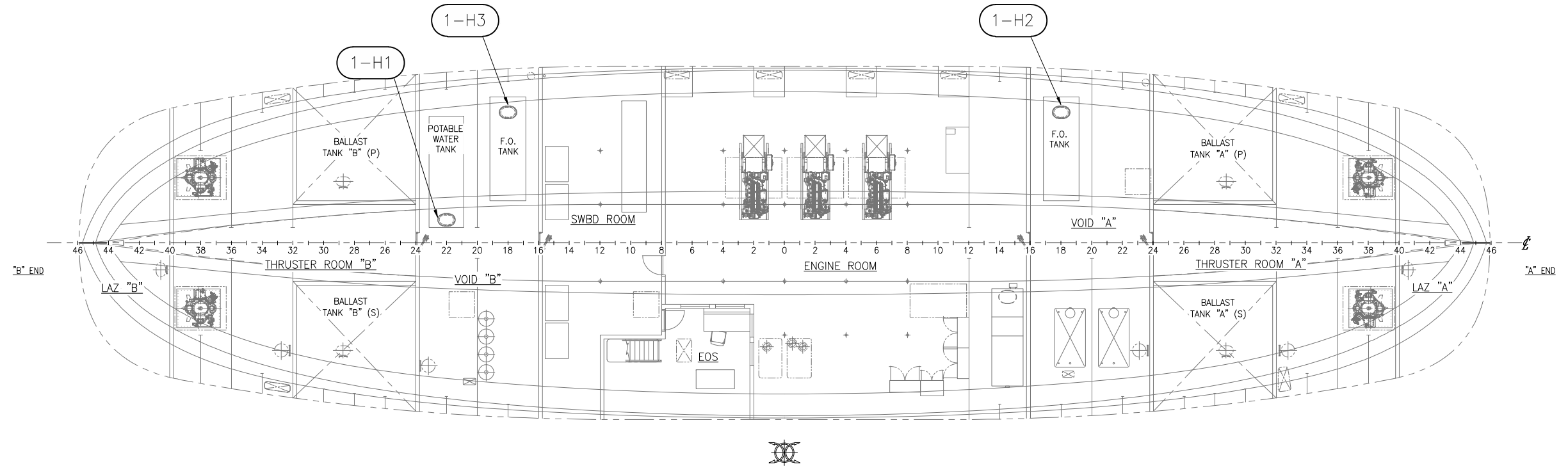
8/3/2018 2:31:46 PM



01 DECK PLAN
CREW SPACE



MAIN DECK PLAN



HOLD PLAN



SIZE	D	DWG NO.	18026-200-624-3-	REV	-
SCALE	1/8"=1'-0"	FILE NAME	18026-200-624-3-	SHEET	2 OF 2

8/3/2018 2:31:50 PM