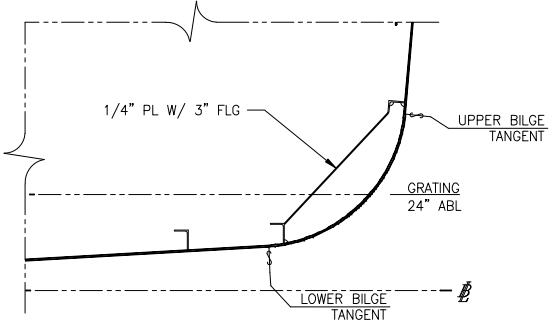
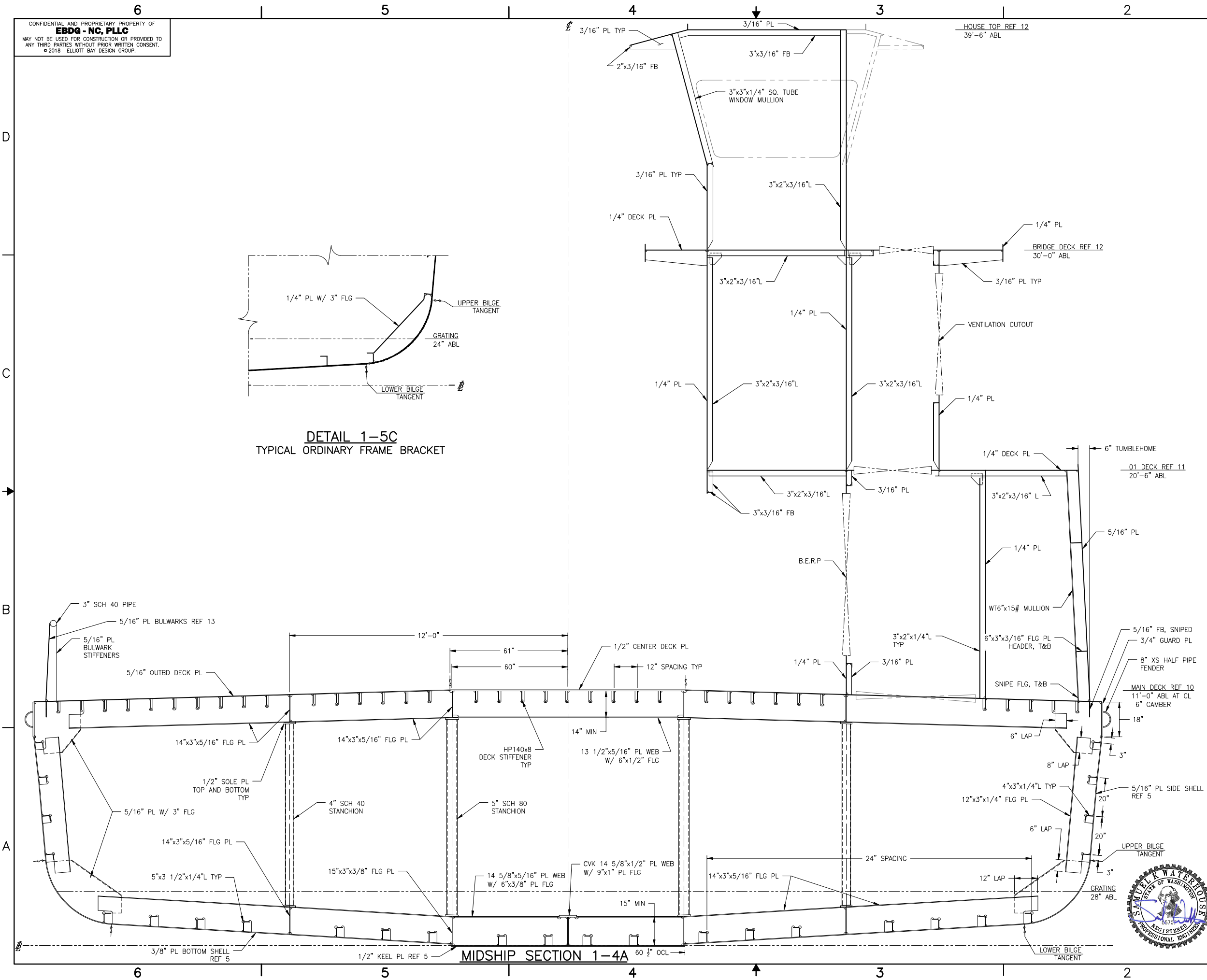


CONFIDENTIAL AND PROPRIETARY PROPERTY OF
EBDG - NC, PLLC
 MAY NOT BE USED FOR CONSTRUCTION OR PROVIDED TO
 ANY THIRD PARTIES WITHOUT PRIOR WRITTEN CONSENT.
 © 2018 ELLIOTT BAY DESIGN GROUP.



DETAIL 1-5C
 TYPICAL ORDINARY FRAME BRACKET

REVISION HISTORY

REV	ZONE	DESCRIPTION	DWN	DATE	APVD

GENERAL NOTES

1. VESSEL TO BE CONSTRUCTED IN ACCORDANCE WITH 46 CFR SUBCHAPTER H REGULATIONS.
2. FRAME SPACING IS 24".
3. MAIN DECK SHALL BE CONSTRUCTED SUCH THAT THE TOP SIDE OF THE DECK PLATE IS FLUSH. THE 1/2" DECK PLATE WILL THEN BE 3/16" INSIDE THE "MOLDED LINE".

REFERENCES

1. 18026-200-832-1 TECHNICAL SPECIFICATION
2. 18026-200-061-1 SCANTLING CALCULATIONS
3. 18026-200-100-1 LINES PLAN
4. 18026-200-101-1 PROFILES AND DECK ARRANGEMENTS
5. 18026-200-110-1 BOTTOM AND SIDE SHELL
6. 18026-200-120-1 MIDSHIP SECTION
7. 18026-200-120-3 HULL TRANSVERSE BULKHEADS
8. 18026-200-120-4 HULL TRANSVERSE FRAMES
9. 18026-200-120-5 HULL LONGITUDINAL BULKHEADS AND GIRDERS
10. 18026-200-130-2 MAIN DECK
11. 18026-200-150-1 SUPERSTRUCTURE MAIN DECK TO 01 DECK
12. 18026-200-150-2 SUPERSTRUCTURE 01 DECK TO PILOT HOUSE TOP
13. 18026-200-150-3 MAIN DECK BULKHEADS



Elliott Bay Design Group
 North Carolina, PLLC

CLIENT: **NORTH CAROLINA D.O.T.**
 RALEIGH, NORTH CAROLINA
 PROJECT: **DOUBLE-ENDED AZIMUTH DRIVE FERRY**

MIDSHIP SECTION

SIZE: D	DWG NO.: 18026-200-120-1	REV: -
SCALE: 1/2"=1'-0"	FILE NAME: 18026-200-120-1-	SHEET: 1 OF 1
DWN: JCG	MOD: SKW	APVD: SKW
		APVD DATE: 7/26/2018



7/30/2018 3:59:42 PM