

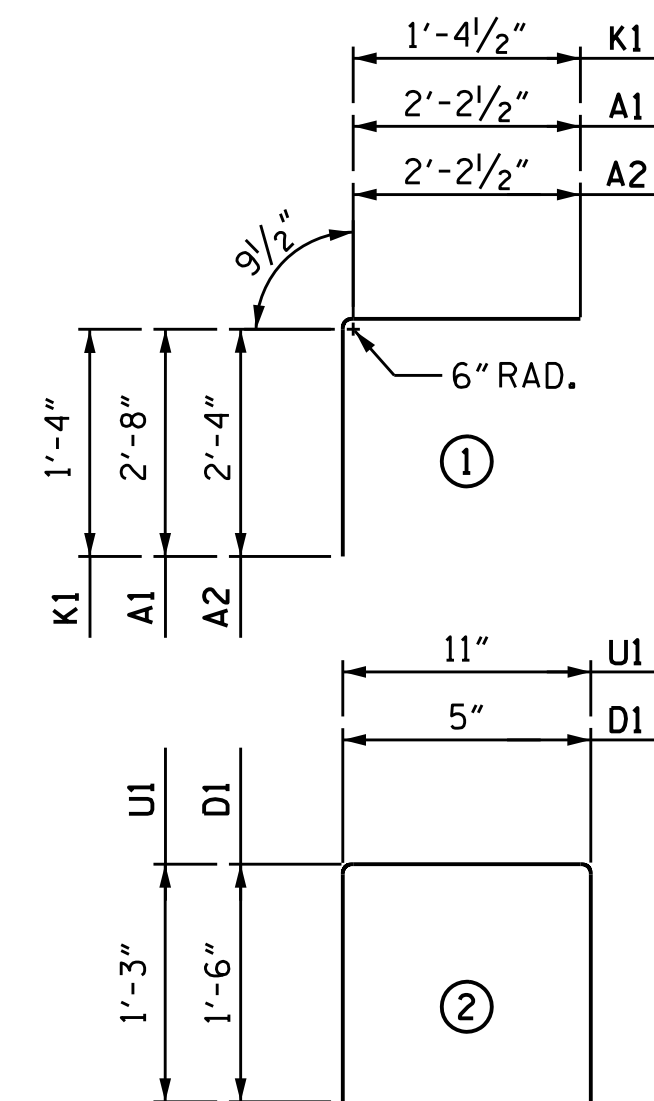
-- BAR SCHEDULE PHASE 1 --

BILL OF MATERIALS OUTLET						BILL OF MATERIALS INLET (CONT.)						
PHASE 1						PHASE 1						
BAR	NO.	SIZE	TYPE	LENGTH	WEIGHT	BAR	NO.	SIZE	TYPE	LENGTH	WEIGHT	
A200	52	#4	STR	25'-10"	898	A236	1	#4	STR	23'-11"	16	
A400	21	#6	STR	26'-8"	842	A237	1	#4	STR	23'-3"	16	
C1	123	#4	STR	17'-0"	1397	A238	1	#4	STR	22'-5"	15	
A1	21	#6	1	5'-8"	179	A239	1	#4	STR	21'-8"	15	
A2	21	#6	1	5'-4"	169	A240	1	#4	STR	20'-11"	14	
B1	30	#4	STR	12'-6"	251	A241	1	#4	STR	20'-2"	14	
B2	21	#4	STR	11'-0"	155	A242	1	#4	STR	19'-4"	13	
B3	76	#4	STR	13'-5"	682	A243	1	#4	STR	18'-7"	13	
S1	2	#6	STR	26'-8"	81	A244	1	#4	STR	17'-10"	12	
S2	6	#6	STR	26'-8"	241	A245	1	#4	STR	17'-0"	12	
K1	31	#4	1	3'-6"	73	A246	1	#4	STR	16'-3"	11	
REINFORCING STEEL					LBS.	4968	A247	1	#4	STR	15'-7"	11
BILL OF MATERIALS INLET						BILL OF MATERIALS INLET						
PHASE 1						PHASE 1						
BAR	NO.	SIZE	TYPE	LENGTH	WEIGHT	BAR	NO.	SIZE	TYPE	LENGTH	WEIGHT	
A200	1	#4	STR	2'-2"	2	A258	1	#4	STR	7'-0"	5	
A201	1	#4	STR	2'-11"	2	A259	1	#4	STR	6'-4"	5	
A202	1	#4	STR	3'-9"	3	A260	1	#4	STR	5'-7"	4	
A203	1	#4	STR	4'-6"	4	A261	1	#4	STR	4'-10"	4	
A204	1	#4	STR	5'-3"	4	A262	1	#4	STR	4'-0"	3	
A205	1	#4	STR	6'-0"	5	A400	1	#6	STR	3'-4"	6	
A206	1	#4	STR	6'-9"	5	A401	1	#6	STR	4'-10"	8	
A207	1	#4	STR	7'-6"	6	A402	1	#6	STR	6'-5"	10	
A208	1	#4	STR	8'-4"	6	A403	1	#6	STR	7'-11"	12	
A209	1	#4	STR	9'-1"	7	A404	1	#6	STR	9'-5"	15	
A210	1	#4	STR	9'-10"	7	A405	1	#6	STR	11'-0"	17	
A211	1	#4	STR	10'-7"	8	A406	1	#6	STR	12'-6"	19	
A212	1	#4	STR	11'-4"	8	A407	1	#6	STR	14'-0"	22	
A213	1	#4	STR	12'-2"	9	A408	1	#6	STR	15'-7"	24	
A214	1	#4	STR	12'-11"	9	A409	1	#6	STR	17'-1"	26	
A215	1	#4	STR	13'-8"	10	A410	1	#6	STR	18'-8"	29	
A216	1	#4	STR	14'-5"	10	A411	1	#6	STR	20'-2"	31	
A217	1	#4	STR	15'-2"	11	A412	1	#6	STR	21'-8"	33	
A218	1	#4	STR	15'-11"	11	A413	1	#6	STR	23'-3"	35	
A219	1	#4	STR	16'-9"	12	A414	1	#6	STR	24'-9"	38	
A220	1	#4	STR	17'-6"	12	A415	1	#6	STR	26'-3"	40	
A221	1	#4	STR	18'-3"	13	A416	1	#6	STR	27'-10"	42	
A222	1	#4	STR	19'-0"	13	A417	1	#6	STR	29'-4"	45	
A223	1	#4	STR	19'-9"	14	A418	1	#6	STR	30'-8"	47	
A224	1	#4	STR	20'-7"	14	A419	1	#6	STR	25'-2"	38	
A225	1	#4	STR	21'-4"	15	A420	1	#6	STR	23'-8"	36	
A226	1	#4	STR	22'-1"	15	A421	1	#6	STR	22'-1"	34	
A227	1	#4	STR	22'-10"	16	A422	1	#6	STR	20'-7"	31	
A228	1	#4	STR	23'-7"	16	A423	1	#6	STR	19'-0"	29	
A229	1	#4	STR	24'-5"	17	A424	1	#6	STR	17'-6"	27	
A230	1	#4	STR	25'-2"	17	A425	1	#6	STR	16'-0"	25	
A231	1	#4	STR	25'-11"	18	A426	1	#6	STR	14'-5"	22	
A232	1	#4	STR	26'-8"	18	A427	1	#6	STR	12'-11"	20	
A233	5	#4	STR	25'-10"	87	A428	1	#6	STR	11'-5"	18	
A234	1	#4	STR	25'-6"	18	A429	1	#6	STR	9'-10"	15	
A235	1	#4	STR	24'-9"	17	A430	1	#6	STR	8'-4"	13	
REINFORCING STEEL					LBS.	4968	A431	1	#6	STR	6'-10"	11
REINFORCING STEEL					LBS.	4968	A432	1	#6	STR	5'-3"	8

-- BAR SCHEDULE PHASE 2 --

BILL OF MATERIALS OUTLET						BILL OF MATERIALS INLET (CONT.)							
PHASE 2						PHASE 2							
BAR	NO.	SIZE	TYPE	LENGTH	WEIGHT	BAR	NO.	SIZE	TYPE	LENGTH	WEIGHT		
A200	52	#4	STR	19'-2"	666	A216	1	#4	STR	16'-7"	12		
A400	21	#6	STR	19'-2"	605	A217	1	#4	STR	17'-4"	12		
C1	92	#4	STR	17'-0"	1045	A218	1	#4	STR	18'-1"	13		
A1	21	#6	1	5'-8"	179	A219	1	#4	STR	18'-10"	13		
A2	21	#6	1	5'-4"	169	A220	13	#4	STR	19'-2"	167		
B1	30	#4	STR	12'-6"	251	A221	1	#4	STR	20'-2"	14		
B2	21	#4	STR	11'-0"	155	A222	1	#4	STR	19'-9"	14		
B3	38	#4	STR	13'-5"	341	A223	1	#4	STR	19'-0"	13		
S1	2	#6	STR	17'-9"	54	A224	1	#4	STR	18'-3"	13		
S2	6	#6	STR	19'-0"	172	A225	1	#4	STR	17'-6"	12		
K1	19	#4	1	3'-6"	45	A226	1	#4	STR	16'-8"	12		
REINFORCING STEEL					LBS.	3682	A227	1	#4	STR	15'-11"	11	
REINFORCING STEEL					LBS.	3682	A228	1	#4	STR	15'-2"	11	
BILL OF MATERIALS INLET						BILL OF MATERIALS INLET							
PHASE 2						PHASE 2							
BAR	NO.	SIZE	TYPE	LENGTH	WEIGHT	BAR	NO.	SIZE	TYPE	LENGTH	WEIGHT		
A200	1	#4	STR	4'-4"	3	A229	1	#4	STR	14'-5"	10		
A201	1	#4	STR	5'-1"	4	A230	1	#4	STR	13'-8"	10		
A202	1	#4	STR	5'-10"	4	A231	1	#4	STR	12'-11"	9		
A203	1	#4	STR	6'-7"	5	A232	1	#4	STR	12'-1"	9		
A204	1	#4	STR	7'-5"	5	A233	1	#4	STR	11'-4"	8		
A205	1	#4	STR	8'-2"	6	A234	1	#4	STR	10'-7"	8		
A206	1	#4	STR	8'-11"	6	A235	1	#4	STR	9'-10"	7		
A207	1	#4	STR	9'-8"	7	A236	1	#4	STR	9'-1"	7		
A208	1	#4	STR	10'-5"	7	A237	1	#4	STR	8'-3"	6		
A209	1	#4	STR	11'-3"	8	A238	1	#4	STR	8'-3"	6		
A210	1	#4	STR	12'-0"	9	A239	1	#4	STR	7'-6"	6		
A211	1	#4	STR	12'-9"	9	A240	1	#4	STR	6'-9"	5		
A212	1	#4	STR	13'-6"	10	A241	1	#4	STR	6'-0"	5		
A213	1	#4	STR	14'-3"	10	A242	1	#4	STR	5'-3"	4		
A214	1	#4	STR	15'-1"	11	A243	1	#4	STR	4'-6"	4		
A215	1	#4	STR	15'-10"	11	A244	1	#4	STR	3'-8"	3		
REINFORCING STEEL					LBS.	5000	A245	1	#4	STR	2'-2"	2	
REINFORCING STEEL					LBS.	5000	A400	1	#6	STR	8'-6"	13	
REINFORCING STEEL					LBS.	5000	A401	1	#6	STR	10'-1"	16	
REINFORCING STEEL					LBS.	5000	A402	1	#6	STR	11'-7"	18	
REINFORCING STEEL					LBS.	5000	A403	1	#6	STR	13'-1"	20	
REINFORCING STEEL					LBS.	5000	A404	1	#6	STR	14'-8"	23	
REINFORCING STEEL					LBS.	5000	A405	1	#6	STR	16'-2"	25	
REINFORCING STEEL					LBS.	5000	A406	1	#6	STR	17'-9"	27	
REINFORCING STEEL					LBS.	5000	A407	7	#6	STR	19'-2"	202	
REINFORCING STEEL					LBS.	5000	A408	1	#6	STR	20'-2"	31	
REINFORCING STEEL					LBS.	5000	A409	1	#6	STR	18'-8"	29	
REINFORCING STEEL					LBS.	5000	A410	1	#6	STR	17'-1"	26	
REINFORCING STEEL					LBS.	5000	A411	1	#6	STR	15'-7"	24	
REINFORCING STEEL					LBS.	5000	A412	1	#6	STR	14'-0"	22	
REINFORCING STEEL					LBS.	5000	A413	1	#6	STR	12'-6"	19	
REINFORCING STEEL					LBS.	5000	A414	1	#6	STR	11'-0"	17	
REINFORCING STEEL					LBS.	5000	A415	1	#6	STR	9'-5"	15	
REINFORCING STEEL					LBS.	5000	A416	1	#6	STR	7'-11"	12	
REINFORCING STEEL					LBS.	5000	A417	1	#6	STR	6'-5"	10	
REINFORCING STEEL					LBS.	5000	A418	1	#6	STR	4'-10"	8	
REINFORCING STEEL					LBS.	5000	A419	1	#6	STR	3'-4"	6	
REINFORCING STEEL					LBS.	5000	S1	2	#6	STR	21'-9"	66	
REINFORCING STEEL					LBS.	5000	S2	6	#6	STR	21'-9"	197	
REINFORCING STEEL					LBS.	5000	K1	23	#4	1	3'-6"	54	
REINFORCING STEEL					LBS.	5000	C1	92	#4	STR	16'-10"	1035	
REINFORCING STEEL					LBS.	5000	A1	21	#6	1	5'-8"	179	
REINFORCING STEEL					LBS.	5000	A2	21	#6	1	5'-4"	169	
REINFORCING STEEL					LBS.	5000	B1	30	#4	STR	12'-6"	251	
REINFORCING STEEL					LBS.	5000	B2	21	#4	STR	11'-8"	164	
REINFORCING STEEL					LBS.	5000	B3	92	#4	STR	13'-5"	825	
REINFORCING STEEL					LBS.	5000	B4	2	#4	STR	11'-3"	16	
REINFORCING STEEL					LBS.	5000	REINFORCING STEEL					LBS.	3619

BAR TYPES



ALL BAR DIMENSIONS ARE OUT TO OUT

PROJECT NO. U-4405
CUMBERLAND COUNTY
 STATION: 137+99.59 -L-

SHEET 15 OF 18



Designed by:
 Jacob H. Duke
 6/13/2018 9:09:59 AM PDT

STATE OF NORTH CAROLINA
 DEPARTMENT OF TRANSPORTATION
 RALEIGH

CULVERT EXTENSION
 QUADRUPLE 10 FT. X 12 FT.
 CONCRETE BOX CULVERT

BILL OF MATERIALS

REVISIONS						SHEET NO.
NO.	BY:	DATE:	NO.	BY:	DATE:	C1-15
1			3			TOTAL SHEETS
2			4			18

DOCUMENT NOT CONSIDERED FINAL UNLESS ALL SIGNATURES COMPLETED

KCA 4800 SIX FORKS ROAD SUITE 120
 KISINGER CAMPO & ASSOCIATES RALEIGH, NC 27609
 (919) 882-7839

DRAWN BY : DIEGO A. AGUIRRE DATE : 5-18-18
 CHECKED BY : JACOB H. DUKE DATE : 5-22-18
 DESIGN ENGINEER OF RECORD : JACOB H. DUKE DATE : 5-25-18