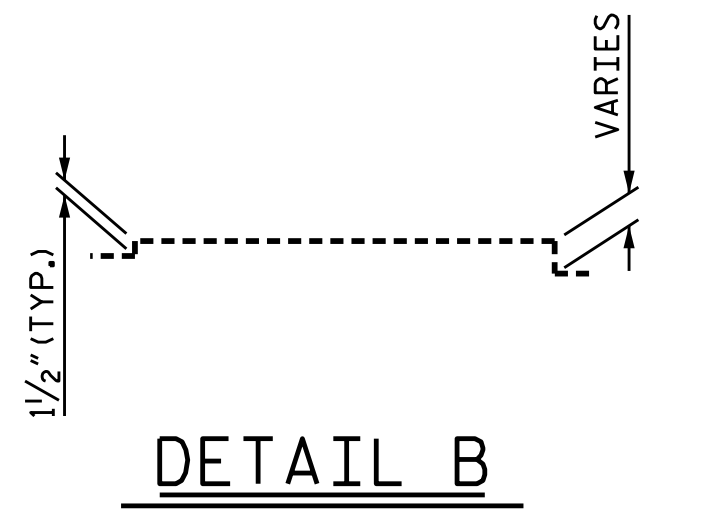


PLAN

NOTES

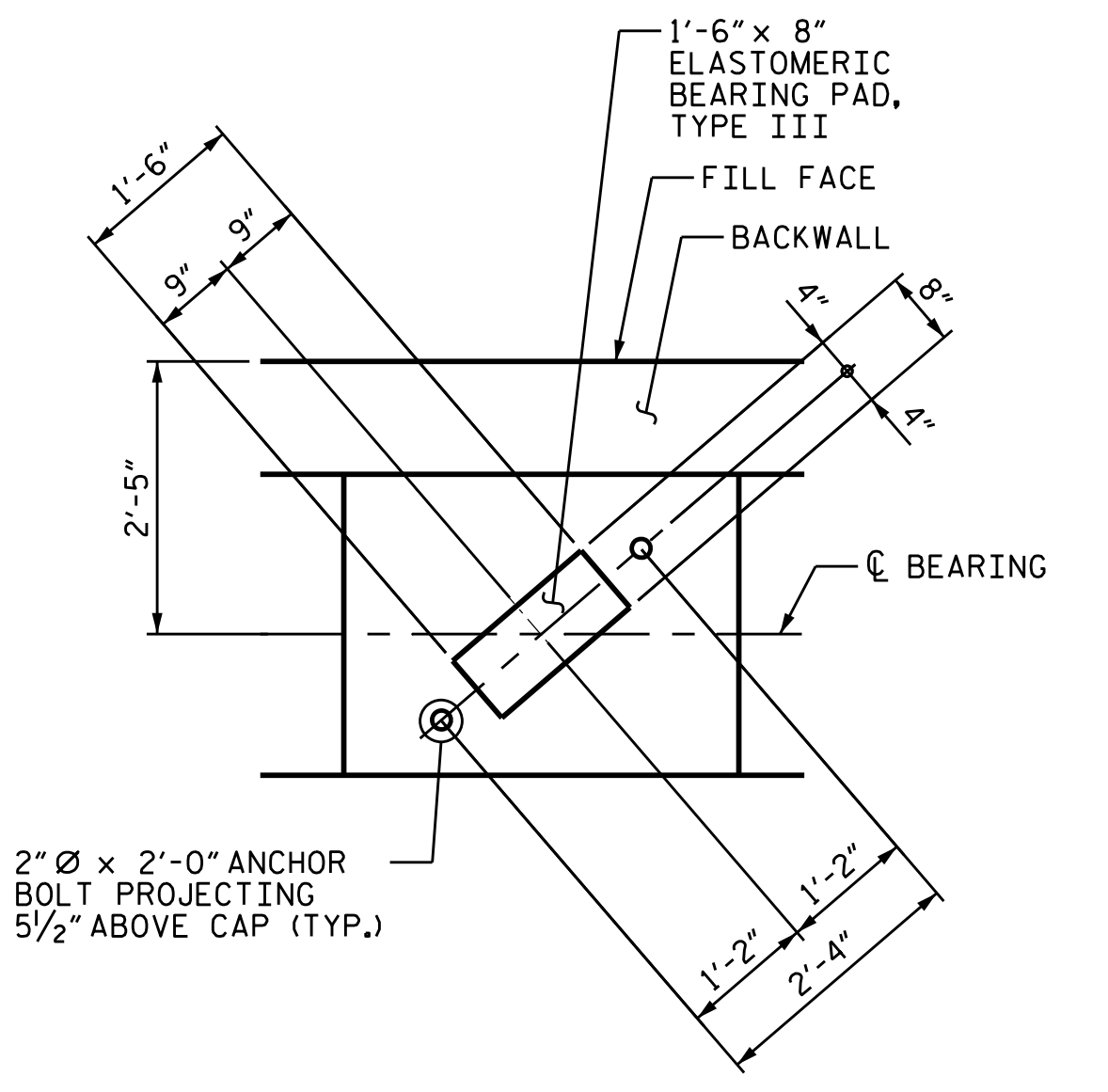
STIRRUPS IN CAP MAY BE SHIFTED AS NECESSARY TO CLEAR ANCHOR BOLTS.
 BACKWALL SHALL BE PLACED BEFORE APPLYING THE EPOXY PROTECTIVE COATING.
 THE TOP SURFACE AREAS OF THE END BENT CAP SHALL BE CURED IN ACCORDANCE WITH THE STANDARD SPECIFICATIONS EXCEPT THE MEMBRANE CURING COMPOUND METHOD SHALL NOT BE USED.
 THE TOP SURFACE OF THE CAP EXCEPT THE BRIDGE SEAT BUILDUPS SHALL BE SLOPED TRANSVERSELY FROM THE FILL FACE TO THE BACK FACE AT THE RATE OF 2%.



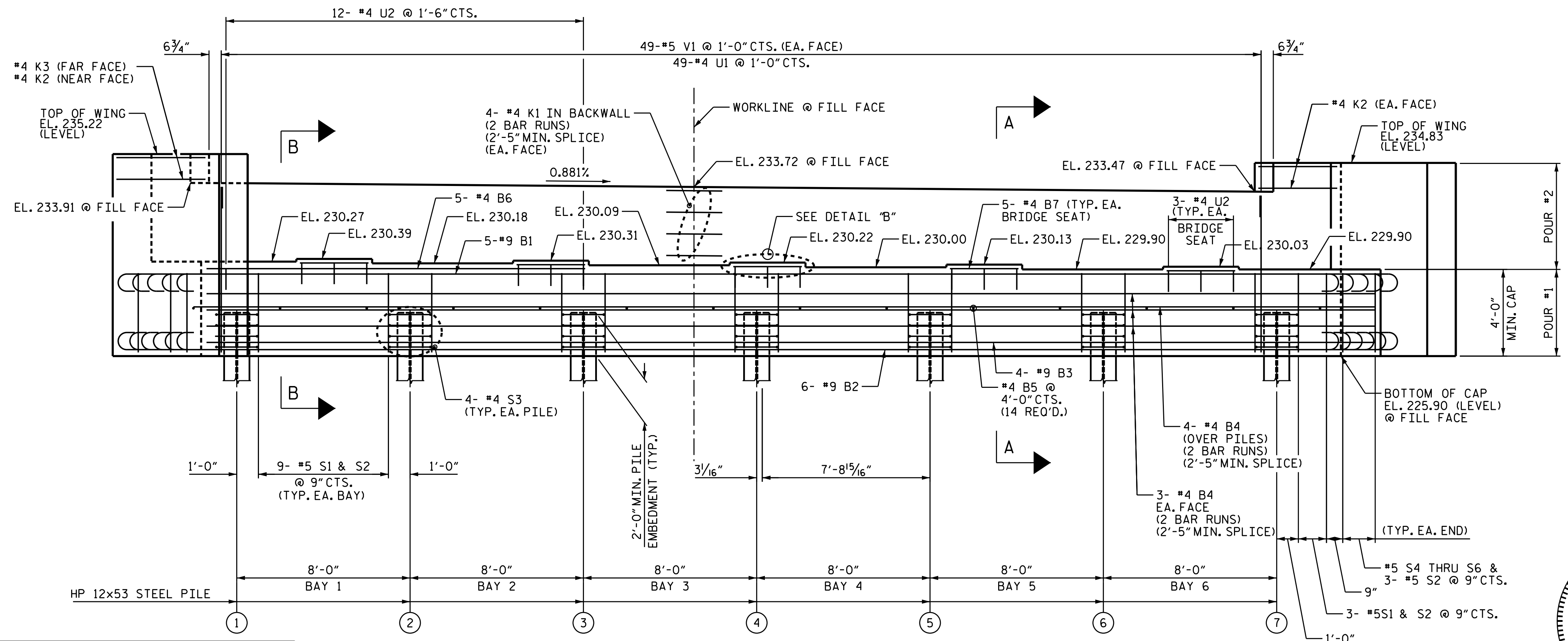
DETAIL B

TOP OF PILE ELEVATIONS

PILE No.	EL.
P1 - P7	227.90

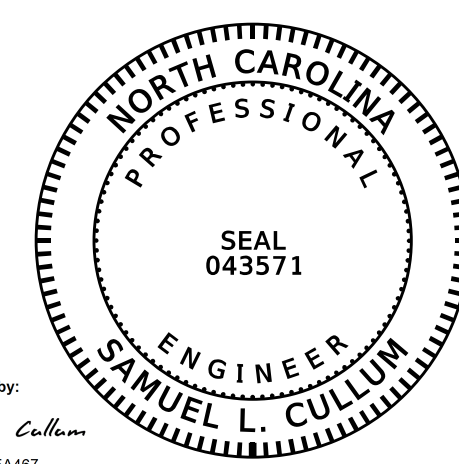


DETAIL A
(ALL DIMENSIONS TYPICAL AT EACH BEARING)



ELEVATION

PROJECT NO. U-4405
CUMBERLAND COUNTY
 STATION: 26+78.00 -RPB-
 SHEET 1 OF 3



STATE OF NORTH CAROLINA
 DEPARTMENT OF TRANSPORTATION
 RALEIGH
**SUBSTRUCTURE
 END BENT #2**

KCA 4800 SIX FORKS ROAD SUITE 120
 KISINGER CAMPO & ASSOCIATES RALEIGH, NC 27609
 (919) 882-7839

DRAWN BY: J. B. HANNA DATE: 02-17
 CHECKED BY: S. BOYD DATE: 05-17
 DESIGN ENGINEER OF RECORD: S. CULLUM DATE: 05-17

REVISIONS						SHEET NO.
NO.	BY:	DATE:	NO.	BY:	DATE:	S-20
1			3			TOTAL SHEETS
2			4			26

DOCUMENT NOT CONSIDERED FINAL UNLESS ALL SIGNATURES COMPLETED