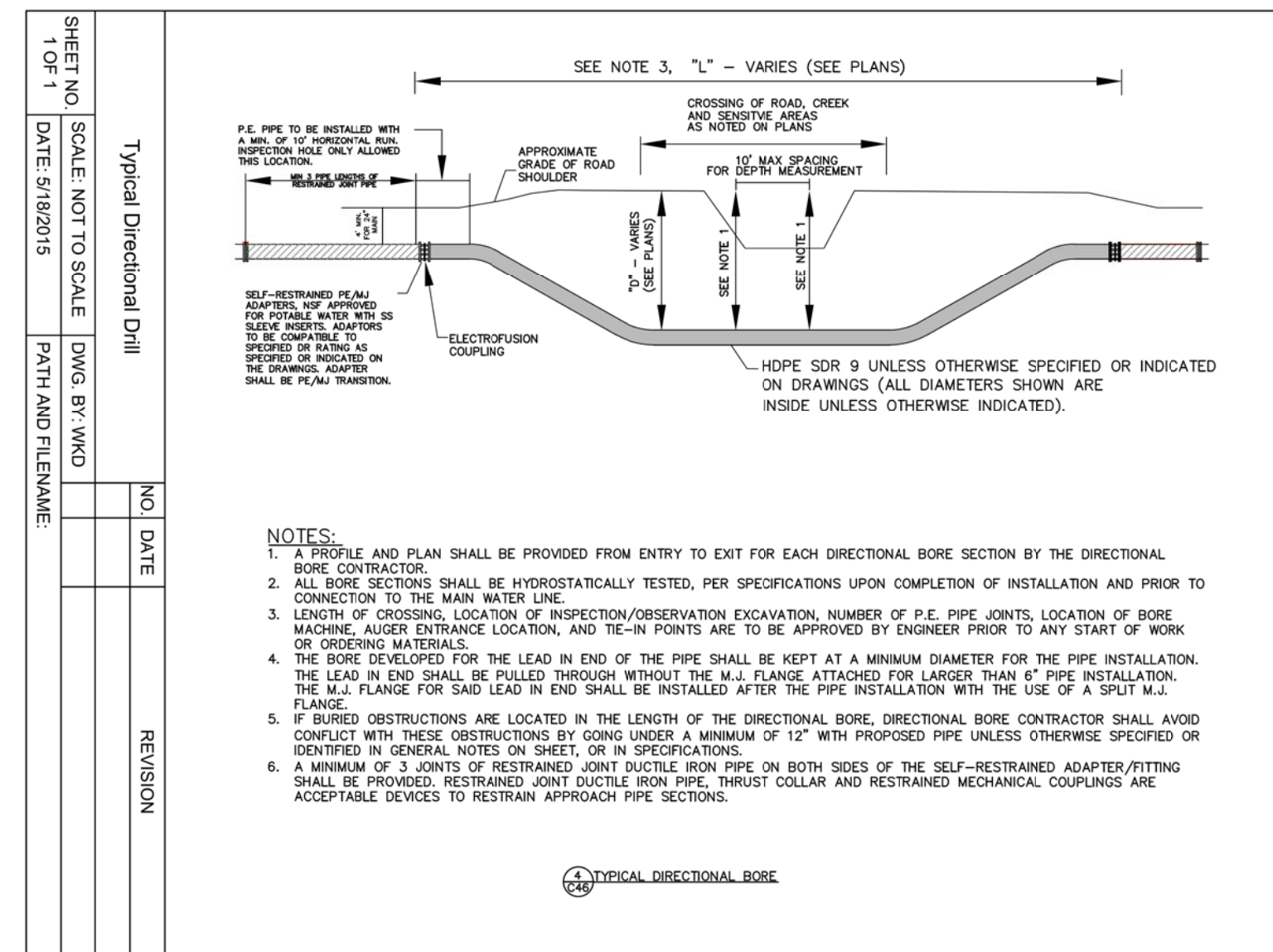


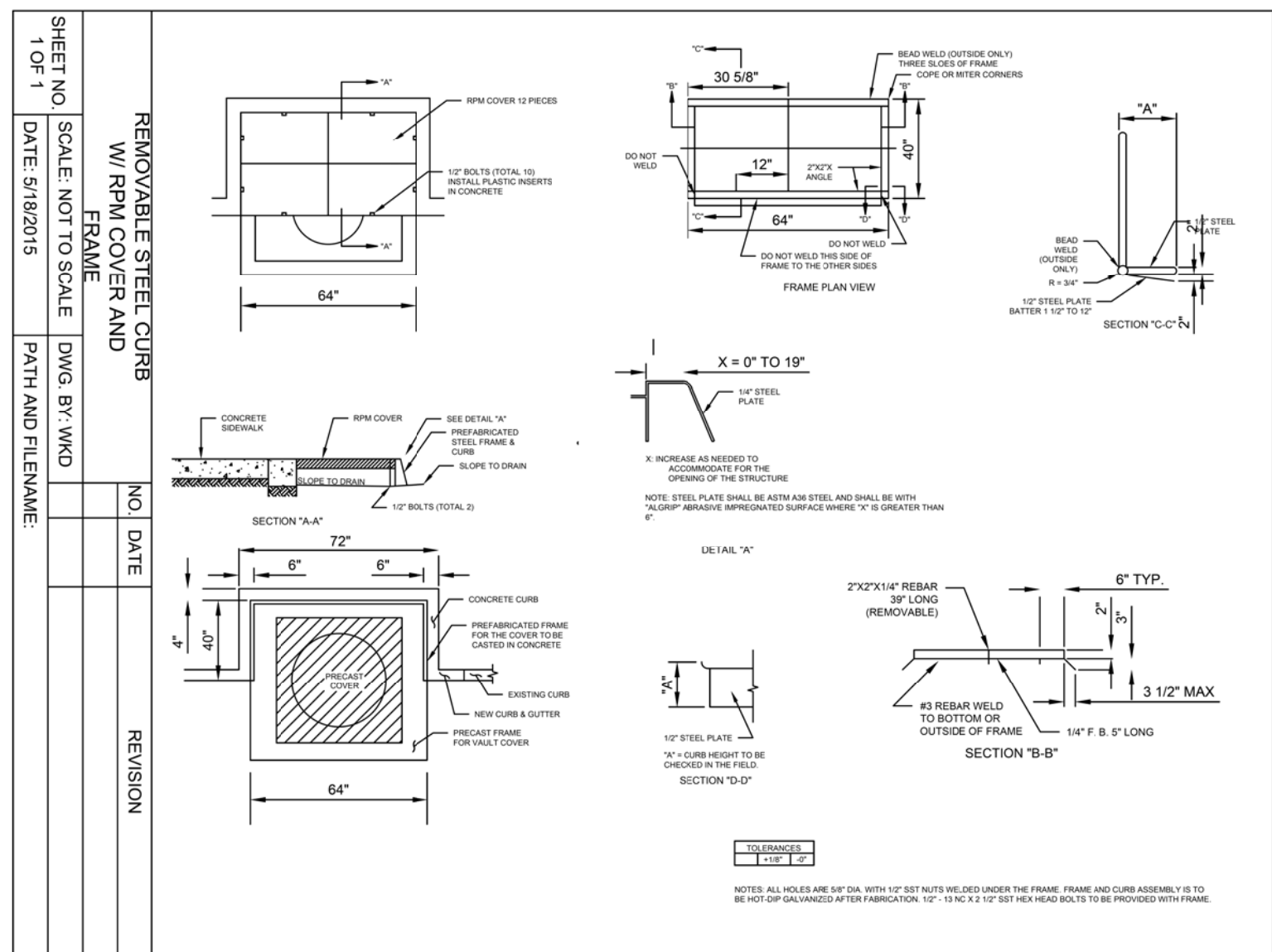


UTILITY CONSTRUCTION

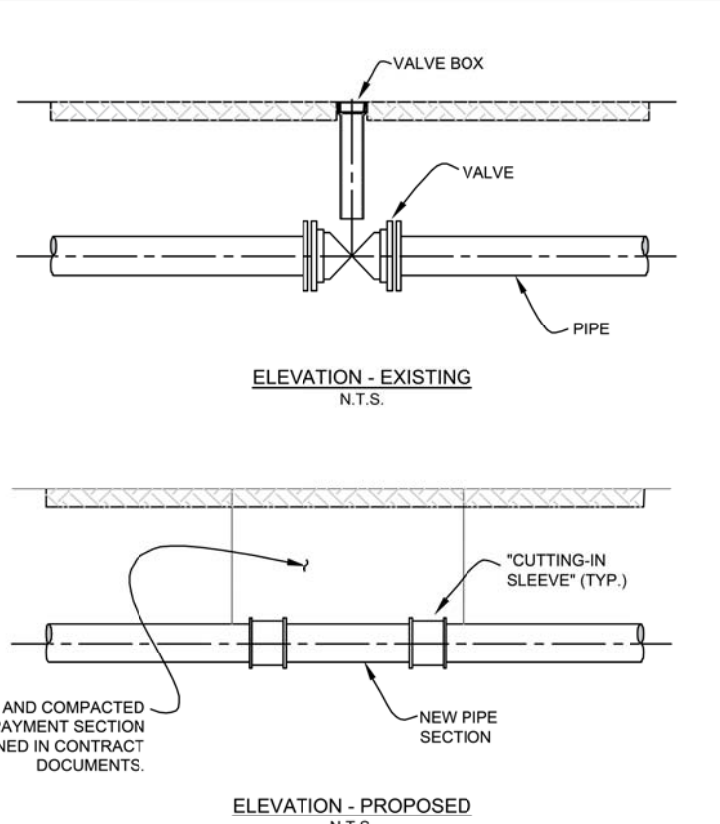


- NOTES:  
 1. A PROFILE AND PLAN SHALL BE PROVIDED FROM ENTRY TO EXIT FOR EACH DIRECTIONAL BORE SECTION BY THE DIRECTIONAL BORE CONTRACTOR.  
 2. ALL BORE SECTIONS SHALL BE HYDROSTATICALLY TESTED, PER SPECIFICATIONS UPON COMPLETION OF INSTALLATION AND PRIOR TO CONNECTION TO THE MAIN WATER LINE.  
 3. LENGTH OF CROSSING, LOCATION OF INSPECTION/OBSERVATION EXCAVATION, NUMBER OF P.E. PIPE JOINTS, LOCATION OF BORE MACHINE, AUGER ENTRANCE LOCATION, AND TIE-IN POINTS ARE TO BE APPROVED BY ENGINEER PRIOR TO ANY START OF WORK OR ORDERING MATERIALS.  
 4. THE BORE DEVELOPED FOR THE LEAD IN END OF THE PIPE SHALL BE KEPT AT A MINIMUM DIAMETER FOR THE PIPE INSTALLATION. THE LEAD IN END SHALL BE PULLED THROUGH WITHOUT THE M.J. FLANGE ATTACHED FOR LARGER THAN 8" PIPE INSTALLATION. THE M.J. FLANGE FOR SAID LEAD IN END SHALL BE INSTALLED AFTER THE PIPE INSTALLATION WITH THE USE OF A SPLIT M.J. FLANGE.  
 5. IF BURIED OBSTRUCTIONS ARE LOCATED IN THE LENGTH OF THE DIRECTIONAL BORE, DIRECTIONAL BORE CONTRACTOR SHALL AVOID CONFLICT WITH THESE OBSTRUCTIONS BY GOING UNDER A MINIMUM OF 12" WITH PROPOSED PIPE UNLESS OTHERWISE SPECIFIED OR IDENTIFIED IN GENERAL NOTES ON SHEET OR IN SPECIFICATIONS.  
 6. A MINIMUM OF 3 JOINTS OF RESTRAINED JOINT DUCTILE IRON PIPE ON BOTH SIDES OF THE SELF-RESTRAINED ADAPTER/FITTING SHALL BE PROVIDED. RESTRAINED JOINT DUCTILE IRON PIPE, THRUST COLLAR AND RESTRAINED MECHANICAL COUPLINGS ARE ACCEPTABLE DEVICES TO RESTRAIN APPROACH PIPE SECTIONS.

TYPICAL DIRECTIONAL BORE



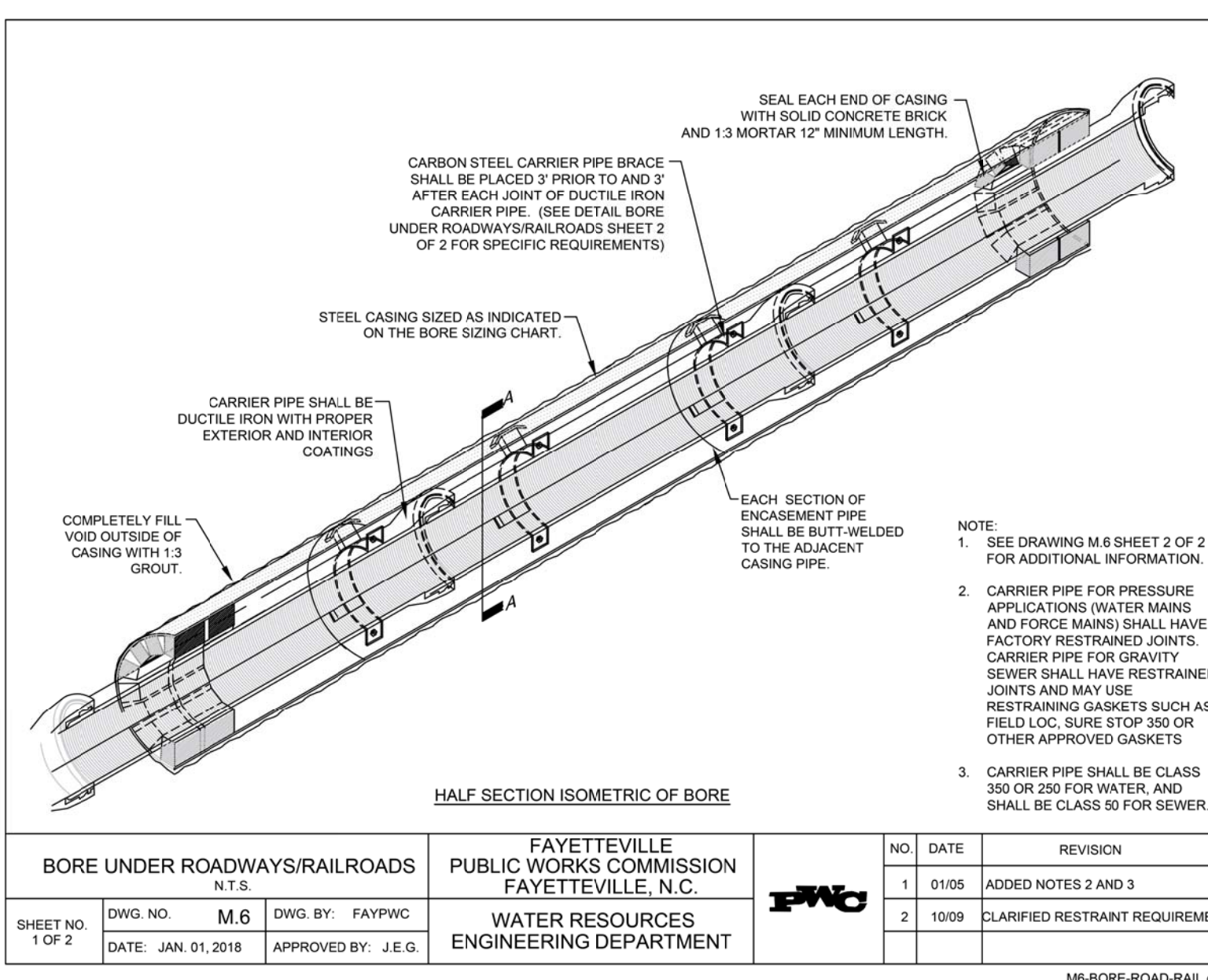
MINIMUM LENGTH OF BURIED PIPE BETWEEN CLOSED VALVE AND EXCAVATION FOR RESTRAINT		
BASED ON MINIMUM TYPE 2 BEDDING IN SILT SOIL		
Diameter (inches)	Depth of Cover (feet)	Length (feet)
16	3 - 3.99	221
16	4 - 5.99	173
16	6 - 7.99	120
16	8 - 9.99	82
16	>= 10	75
12	3 - 3.99	174
12	4 - 5.99	135
12	6 - 7.99	93
12	8 - 9.99	71
12	>= 10	67
10	3 - 3.99	149
10	4 - 5.99	115
10	6 - 7.99	79
10	8 - 9.99	60
10	>= 10	49
8	3 - 3.99	123
8	4 - 5.99	95
8	6 - 7.99	65
8	8 - 9.99	49
8	>= 10	42
6	3 - 3.99	95
6	4 - 5.99	73
6	6 - 7.99	50
6	8 - 9.99	38
6	>= 10	31



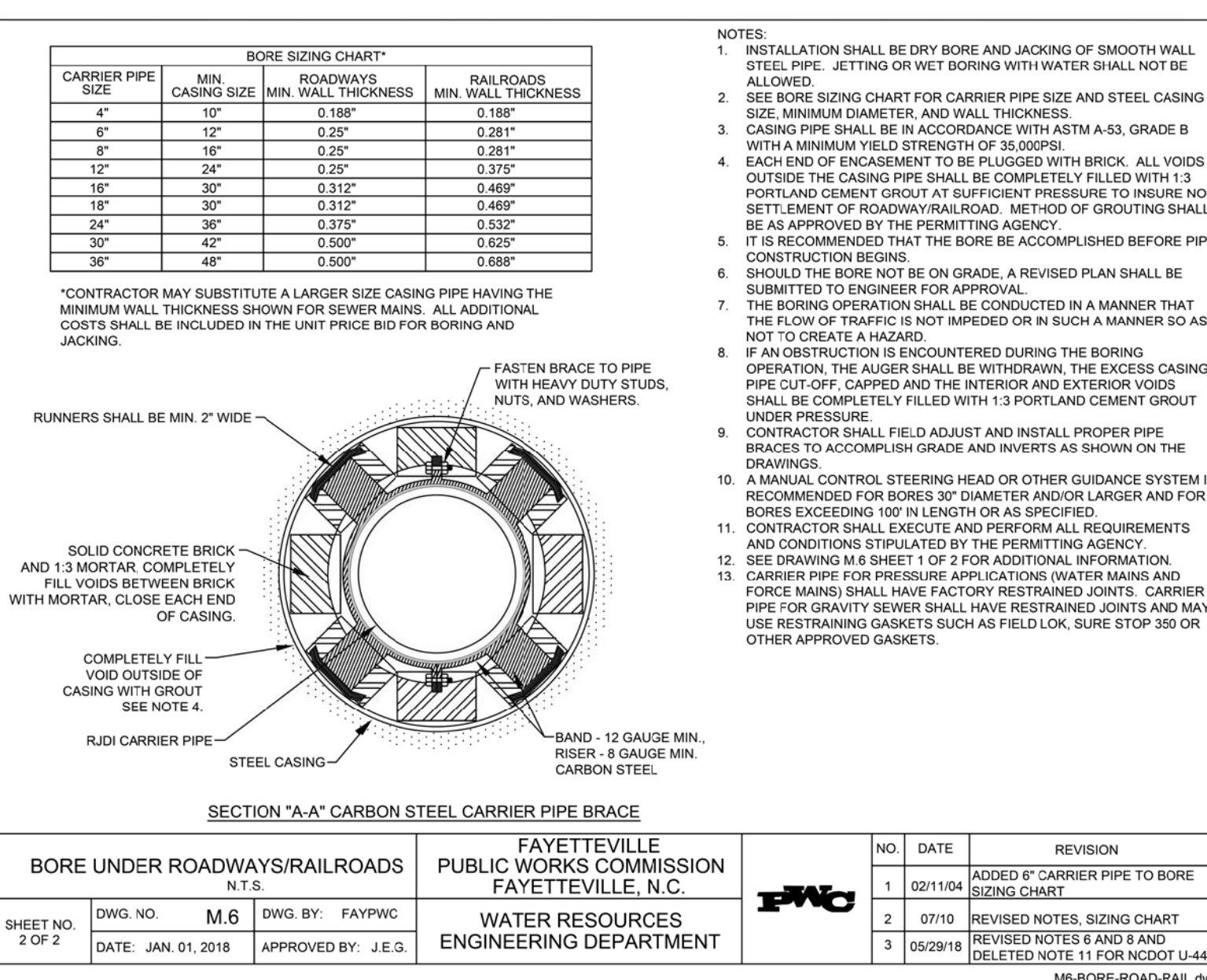
VALVE REMOVAL WITH EXCAVATION N.T.S.		FAYETTEVILLE PUBLIC WORKS COMMISSION FAYETTEVILLE, N.C.		NO.	DATE	REVISION
SHEET NO. 1 OF 1	DWG. NO. M.15 DATE: JAN. 01, 2018	DWG. BY: FAYPWC APPROVED BY: J.E.G.	WATER RESOURCES ENGINEERING DEPARTMENT			

UTILITY GENERAL NOTES		FAYETTEVILLE PUBLIC WORKS COMMISSION FAYETTEVILLE, N.C.		NO.	DATE	REVISION
SHEET NO. 1 OF 1	DWG. NO. N.2 DATE: JAN. 01, 2018	DWG. BY: FAYPWC APPROVED BY: J.E.G.	WATER RESOURCES ENGINEERING DEPARTMENT	1	05/29/18	NOTES 1, 3 AND 5 AND DELETED NOTE 7 FOR NCDOT U-4405.

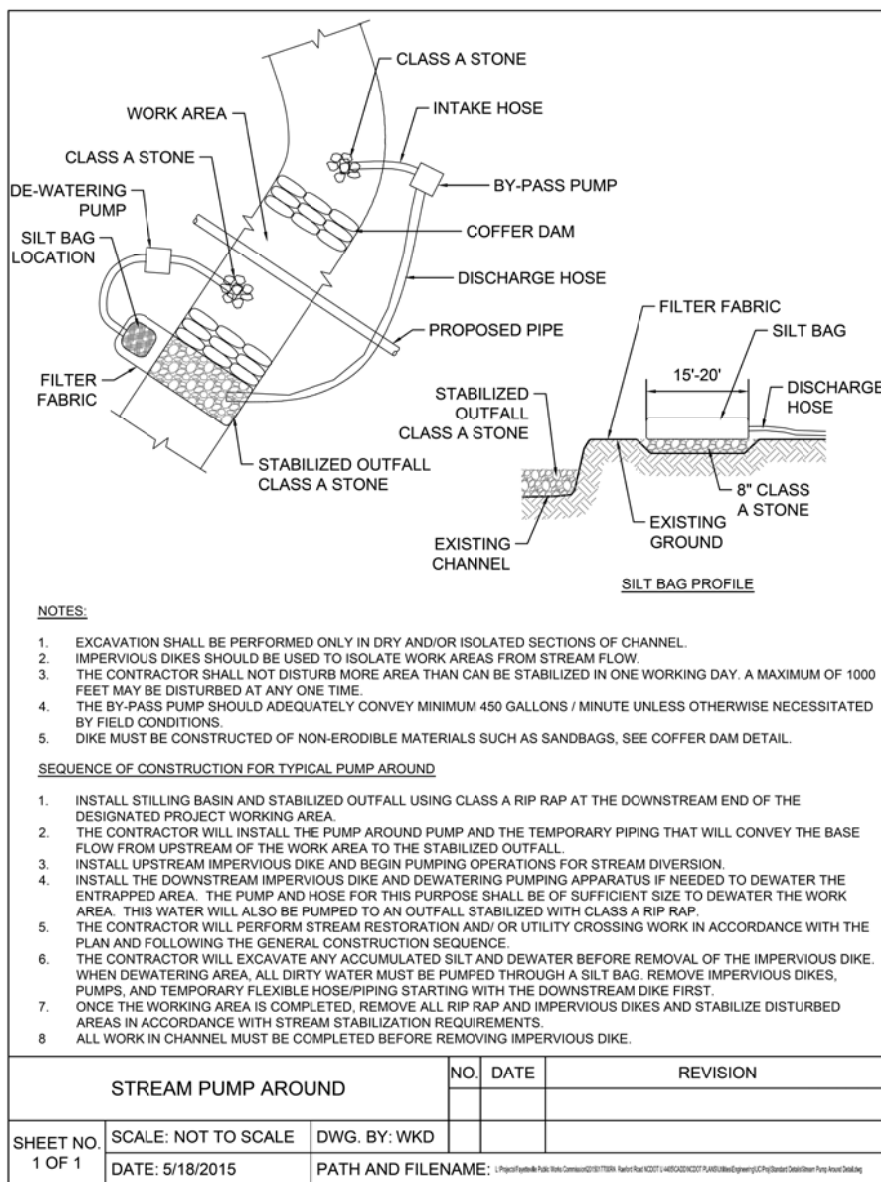
UTILITY GENERAL NOTES		FAYETTEVILLE PUBLIC WORKS COMMISSION FAYETTEVILLE, N.C.		NO.	DATE	REVISION
SHEET NO. 1 OF 1	DWG. NO. N.2 DATE: JAN. 01, 2018	DWG. BY: FAYPWC APPROVED BY: J.E.G.	WATER RESOURCES ENGINEERING DEPARTMENT	1	05/29/18	NOTES 1, 3 AND 5 AND DELETED NOTE 7 FOR NCDOT U-4405.



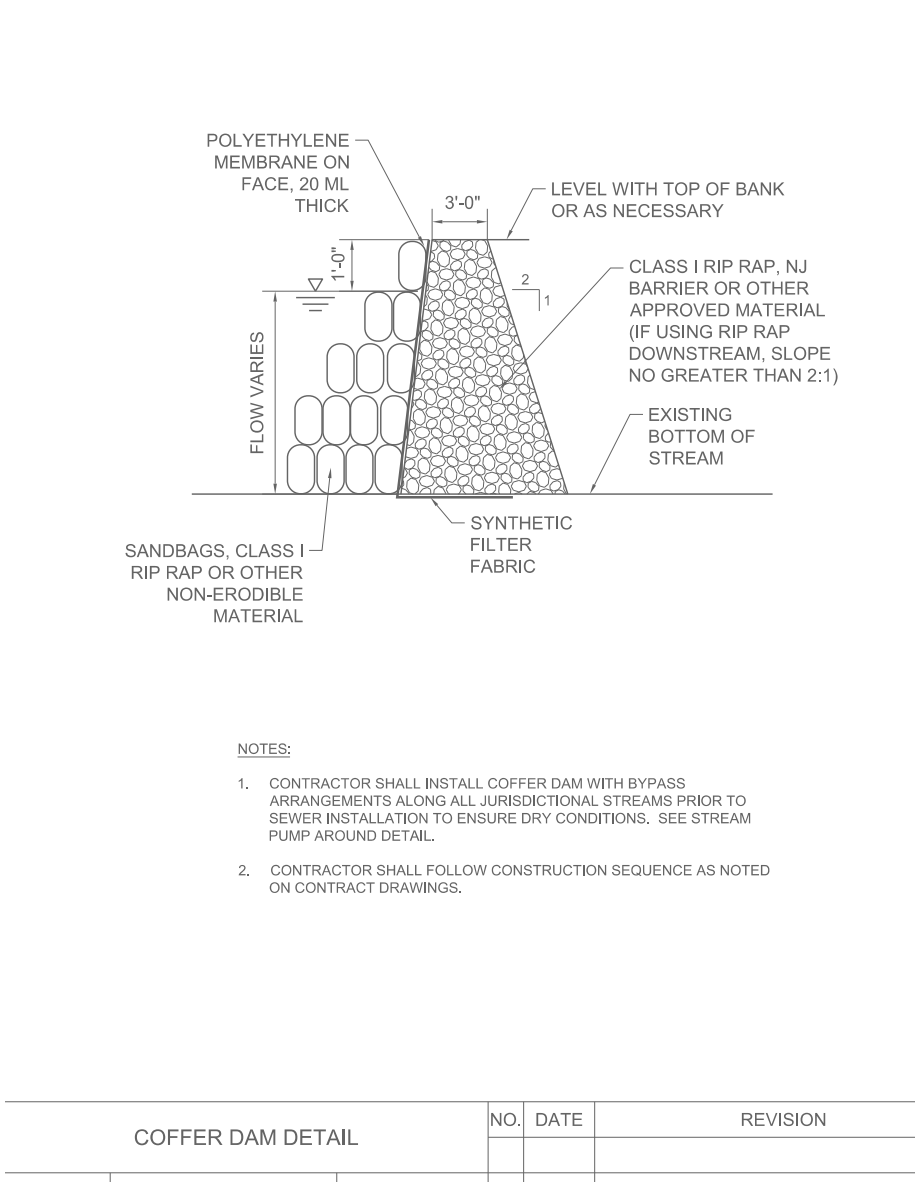
BORE UNDER ROADWAYS/RAILROADS N.T.S.		FAYETTEVILLE PUBLIC WORKS COMMISSION FAYETTEVILLE, N.C.		NO.	DATE	REVISION
SHEET NO. 1 OF 2	DWG. NO. M.6 DATE: JAN. 01, 2018	DWG. BY: FAYPWC APPROVED BY: J.E.G.	WATER RESOURCES ENGINEERING DEPARTMENT	1	0105	ADDED NOTES 2 AND 3
				2	1009	CLARIFIED RESTRAINT REQUIREMENTS



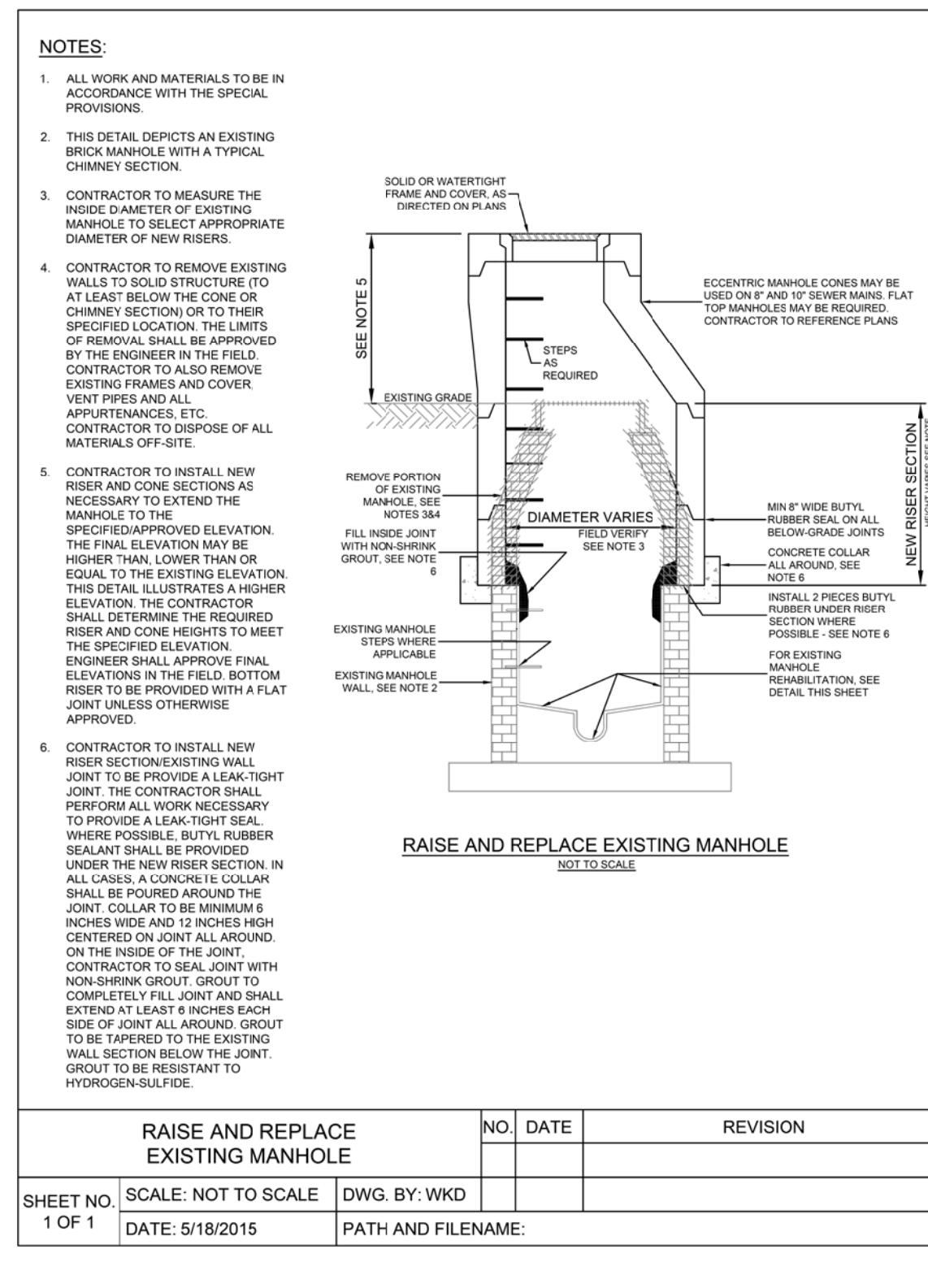
BORE UNDER ROADWAYS/RAILROADS N.T.S.		FAYETTEVILLE PUBLIC WORKS COMMISSION FAYETTEVILLE, N.C.		NO.	DATE	REVISION
SHEET NO. 2 OF 2	DWG. NO. M.6 DATE: JAN. 01, 2018	DWG. BY: FAYPWC APPROVED BY: J.E.G.	WATER RESOURCES ENGINEERING DEPARTMENT	1	02/11/04	ADDED 6" CARRIER PIPE TO BORE SIZING CHART
				2	07/10	REVISED NOTES, SIZING CHART
				3	05/29/18	REVISED NOTES 6 AND 8 AND DELETED NOTE 11 FOR NCDOT U-4405



STREAM PUMP AROUND		NO.	DATE	REVISION
SHEET NO. 1 OF 1	SCALE: NOT TO SCALE DATE: 5/18/2015	DWG. BY: WMD PATH AND FILENAME:		



COFFER DAM DETAIL		NO.	DATE	REVISION
SHEET NO. 1 OF 1	SCALE: NOT TO SCALE DATE: 5/18/2015	DWG. BY: WMD PATH AND FILENAME:		



RAISE AND REPLACE EXISTING MANHOLE		NO.	DATE	REVISION
SHEET NO. 1 OF 1	SCALE: NOT TO SCALE DATE: 5/18/2015	DWG. BY: WMD PATH AND FILENAME:		