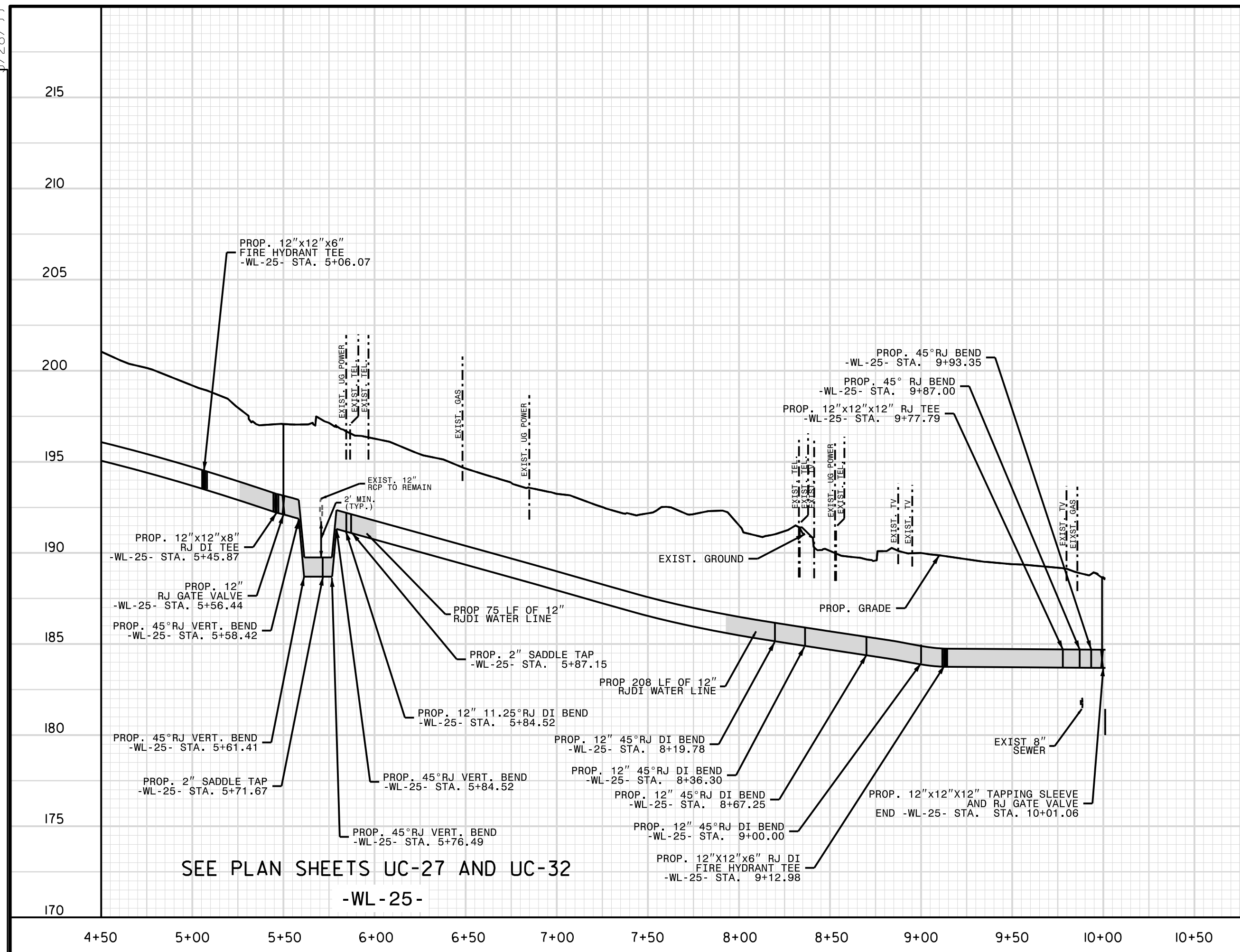


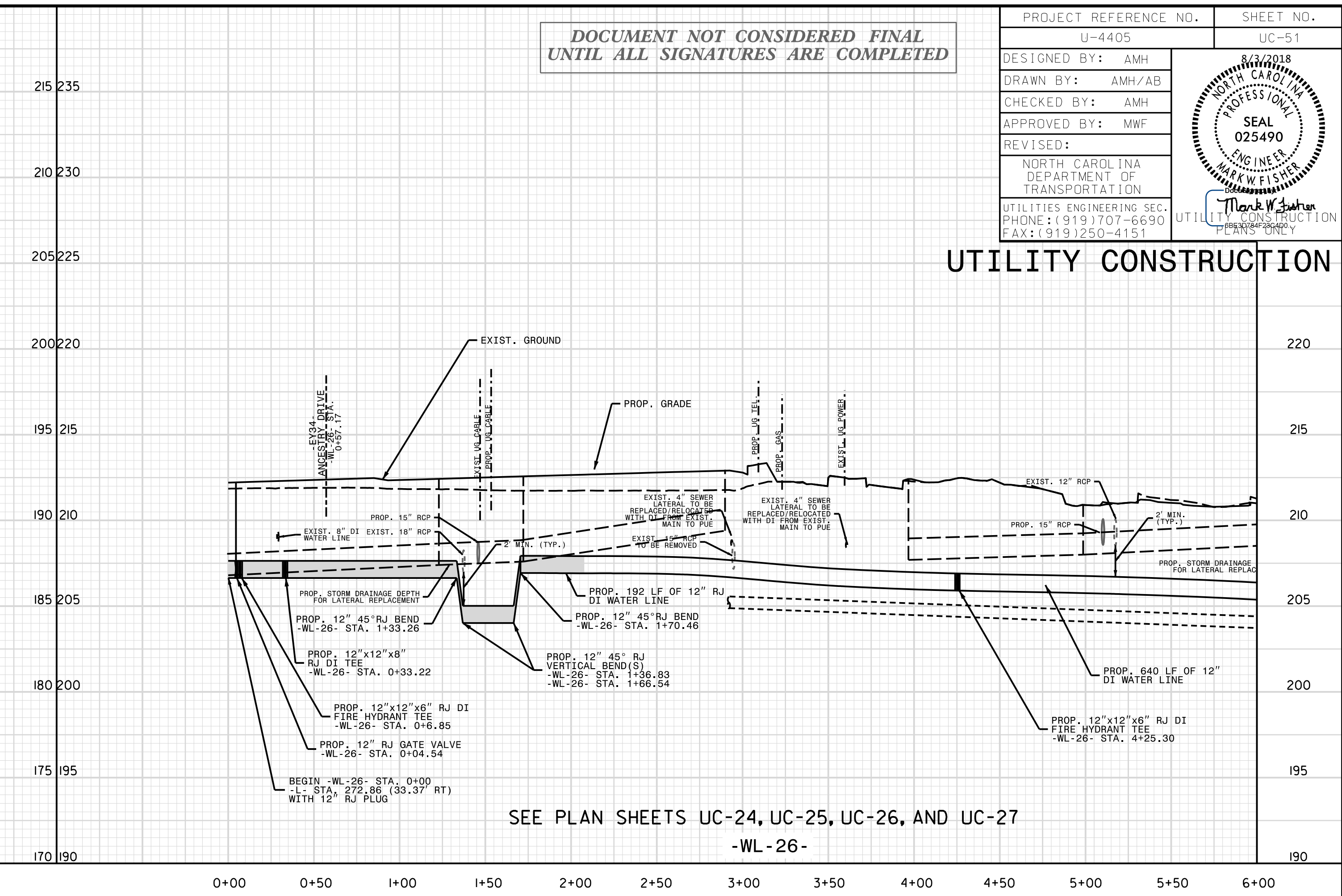
DOCUMENT NOT CONSIDERED FINAL
UNTIL ALL SIGNATURES ARE COMPLETED

PROJECT REFERENCE NO.	U-4405	SHEET NO.	UC-51
DESIGNED BY:	AMH		
DRAWN BY:	AMH/AB		
CHECKED BY:	AMH		
APPROVED BY:	MWF		
REVISED:			
NORTH CAROLINA DEPARTMENT OF TRANSPORTATION		UTILITIES ENGINEERING SEC. PHONE: (919) 707-6690 FAX: (919) 250-4151	

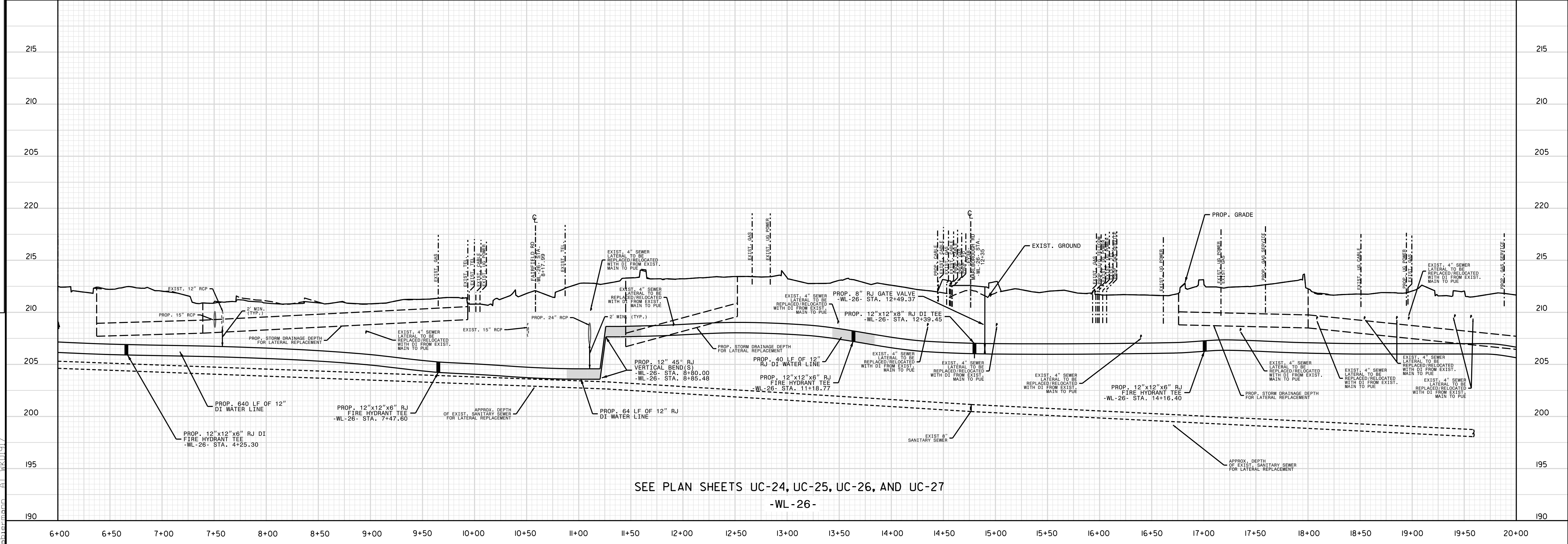
UTILITY CONSTRUCTION



SEE PLAN SHEETS UC-27 AND UC-32
-WL-25-



SEE PLAN SHEETS UC-24, UC-25, UC-26, AND UC-27
-WL-26-



SEE PLAN SHEETS UC-24, UC-25, UC-26, AND UC-27
-WL-26-

REVISIONS

UTILITY REV. - JULY 23, 2008 - ADDED 40' LF OF 12" RCP TO WL-25 NEAR STA 5+45
 [C:\p\projects\2015017700RA - Reelford Road NCDOT U 4405\CADD\NCDOT PLANS\Utilities\Engineering\UC-Proj\U4405.ut.pl.uc51.esh.dgn]
 27-Jul-2016 14:20
 [C:\p\projects\2015017700RA - Reelford Road NCDOT U 4405\CADD\NCDOT PLANS\Utilities\Engineering\UC-Proj\U4405.ut.pl.uc51.esh.dgn]