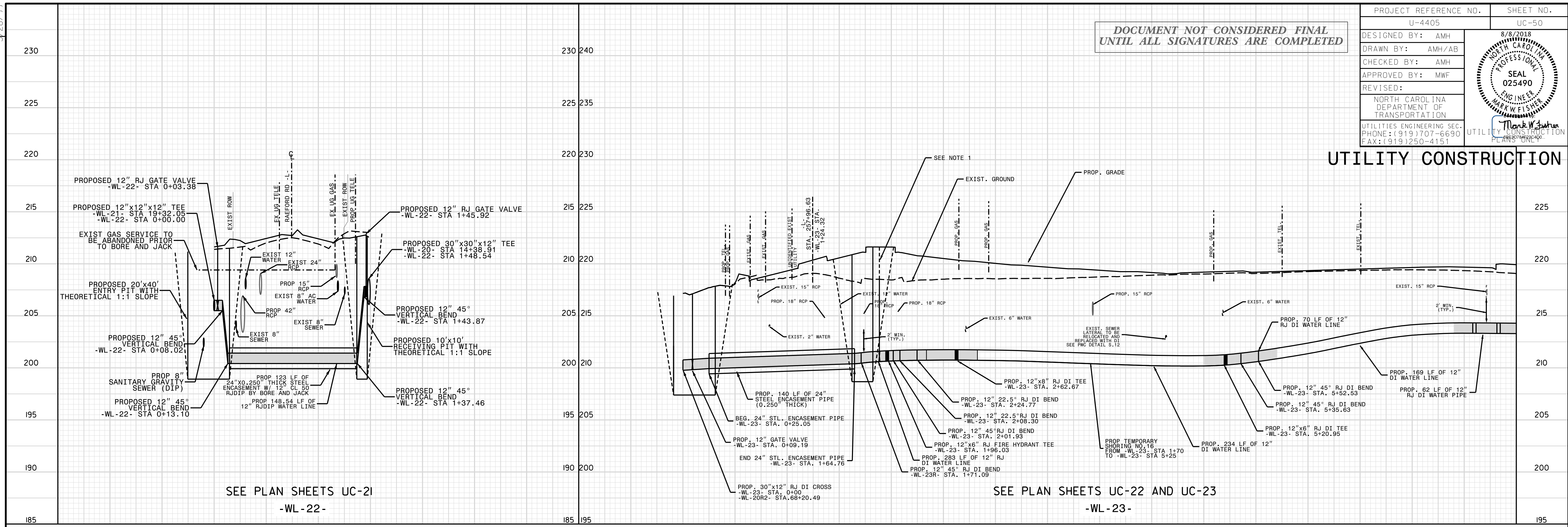


DOCUMENT NOT CONSIDERED FINAL
UNTIL ALL SIGNATURES ARE COMPLETED

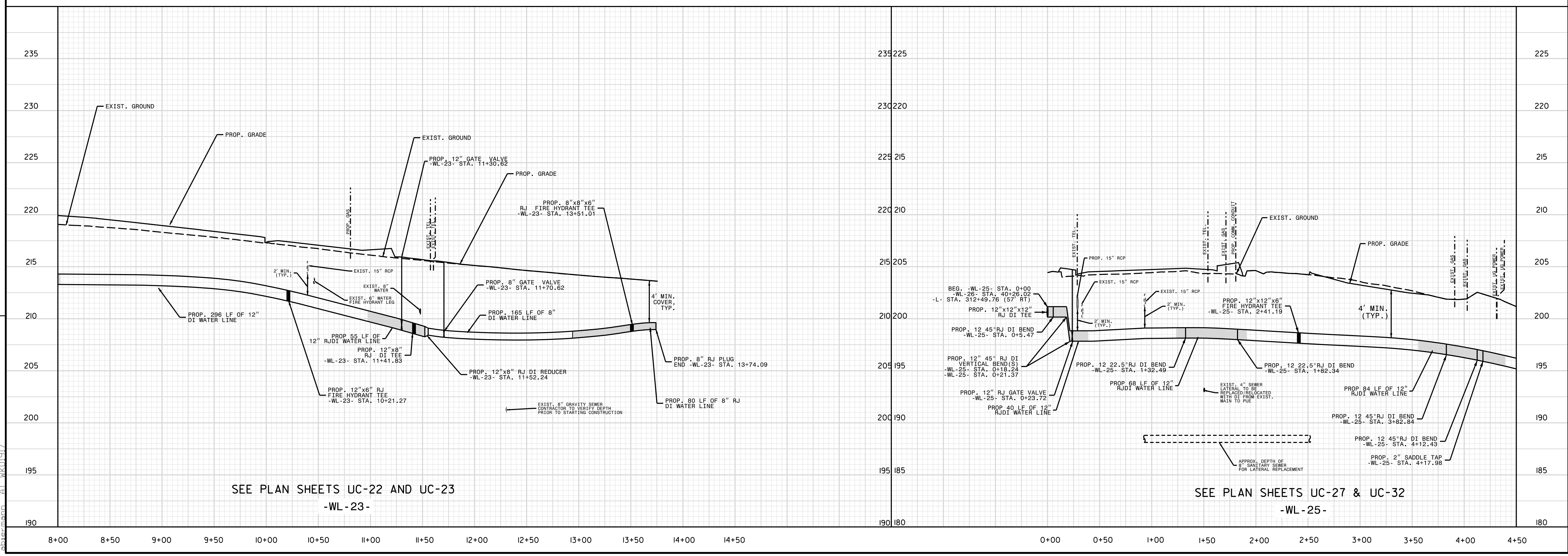
PROJECT REFERENCE NO.	U-4405	SHEET NO.	UC-50
DESIGNED BY:	AMH		
DRAWN BY:	AMH/AB		
CHECKED BY:	AMH		
APPROVED BY:	MWF		
REVISED BY:			
NORTH CAROLINA DEPARTMENT OF TRANSPORTATION			
UTILITIES ENGINEERING SEC. PHONE: (919) 707-6690 FAX: (919) 250-4151			

UTILITY CONSTRUCTION



SEE PLAN SHEETS UC-21
-WL-22-

SEE PLAN SHEETS UC-22 AND UC-23
-WL-23-



SEE PLAN SHEETS UC-22 AND UC-23
-WL-23-

SEE PLAN SHEETS UC-27 & UC-32
-WL-25-

REVISIONS
 07-AUG-2018 10:54 [unclear] Public Works Commission 2015017700RA Reeford Road NCDOT U 4405\CADD\NCDOT PLANS\Utilities\Engineering\UC-Proj\U4405.ut.pl_uc50.psh.dgn
 07-AUG-2018 10:54 [unclear] Public Works Commission 2015017700RA Reeford Road NCDOT U 4405\CADD\NCDOT PLANS\Utilities\Engineering\UC-Proj\U4405.ut.pl_uc50.psh.dgn
 UTILITY REV. - JULY 23, 2018 - REVISED RCP LENGTH FROM 274 LF TO 293 LF ON WL-23 - REVISED RCP LENGTH FROM 274 LF TO 293 LF ON WL-23 - REVISED ENCASEMENT THICKNESS ON 24" ENCASEMENTS