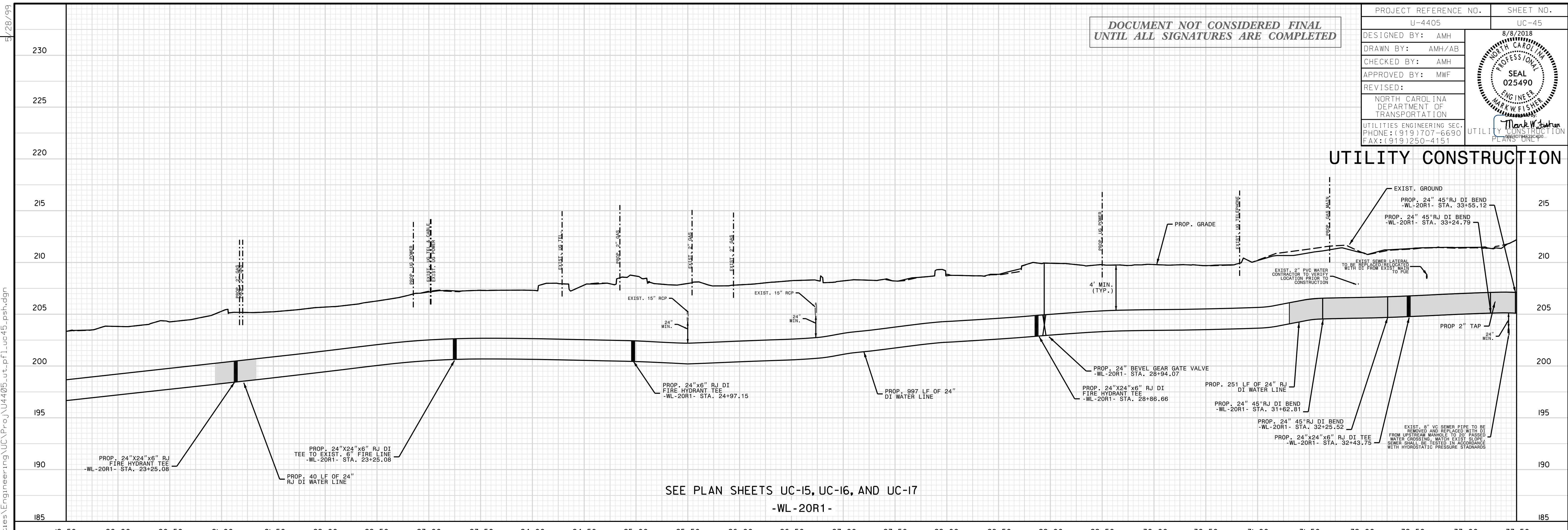
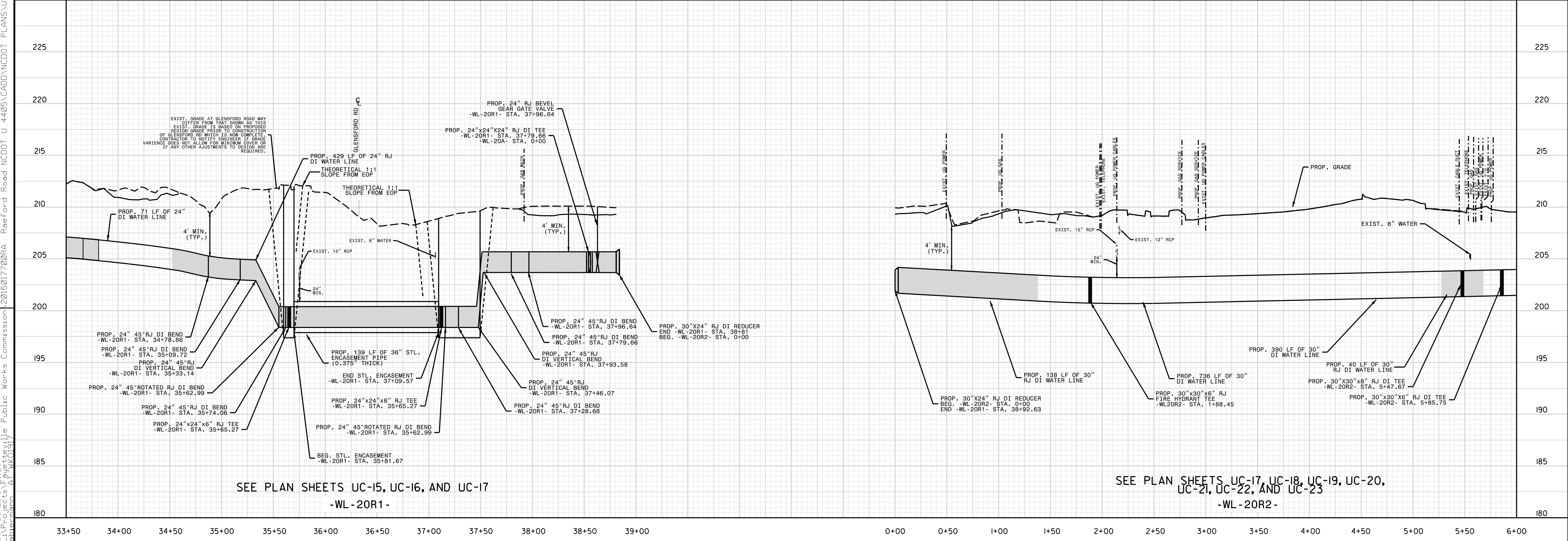


DOCUMENT NOT CONSIDERED FINAL
UNTIL ALL SIGNATURES ARE COMPLETED

PROJECT REFERENCE NO.	UC-45
DESIGNED BY:	AMH
DRAWN BY:	AMH/AB
CHECKED BY:	AMH
APPROVED BY:	MWF
REVISED:	
NORTH CAROLINA DEPARTMENT OF TRANSPORTATION	
UTILITIES ENGINEERING SEC. PHONE: (919) 707-6690 FAX: (919) 250-4151	
8/8/2018 SEAL 025490 PROFESSIONAL ENGINEER MARK W. FISHER	
UTILITY CONSTRUCTION PLANS ONLY	



SEE PLAN SHEETS UC-15, UC-16, AND UC-17
-WL-20R1-



SEE PLAN SHEETS UC-15, UC-16, AND UC-17
-WL-20R1-
SEE PLAN SHEETS UC-17, UC-18, UC-19, UC-20,
UC-21, UC-22, AND UC-23
-WL-20R2-

REVISIONS
UTILITY REV. - JULY 24, 2018 - ADDER LABEL ABOUT SEWER REPAIRMENT TO WL-20R1 CONNECTION - ADVISED ENCLOSURE THICKNESS AND LENGTH FOR 36 ENCLOSURE
07-AUG-2018 09:20
L:\P\08-2018-09-20
Charlotteville Public Works Commission\2015017700RA Reeford Road NCDOT U 4405\CADD\NCDOT PLANS\Utilities\Engineering\UC\Proj\U4405.ut.pfl_uc45.psh.vdgn