

PROJECT REFERENCE NO.	SHEET NO.
U-4405	UC-32
DESIGNED BY: AMH	
DRAWN BY: AMH/AE	
CHECKED BY: AMH	
APPROVED BY: MWF	
REVISED:	
NORTH CAROLINA DEPARTMENT OF TRANSPORTATION UTILITIES ENGINEERING SECTION PHONE: (919) 707-6690 FAX: (919) 250-4151	

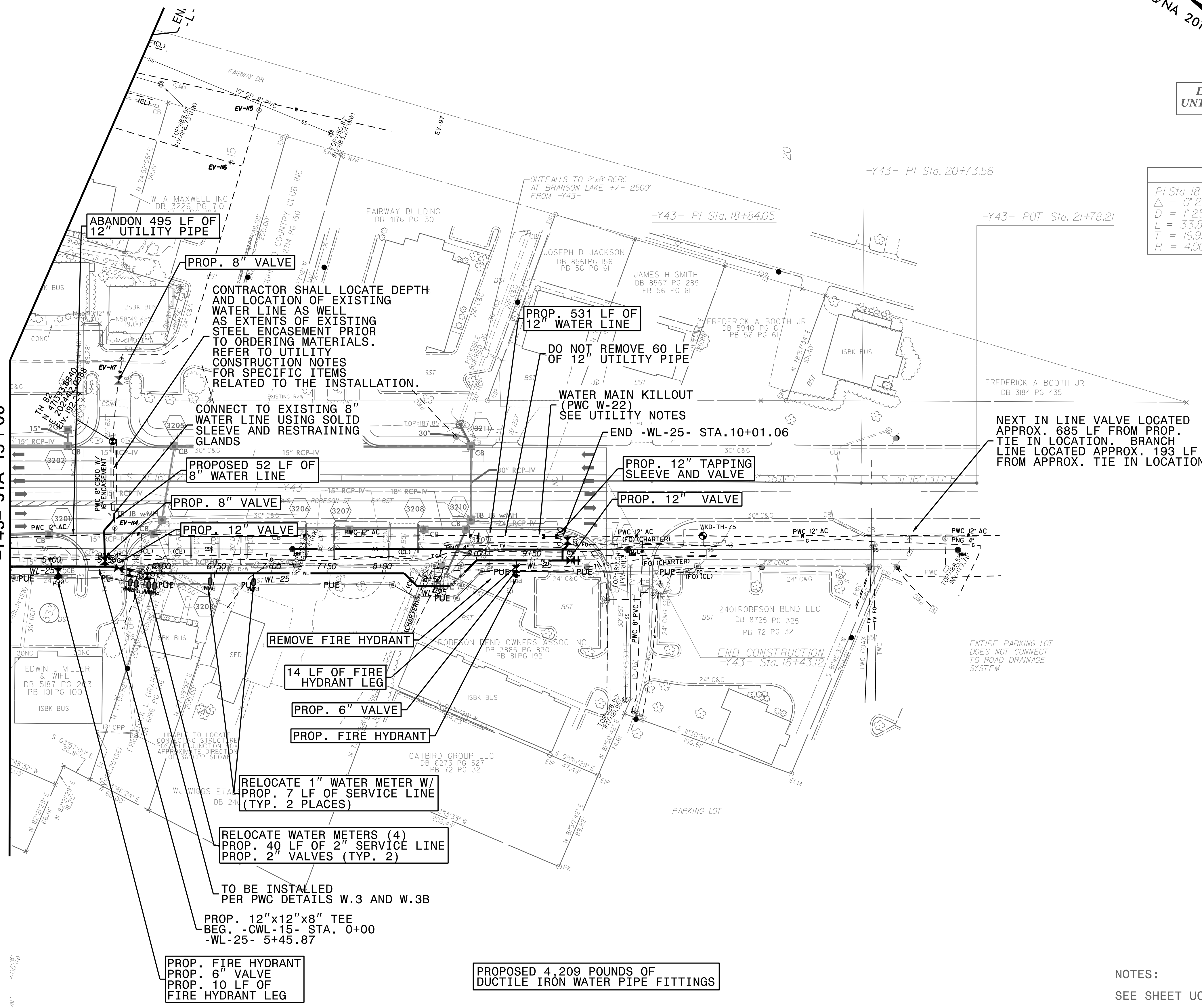
NC GRID
NAD 83/NA 2011

UTILITY CONSTRUCTION

DOCUMENT NOT CONSIDERED FINAL
UNTIL ALL SIGNATURES ARE COMPLETED

-Y43-	
PI Sta 18+97.74	PI Sta 21+77.77
$\Delta = 0' 29' 06.2" (RT)$	$\Delta = 0' 28' 56.2" (LT)$
$D = 1' 25' 56.6"$	$D = 1' 25' 56.6"$
$L = 33.86'$	$L = 33.67'$
$T = 16.93'$	$T = 16.83'$
$R = 4,000.00'$	$R = 4,000.00'$

MATCHLINE SEE SHEET UC-27
-Y43- STA 13+00



REVISIONS
UTILITY REV. - JULY 23, 2010 - REVISED TO REFLECT CHANGES TO THE PROPOSED 16\"/>

27-JUL-2018 14:19
C:\Projects\Public Works Commission\201501700PRA Reelford Road NCDOT U 4405\CADD\NCDOT PLANS\Utilities\Engineering\UC\Proj\U4405_ut_rdy\32_uc32_ish.vdgn
1/14/99

NOTES:
SEE SHEET UC-50 & UC-51 FOR -WL-25- PROFILE