

DOCUMENT NOT CONSIDERED FINAL
UNTIL ALL SIGNATURES ARE COMPLETED

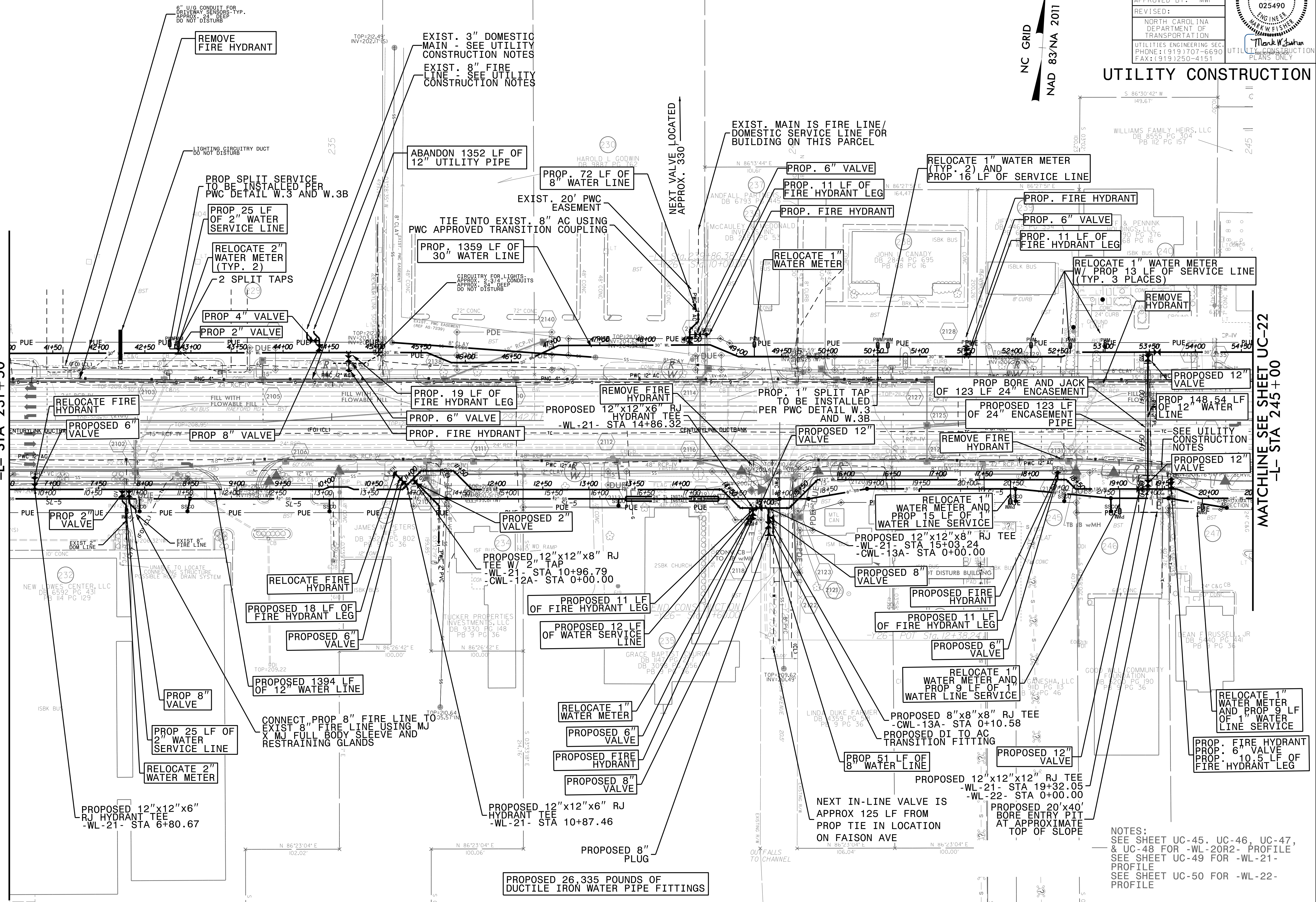
PROJECT REFERENCE NO.	SHEET NO.
U-4405	UC-21
DESIGNED BY: AMH	
DRAWN BY: AMH/AB	
CHECKED BY: AMH	
APPROVED BY: MWF	
REVISED:	
NORTH CAROLINA DEPARTMENT OF TRANSPORTATION UTILITIES ENGINEERING SEC. PHONE: (919) 707-6690 FAX: (919) 250-4151	

NC GRID
NAD 83/NA 2011

UTILITY CONSTRUCTION

MATCHLINE SEE SHEET UC-20
-L- STA 231+50

MATCHLINE SEE SHEET UC-22
-L- STA 245+00



REVISIONS

UTILITY REVISIONS - JULY 23, 2008 - REVISED PLAN TO SEE UTILITY CONSTRUCTION NOTES
- REVISIONS TO SEE UTILITY CONSTRUCTION NOTES
- ADDED VALVE TO WATER MAIN
- ADDED VALVE TO FIRE MAIN

27-Jul-2008 14:06:01 U:\4405\CADD\NC DOT U 4405\Utilities\Engineering\UC-Proj\U4405.ut_r.dwg UC21.psh.dgn
08/14/09

NOTES:
SEE SHEET UC-45, UC-46, UC-47,
& UC-48 FOR -WL-20R2- PROFILE
SEE SHEET UC-49 FOR -WL-21-
PROFILE
SEE SHEET UC-50 FOR -WL-22-
PROFILE

PROPOSED 26,335 POUNDS OF
DUCTILE IRON WATER PIPE FITTINGS