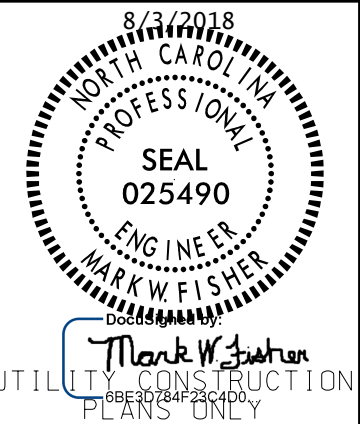


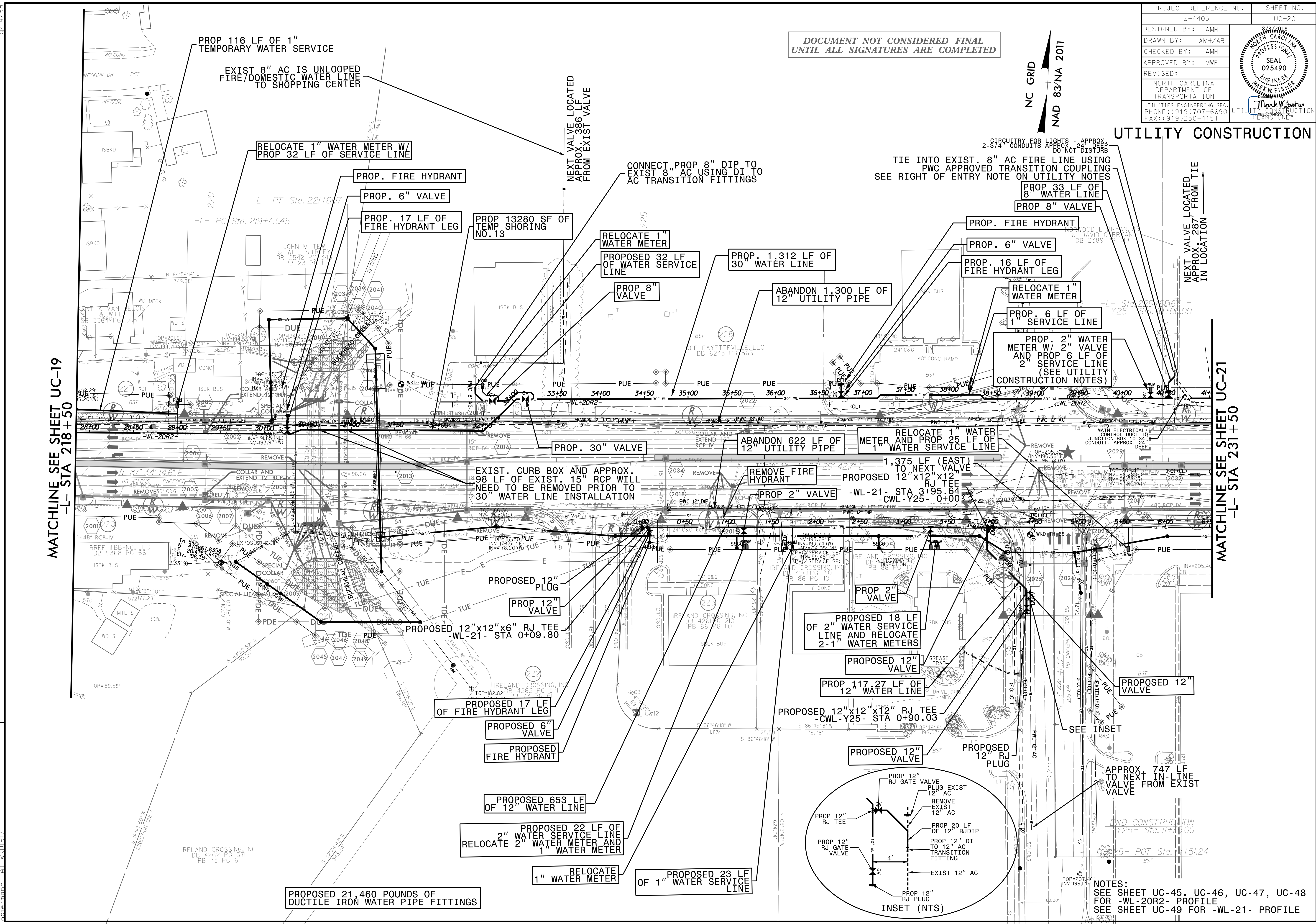
PROJECT REFERENCE NO.	UC-20
DESIGNED BY:	AMH
DRAWN BY:	AMH/AB
CHECKED BY:	AMH
APPROVED BY:	MWF
REVISED:	
NORTH CAROLINA DEPARTMENT OF TRANSPORTATION	
UTILITIES ENGINEERING SEC. PHONE: (919) 707-6690 FAX: (919) 250-4151	



DOCUMENT NOT CONSIDERED FINAL
UNTIL ALL SIGNATURES ARE COMPLETED

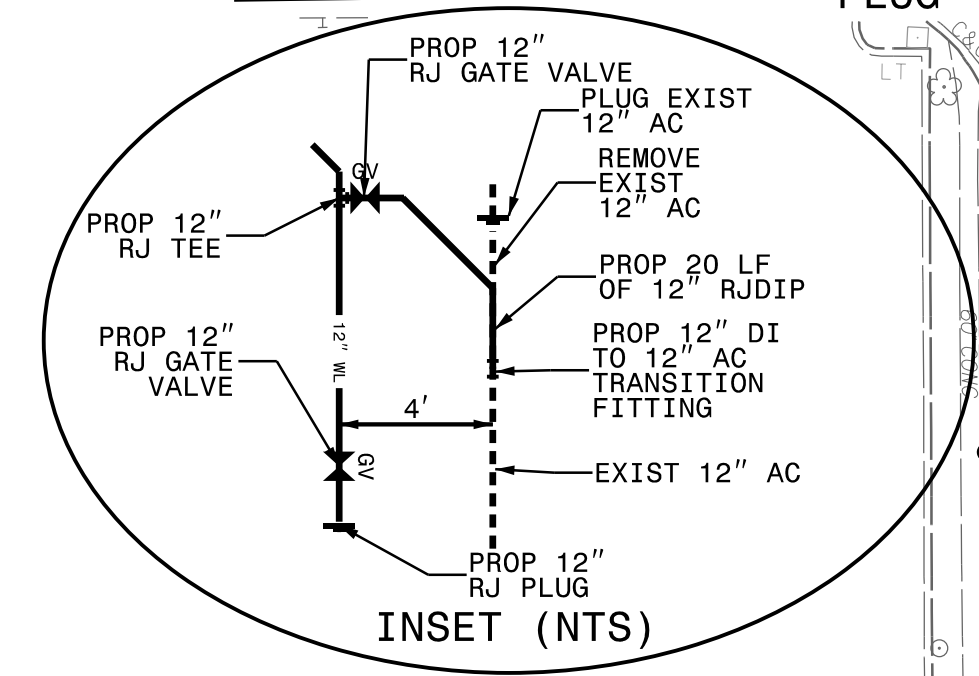
NC GRID
NAD 83/NA 2011

UTILITY CONSTRUCTION



MATCHLINE SEE SHEET UC-19
-L- STA 218+50

MATCHLINE SEE SHEET UC-21
-L- STA 231+50



NOTES:
SEE SHEET UC-45, UC-46, UC-47, UC-48
FOR -WL-20R2- PROFILE
SEE SHEET UC-49 FOR -WL-21- PROFILE

REVISIONS

UTILITY REV. - JULY 23, 2008 - SHIELDED PROP. WATER METER AND WATER SERVICE LINE FOR PARCEL 227
- ADDED VALVE NAME, EX-59 FOR CONSTRUCTION SCHEDULING

02-AUC-2018 1321
L:\Projects\Fayetteville Public Works Commission\2015017700RA -Roeford-Road-NCDDOT-4405\CADD\NCDDOT-PLANS\Utilities\Engineering\UC\Proj\Ud4405-ut.rd\20-uc20-pshdvgn

1/14/09