

PROJECT REFERENCE NO.	SHEET NO.
U-4405	UC-19
DESIGNED BY: AMH	
DRAWN BY: AMH/AB	
CHECKED BY: AMH	
APPROVED BY: MWF	
REVISED:	
NORTH CAROLINA DEPARTMENT OF TRANSPORTATION UTILITIES ENGINEERING SECTION PHONE: (919) 707-6690 FAX: (919) 250-4151	

**DOCUMENT NOT CONSIDERED FINAL
UNTIL ALL SIGNATURES ARE COMPLETED**

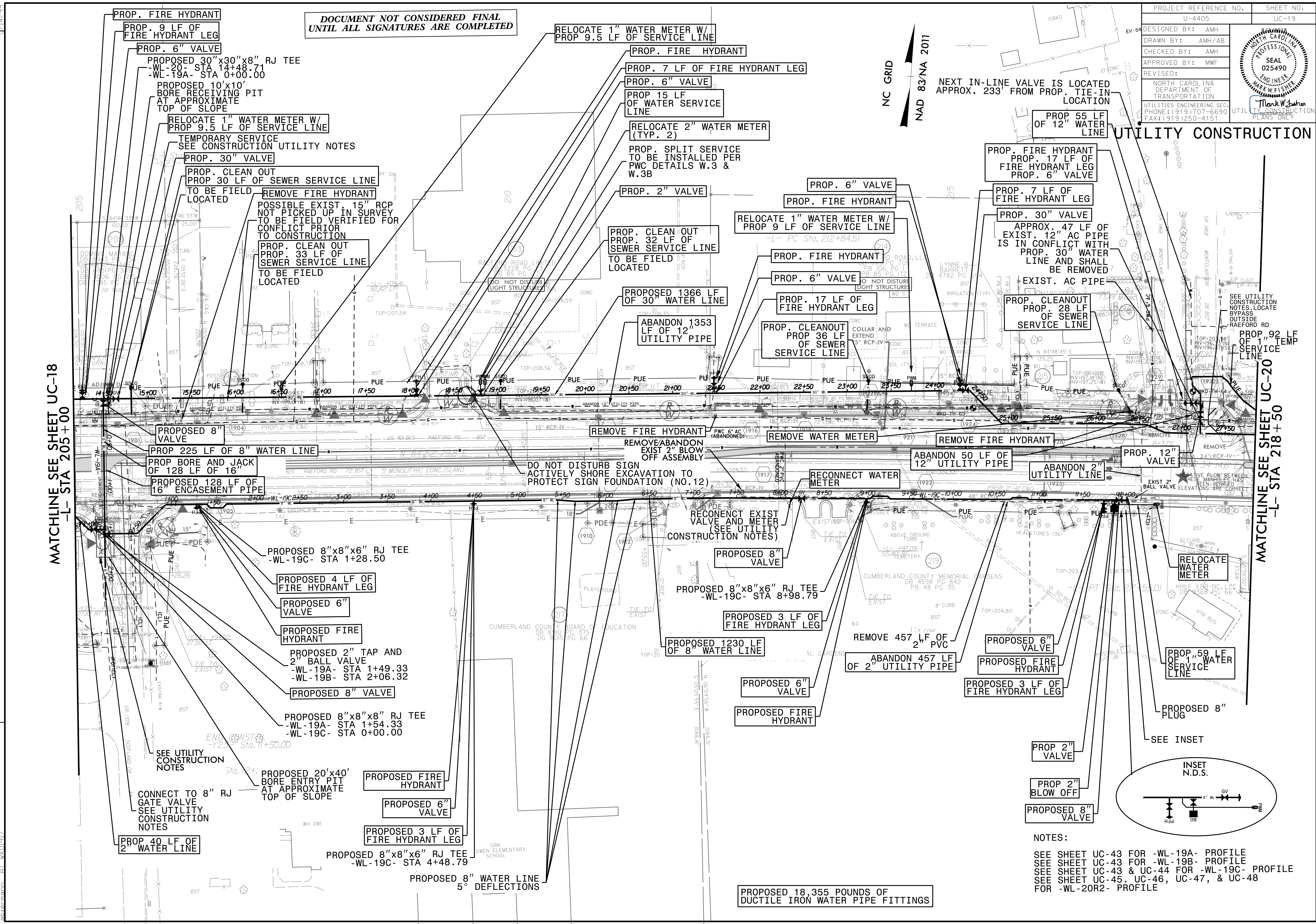
NC GRID
NAD 83/NA 2011

NEXT IN-LINE VALVE IS LOCATED
APPROX. 233' FROM PROP. TIE-IN
LOCATION

UTILITY CONSTRUCTION

MATCHLINE SEE SHEET UC-18
-L- STA 205+00

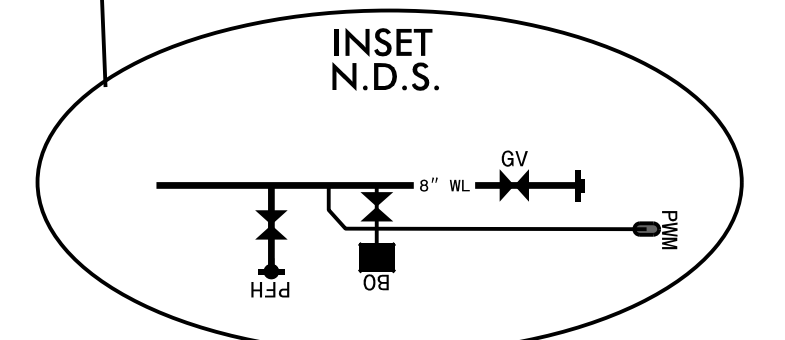
MATCHLINE SEE SHEET UC-20
-L- STA 218+50



REVISIONS

02-AUC-2018 13220
L:\Projects\Fayetteville Public Works Commission\2015\017700RA Raeford Road NCDOT U 4405\CADD\NCDOT PLANS\Utilities\Engineering\UC\Proj\U4405-ut.dwg uc19.psh.dgn
11/14/2019

NOTES:
SEE SHEET UC-43 FOR -WL-19A- PROFILE
SEE SHEET UC-43 FOR -WL-19B- PROFILE
SEE SHEET UC-43 & UC-44 FOR -WL-19C- PROFILE
SEE SHEET UC-45, UC-46, UC-47, & UC-48 FOR -WL-20R2- PROFILE



PROPOSED 18,355 POUNDS OF
DUCTILE IRON WATER PIPE FITTINGS