

DOCUMENT NOT CONSIDERED FINAL
UNTIL ALL SIGNATURES ARE COMPLETED

PROJECT REFERENCE NO.	U-4405	SHEET NO.	UC-13
DESIGNED BY:	AMH	DATE	8/3/2018
DRAWN BY:	AMH/AB	SEAL	025490
CHECKED BY:	AMH	ENGINEER	MARK W. FISHER
APPROVED BY:	MWF	PROFESSIONAL	
REVISED:			
NORTH CAROLINA DEPARTMENT OF TRANSPORTATION		UTILITY CONSTRUCTION PLANS ONLY	
UTILITIES ENGINEERING SEC. PHONE: (919) 707-6690 FAX: (919) 250-4151		TARHEEL TACO, LLC DB: 8613 PG 161 DB: 8613 PG 66 N 87°50'56" E 166.79' 30°	



UTILITY CONSTRUCTION

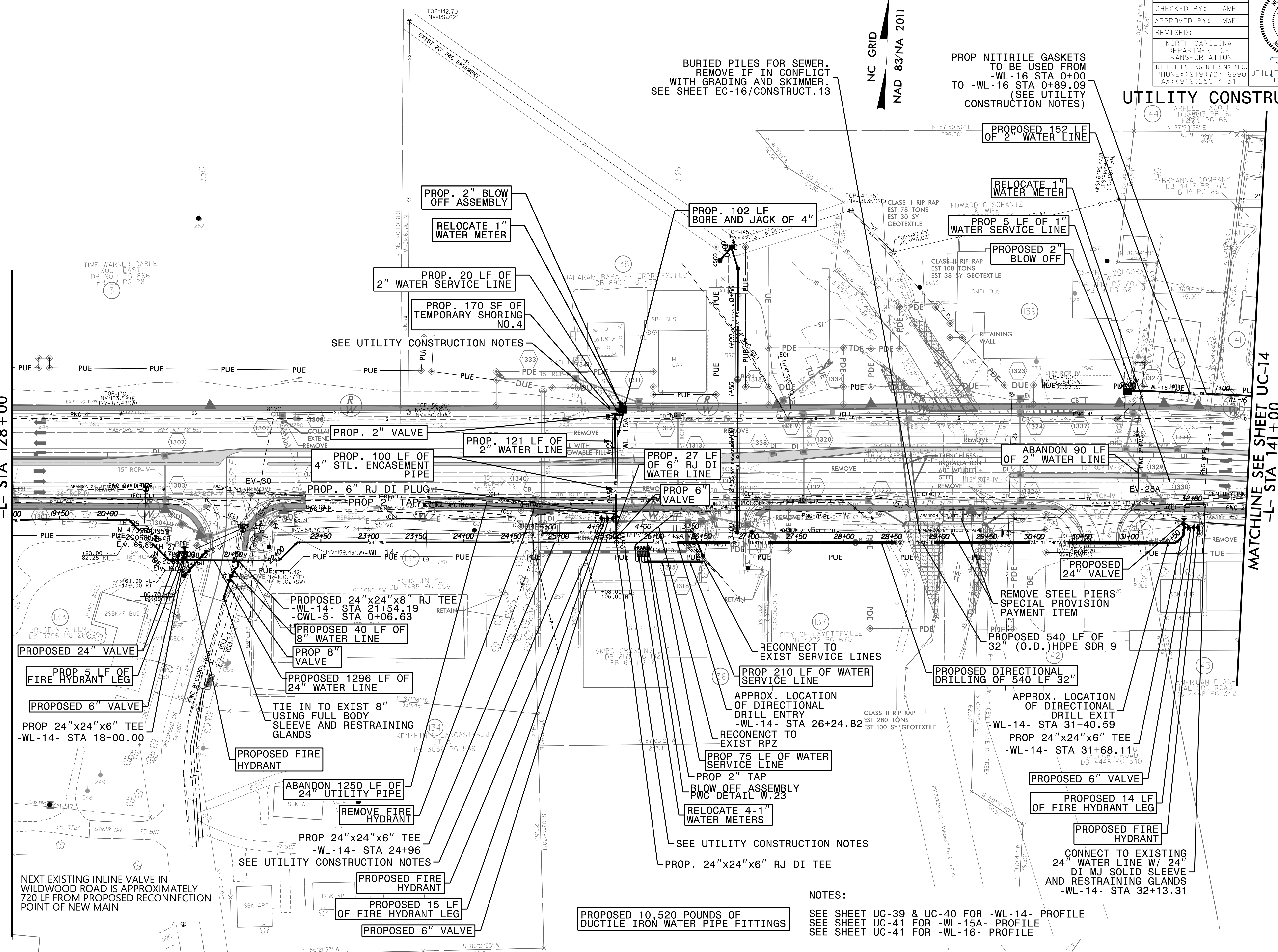
NC GRID
NAD 83/NA 2011

BURIED PILES FOR SEWER.
REMOVE IF IN CONFLICT
WITH GRADING AND SKIMMER.
SEE SHEET EC-16/CONSTRUCT.13

PROP NITRILE GASKETS
TO BE USED FROM
-WL-16 STA 0+00
TO -WL-16 STA 0+89.09
(SEE UTILITY
CONSTRUCTION NOTES)

MATCHLINE SEE SHEET UC-12
-L- STA 128+00

MATCHLINE SEE SHEET UC-14
-L- STA 141+00



REVISIONS

UTILITY REV. - JULY 24, 2018 - CANCELLED FROM BUREAU OF PUBLIC WORKS. REVISED DIRECTIONAL DRILL TO USE 32" HOPE SDR 9

27-JUL-2018 14:46 L:\Projects\Fayetteville Public Works Commission\2015017700RA -RoeFord_Road_NCDOT_U-4405\CADD\NCDOT_PLANS\Utilities\Engineering\UC\Proj\U4405_ut_rdlj3_uc13_psh.dgn

NOTES:
SEE SHEET UC-39 & UC-40 FOR -WL-14- PROFILE
SEE SHEET UC-41 FOR -WL-15A- PROFILE
SEE SHEET UC-41 FOR -WL-16- PROFILE

PROPOSED 10,520 POUNDS OF
DUCTILE IRON WATER PIPE FITTINGS

NEXT EXISTING INLINE VALVE IN
WILDWOOD ROAD IS APPROXIMATELY
720 LF FROM PROPOSED RECONNECTION
POINT OF NEW MAIN