
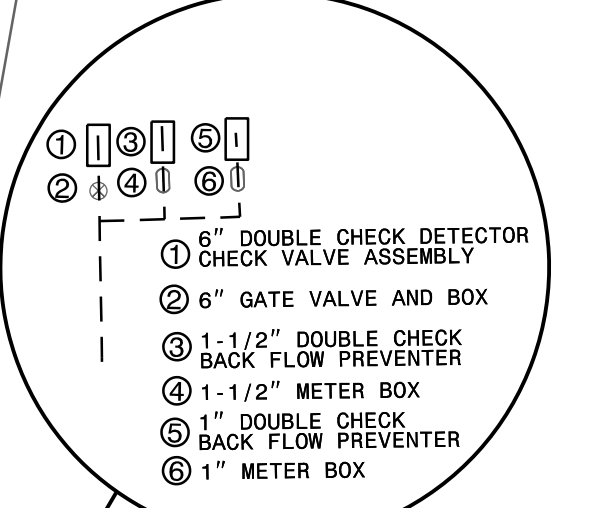


5/14/99
3-MAY-2018 14:43
L:\Projects\Public Works\Commission\2015\017700RA - Roeford Road NCDOT U 4405\CADD\NCDOT - PLANS\Utilities\Engineering\UC\Proj\U4405_uct12.uct12.psh.dgn

DOCUMENT NOT CONSIDERED FINAL
UNTIL ALL SIGNATURES ARE COMPLETED

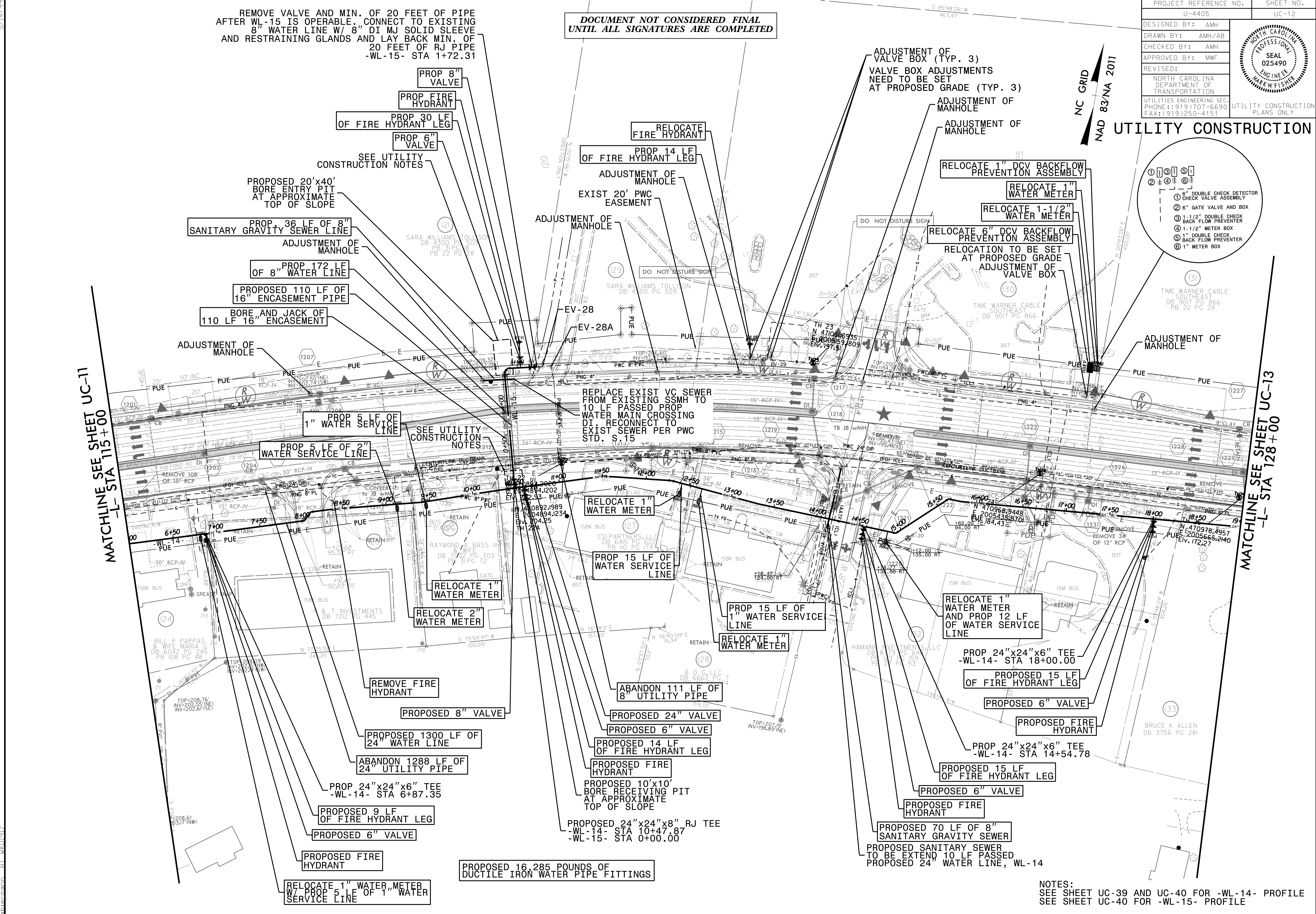
| | | | |
|--|--------|--|-------|
| PROJECT REFERENCE NO. | U-4405 | SHEET NO. | UC-12 |
| DESIGNED BY: | AMH |  | |
| DRAWN BY: | AMH/AB | | |
| CHECKED BY: | AMH | | |
| APPROVED BY: | MWF | | |
| REVISED: | | UTILITY CONSTRUCTION PLANS ONLY | |
| UTILITIES ENGINEERING SEC. PHONE: (919) 707-6690 FAX: (919) 250-4151 | | | |

UTILITY CONSTRUCTION



MATCHLINE SEE SHEET UC-11
-L- STA 115+00

MATCHLINE SEE SHEET UC-13
-L- STA 128+00



REMOVE VALVE AND MIN. OF 20 FEET OF PIPE AFTER WL-15 IS OPERABLE. CONNECT TO EXISTING 8" WATER LINE W/ 8" DI MJ SOLID SLEEVE AND RESTRAINING GLANDS AND LAY BACK MIN. OF 20 FEET OF RJ PIPE -WL-15- STA 1+72.31

ADJUSTMENT OF VALVE BOX (TYP. 3)
VALVE BOX ADJUSTMENTS NEED TO BE SET AT PROPOSED GRADE (TYP. 3)

ADJUSTMENT OF MANHOLE

RELOCATE 1" DCV BACKFLOW PREVENTION ASSEMBLY

RELOCATE 1" WATER METER

RELOCATE 1-1/2" WATER METER

RELOCATE 6" DCV BACKFLOW PREVENTION ASSEMBLY

RELOCATION TO BE SET AT PROPOSED GRADE ADJUSTMENT OF VALVE BOX

TIME WARNER CABLE SOUTHEAST DB 9017 PG 866 PB 22 PG 28

ADJUSTMENT OF MANHOLE

REPLACE EXIST VC SEWER FROM EXISTING SSMH TO 10 LF PASSED PROP WATER MAIN CROSSING DI. RECONNECT TO EXIST SEWER PER PWC STD. S.15

PROP 5 LF OF 1" WATER SERVICE LINE

PROP 5 LF OF 2" WATER SERVICE LINE

RELOCATE 1" WATER METER

PROP 15 LF OF WATER SERVICE LINE

PROP 15 LF OF 1" WATER SERVICE LINE

RELOCATE 1" WATER METER

RELOCATE 1" WATER METER AND PROP 12 LF OF WATER SERVICE LINE

PROP 24"x24"x6" TEE -WL-14- STA 18+00.00

PROPOSED 15 LF OF FIRE HYDRANT LEG

PROPOSED 6" VALVE

PROPOSED FIRE HYDRANT

PROP 24"x24"x6" TEE -WL-14- STA 14+54.78

PROPOSED 15 LF OF FIRE HYDRANT LEG

PROPOSED 6" VALVE

PROPOSED FIRE HYDRANT

PROPOSED 70 LF OF 8" SANITARY GRAVITY SEWER TO BE EXTEND 10 LF PASSED PROPOSED 24" WATER LINE, WL-14

PROPOSED 16,285 POUNDS OF DUCTILE IRON WATER PIPE FITTINGS

RELOCATE 1" WATER METER AND PROP 5 LF OF 1" WATER SERVICE LINE

NOTES:
SEE SHEET UC-39 AND UC-40 FOR -WL-14- PROFILE
SEE SHEET UC-40 FOR -WL-15- PROFILE