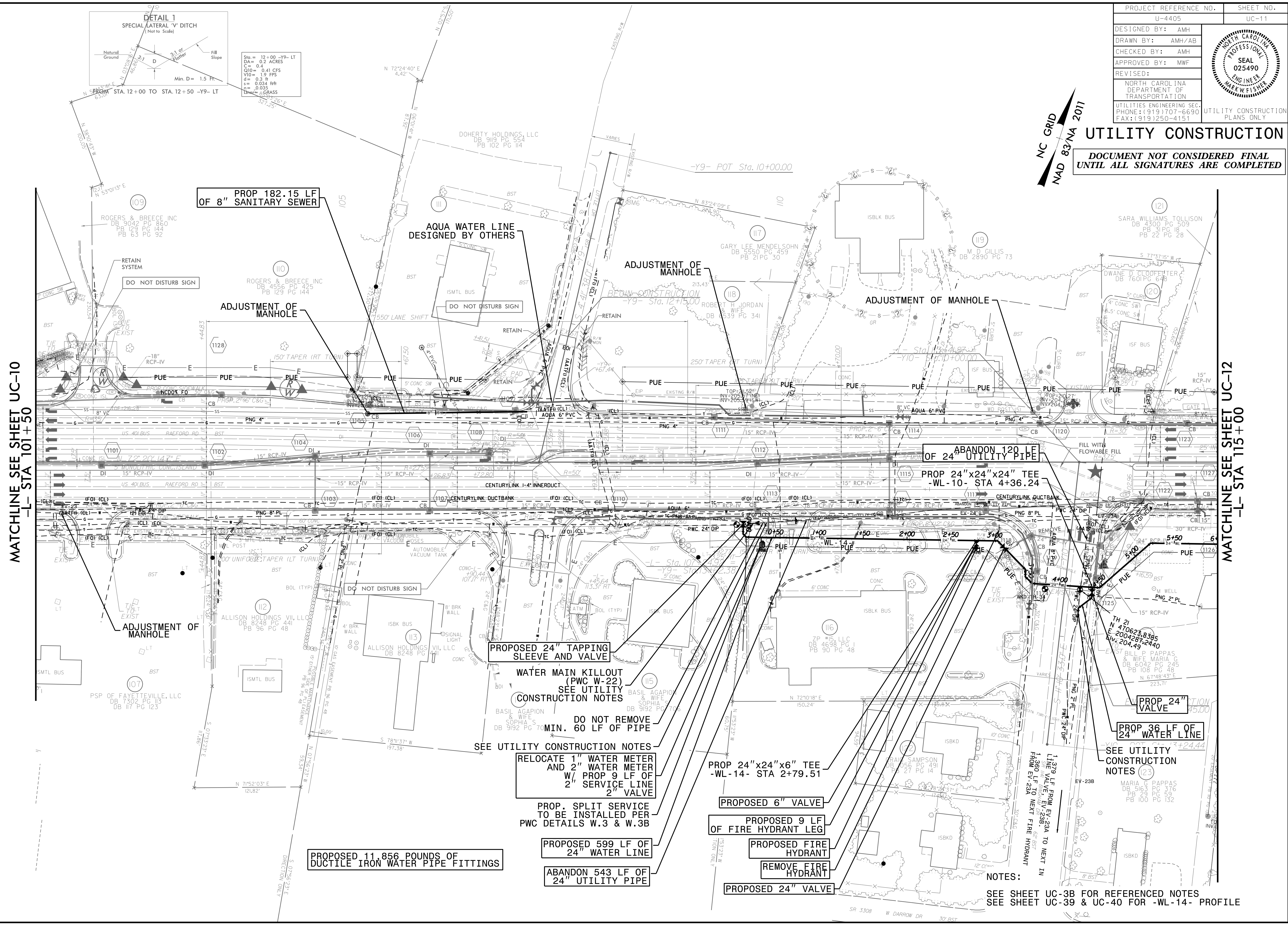
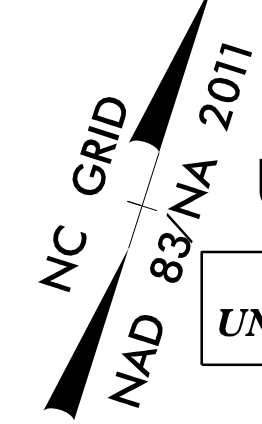


PROJECT REFERENCE NO.	SHEET NO.
U-4405	UC-11
DESIGNED BY: AMH	
DRAWN BY: AMH/AE	
CHECKED BY: AMH	
APPROVED BY: MWF	
REVISED:	
NORTH CAROLINA DEPARTMENT OF TRANSPORTATION UTILITIES ENGINEERING SEC. PHONE: (919) 707-6690 FAX: (919) 250-4151	
UTILITY CONSTRUCTION PLANS ONLY	

UTILITY CONSTRUCTION

DOCUMENT NOT CONSIDERED FINAL UNTIL ALL SIGNATURES ARE COMPLETED



MATCHLINE SEE SHEET UC-10
-L- STA 101+50

MATCHLINE SEE SHEET UC-12
-L- STA 115+00

PROP 182.15 LF OF 8" SANITARY SEWER

AQUA WATER LINE DESIGNED BY OTHERS

ABANDON 120' OF 24" UTILITY PIPE

PROP 24"x24"x24" TEE -WL-10- STA 4+36.24

PROPOSED 24" TAPPING SLEEVE AND VALVE

WATER MAIN KILLOUT (PWC W-22) SEE UTILITY CONSTRUCTION NOTES

DO NOT REMOVE 60 LF OF PIPE SEE UTILITY CONSTRUCTION NOTES

RELOCATE 1" WATER METER AND 2" WATER METER W/ PROP 9 LF OF 2" SERVICE LINE 2" VALVE

PROP. SPLIT SERVICE TO BE INSTALLED PER PWC DETAILS W.3 & W.3B

PROPOSED 599 LF OF 24" WATER LINE

ABANDON 543 LF OF 24" UTILITY PIPE

PROP 24"x24"x6" TEE -WL-14- STA 2+79.51

PROPOSED 6" VALVE

PROPOSED 9 LF OF FIRE HYDRANT LEG

PROPOSED FIRE HYDRANT

REMOVE FIRE HYDRANT

PROPOSED 24" VALVE

PROP 24" VALVE

PROP 36 LF OF 24" WATER LINE

SEE UTILITY CONSTRUCTION NOTES (23)

NOTES:
SEE SHEET UC-3B FOR REFERENCED NOTES
SEE SHEET UC-39 & UC-40 FOR -WL-14- PROFILE

3-MAY-2018 14:42
L:\Projects\Fayetteville Public Works Commission\2015\017700PRA Raeford Road NCDOT U 4405\CADD\NCDOT PLANS\Utilities\Engineering\UC\Proj\U4405_ut_rdlj1.uc11_psh.dgn
5/14/19