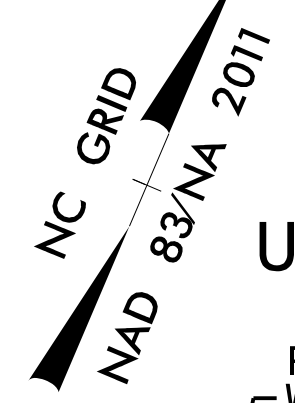


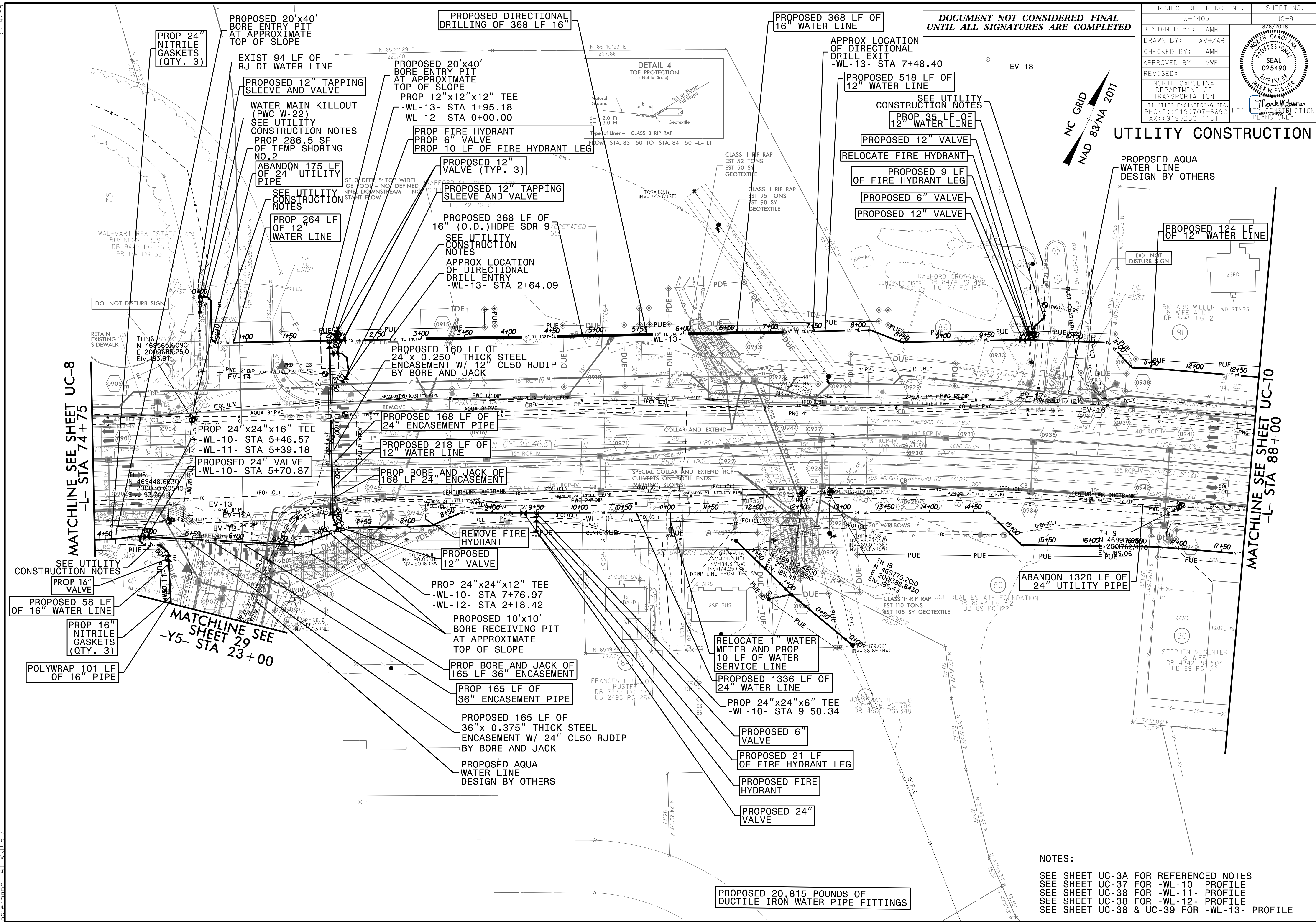
PROJECT REFERENCE NO.	UC-9
SHEET NO.	UC-9
DESIGNED BY:	AMH
DRAWN BY:	AMH/AB
CHECKED BY:	AMH
APPROVED BY:	MWF
REVISED:	
NORTH CAROLINA DEPARTMENT OF TRANSPORTATION	
UTILITIES ENGINEERING SEC. PHONE: (919) 707-6690 FAX: (919) 250-4151	



**DOCUMENT NOT CONSIDERED FINAL UNTIL ALL SIGNATURES ARE COMPLETED**



**UTILITY CONSTRUCTION**



07-AUC-2018 09:35 L:\Projects\Fayetteville Public Works Commission\2015\01700RA Raeford Road NCDOT U 4405\CADD\NCDOT PLANS\Utilities\Engineering\UC\Proj\4405\_ut\_rdy\_9\_uc09\_psh.dgn 5/14/2018

MATCHLINE SEE SHEET UC-8 -L- STA 74+75

MATCHLINE SEE SHEET UC-10 -L- STA 88+00

SEE UTILITY CONSTRUCTION NOTES  
 PROP 16" VALVE  
 PROPOSED 58 LF OF 16" WATER LINE  
 PROP 16" NITRILE GASKETS (QTY. 3)  
 POLYWRAP 101 LF OF 16" PIPE

MATCHLINE SEE SHEET 29 -Y5- STA 23+00

**NOTES:**  
 SEE SHEET UC-3A FOR REFERENCED NOTES  
 SEE SHEET UC-37 FOR -WL-10- PROFILE  
 SEE SHEET UC-38 FOR -WL-11- PROFILE  
 SEE SHEET UC-38 FOR -WL-12- PROFILE  
 SEE SHEET UC-38 & UC-39 FOR -WL-13- PROFILE

PROPOSED 20,815 POUNDS OF DUCTILE IRON WATER PIPE FITTINGS