

07-JUN-2018 13:48
L:\Projects\Public Works\Commission\2015\01700RA -Roeford Road NCDOT U-4405\CADD\NCDOT PLANS\Utilities\Engineering\UC\Proj\U4405_uc06.ucb6.psh.dgn
5/14/99

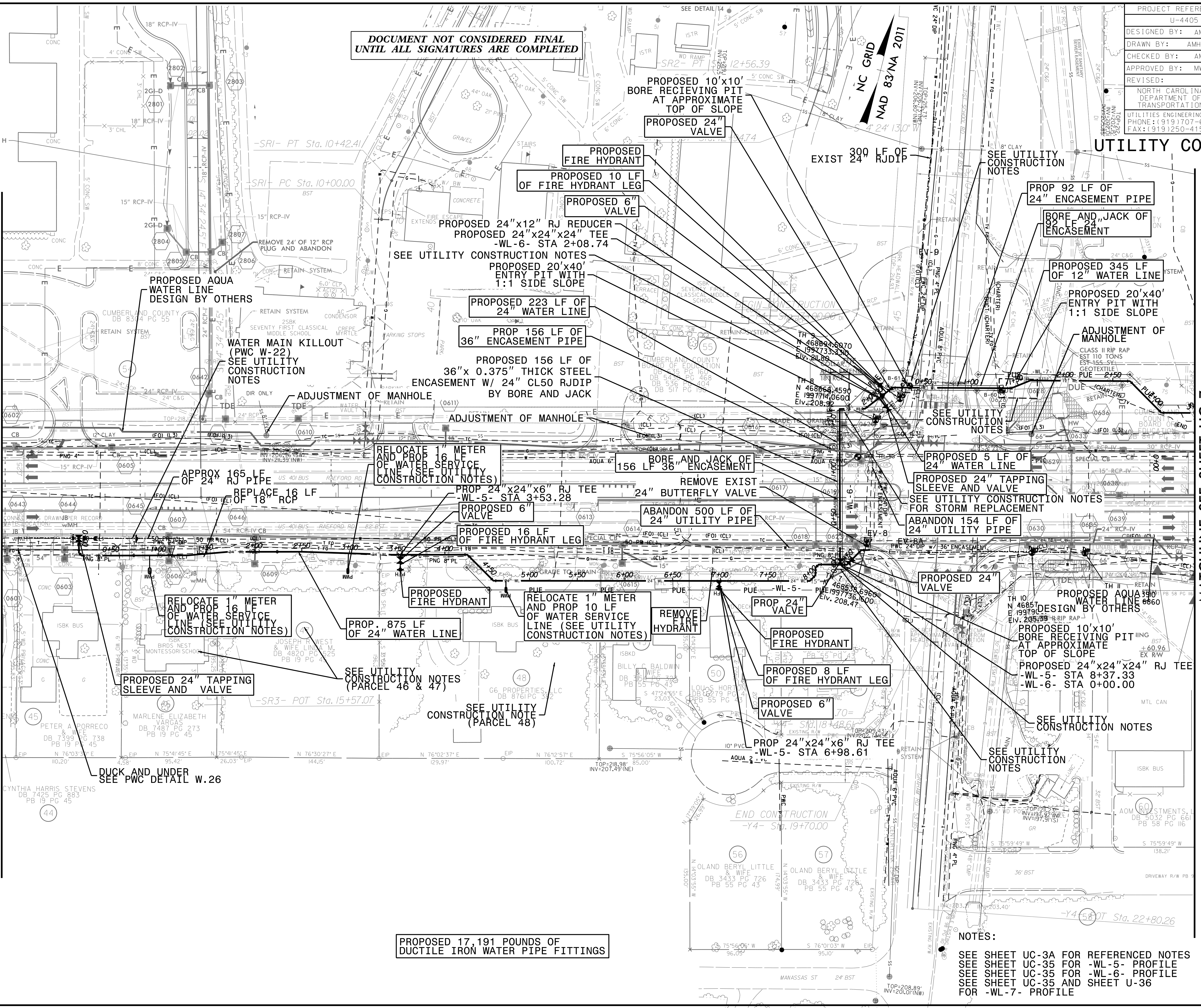
**DOCUMENT NOT CONSIDERED FINAL
UNTIL ALL SIGNATURES ARE COMPLETED**

PROJECT REFERENCE NO.	U-4405
SHEET NO.	UC-6
DESIGNED BY:	AMH
DRAWN BY:	AMH/AB
CHECKED BY:	AMH
APPROVED BY:	MWF
REVISED:	
NORTH CAROLINA DEPARTMENT OF TRANSPORTATION	
UTILITIES ENGINEERING SEC. PHONE: (919) 707-6690 FAX: (919) 250-4151	
UTILITY CONSTRUCTION PLANS ONLY	



MATCHLINE SEE SHEET UC-5
-L- STA 35+50

MATCHLINE SEE SHEET UC-7
-L- STA 48+00



PROPOSED 17,191 POUNDS OF
DUCTILE IRON WATER PIPE FITTINGS

NOTES:
SEE SHEET UC-3A FOR REFERENCED NOTES
SEE SHEET UC-35 FOR -WL-5- PROFILE
SEE SHEET UC-35 FOR -WL-6- PROFILE
SEE SHEET UC-35 AND SHEET U-36
FOR -WL-7- PROFILE