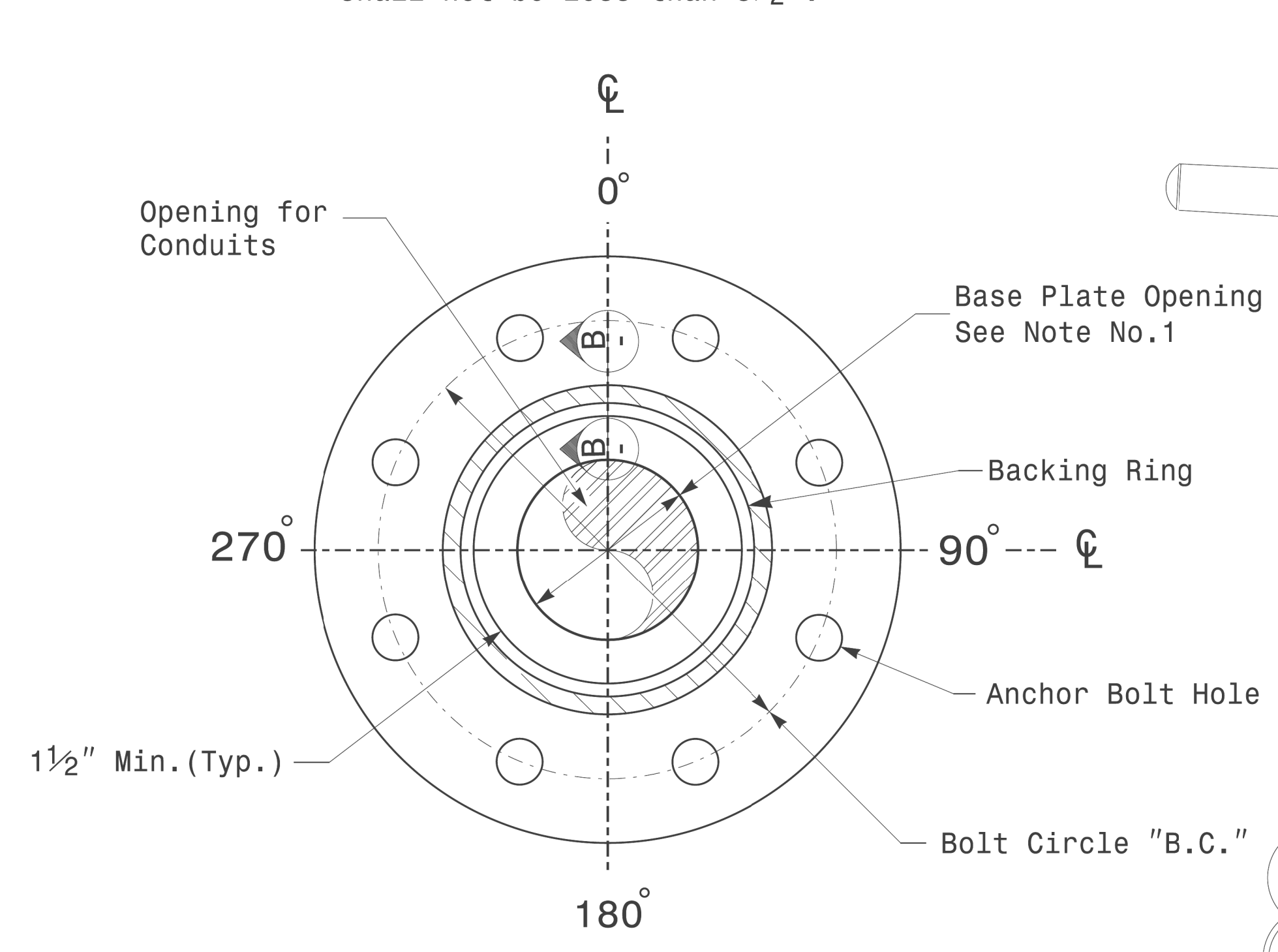
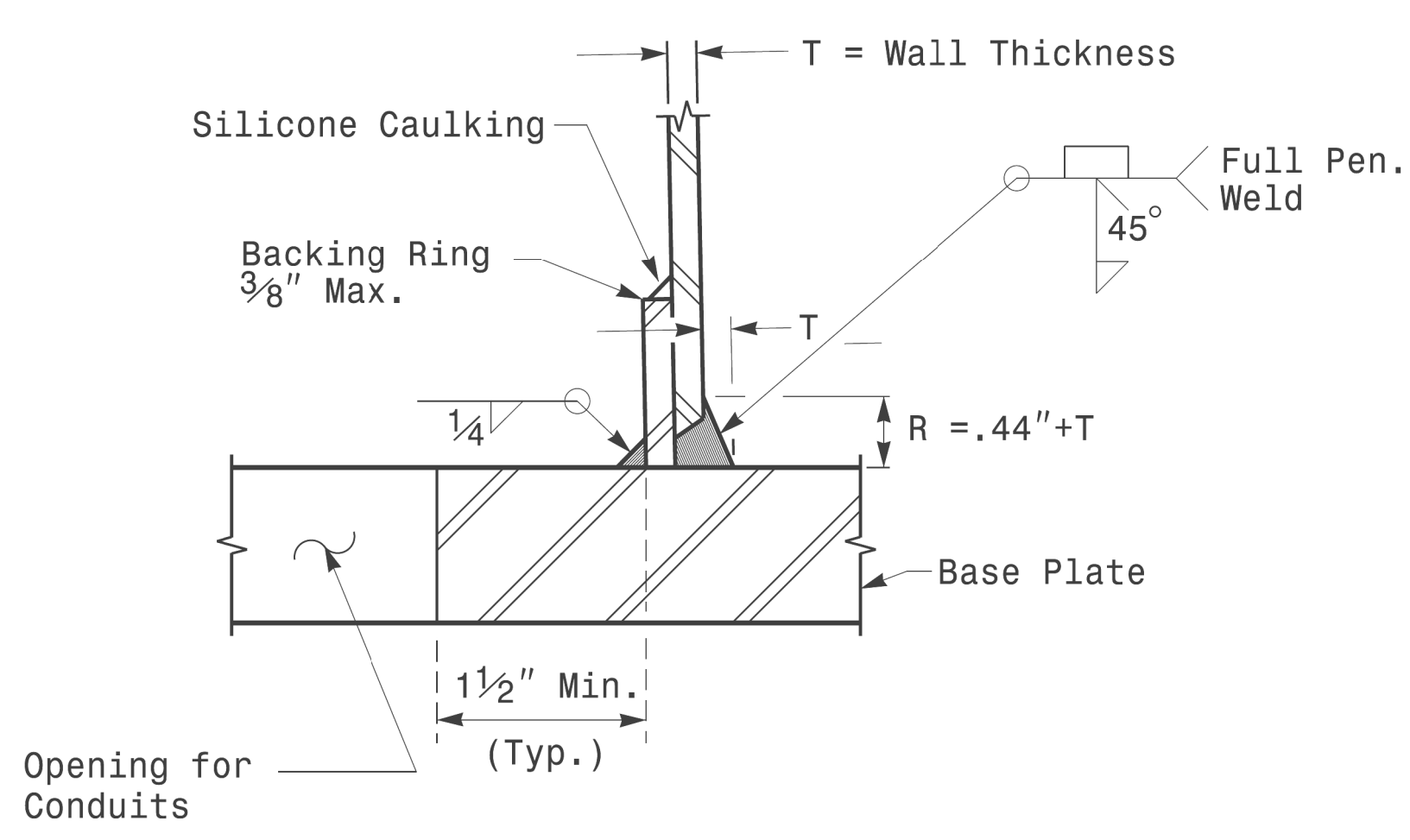


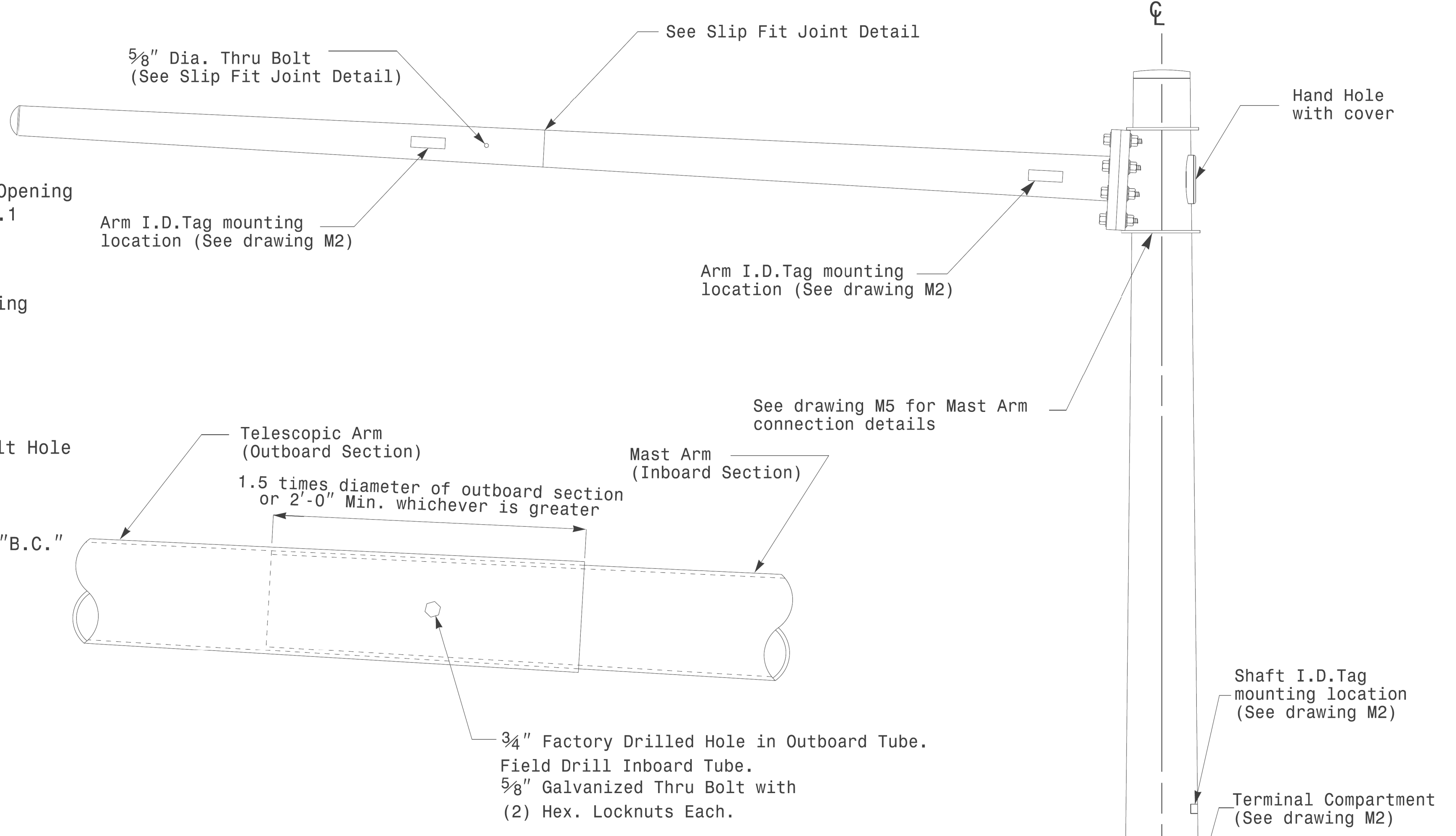
Note:
 1. Opening in pole base plate shall be equal to pole base inside diameter minus $3\frac{1}{2}$ " but shall not be less than $8\frac{1}{2}$ ".



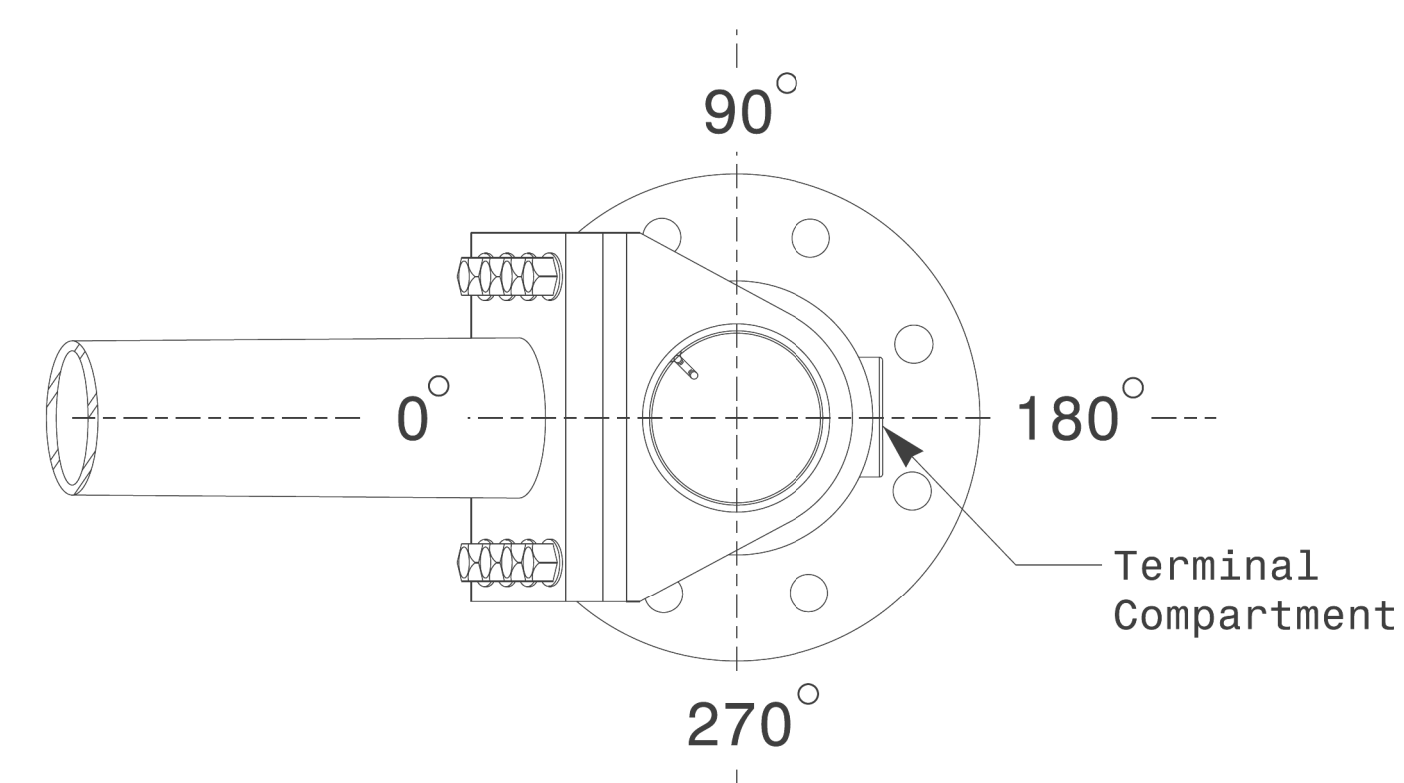
Section A-A
Pole Base Plate Details



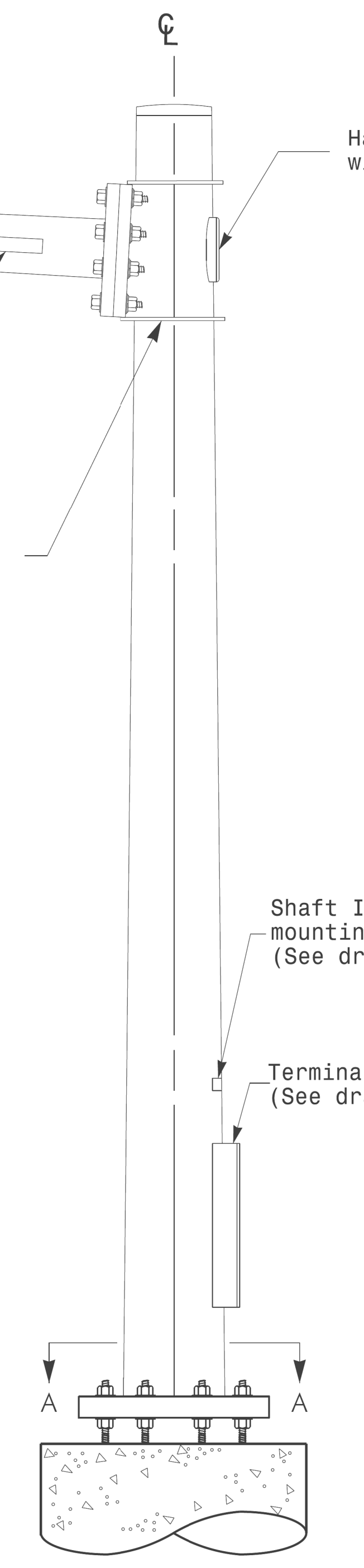
Section B-B
 (Pole Attachment to Base Plate)
Full-Penetration Groove Weld Detail



Slip Fit Joint Detail for Mast Arm



Mast Arm Radial Orientation



Mast Arm Pole

11-OCT-2017 08:33
 S:\13565\115 Signal\sig1 Design Section\FacTerm Region\Sheet\2016\2014 Sig.M4 Std. Fabrication Detail\Mast Arm Poles.dgn
 User:

Prepared in the Offices of: 750 N. Greenfield Pkwy, Garner, NC 27529	Typical Fabrication Details For Mast Arm Poles		SEAL Dinesh C. Sarkar ENGINEER
	PLAN DATE: OCTOBER 2017 PREPARED BY: N. BITTING	DESIGNED BY: K.C. DURIGON REVIEWED BY: D.C. SARKAR	
SCALE: 0 NA NONE	REVISIONS:	INIT.:	DATE:
DocuSigned by: Dinesh C. Sarkar 442637894			10/11/2017 DATE

Fabrication Details – Mast Arm Poles