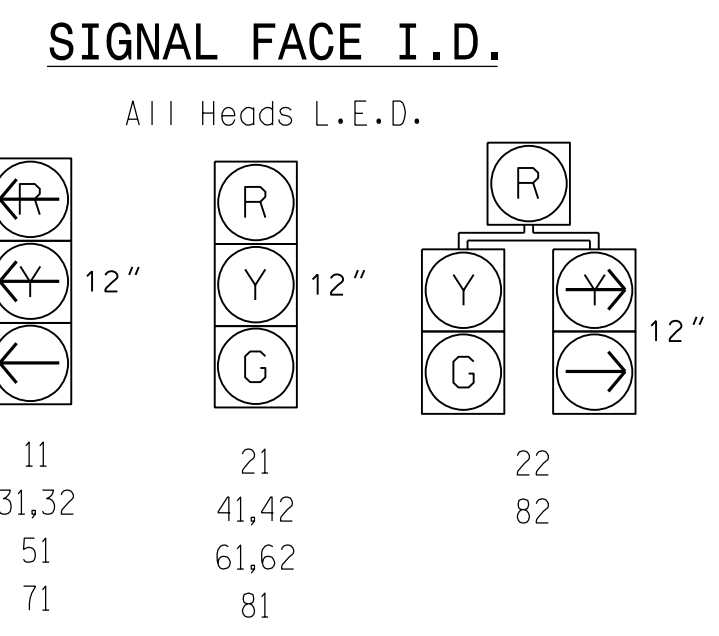


SIGNAL FACE	PHASE								FLASH
	01+5	01+6	02+5	02+6	03+7	03+8	04+7	04+8	
11	←	←	←	←	←	←	←	←	←
21	R	R	G	G	R	R	R	R	Y
22	R	R	G	G	R	R	R	R	Y
31,32	←	←	←	←	←	←	←	←	←
41,42	R	R	R	R	R	R	G	G	R
51	←	←	←	←	←	←	←	←	←
61,62	R	G	R	G	R	R	R	R	Y
71	←	←	←	←	←	←	←	←	←
81	R	R	R	R	R	G	R	G	R
82	R	R	R	R	R	G	R	G	R

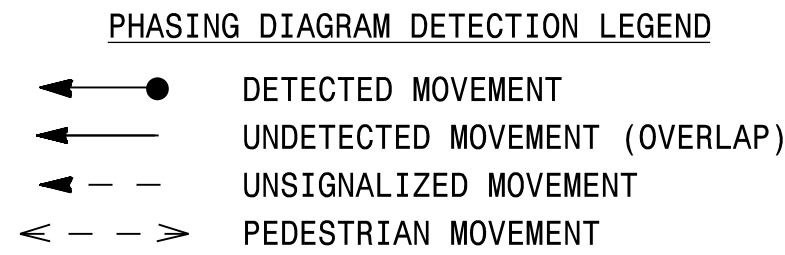


ASC/3 DETECTOR INSTALLATION CHART											
DETECTOR					PROGRAMMING						
LOOP	SIZE (FT)	DISTANCE FROM STOPBAR (FT)	TURNS	NEW LOOP	PHASE	CALLING	EXTEND TIME	DELAY TIME	USE ADDED INITIAL	TYPE	SYSTEM LOOP
1A	6X40	0	*	-	1	Yes	-	-	-	S	-
1B	6X40	0	*	-	1	Yes	-	15	-	S	-
2A	6X6	300	*	-	2	Yes	-	-	-	N	-
2B	6X6	300	*	-	2	Yes	-	-	-	N	-
2C	6X40	0	*	-	2	Yes	2.0	5	-	G	-
2D	6X40	0	*	-	2	Yes	2.0	5	-	G	-
3A	6X40	0	*	-	3	Yes	-	3	-	S	-
3B	6X40	0	*	-	3	Yes	-	-	-	S	-
4A	6X40	0	*	-	4	Yes	-	10	-	S	-
5A	6X40	0	*	-	5	Yes	-	-	-	S	-
6A	6X6	300	*	-	6	Yes	-	-	-	N	-
6B	6X6	300	*	-	6	Yes	-	-	-	N	-
6C	6X40	0	*	-	6	Yes	2.0	5	-	G	-
6D	6X40	0	*	-	6	Yes	2.0	5	-	G	-
7A	6X40	0	*	-	7	Yes	-	3	-	S	-
8A	6X40	0	*	-	8	Yes	-	-	-	S	-

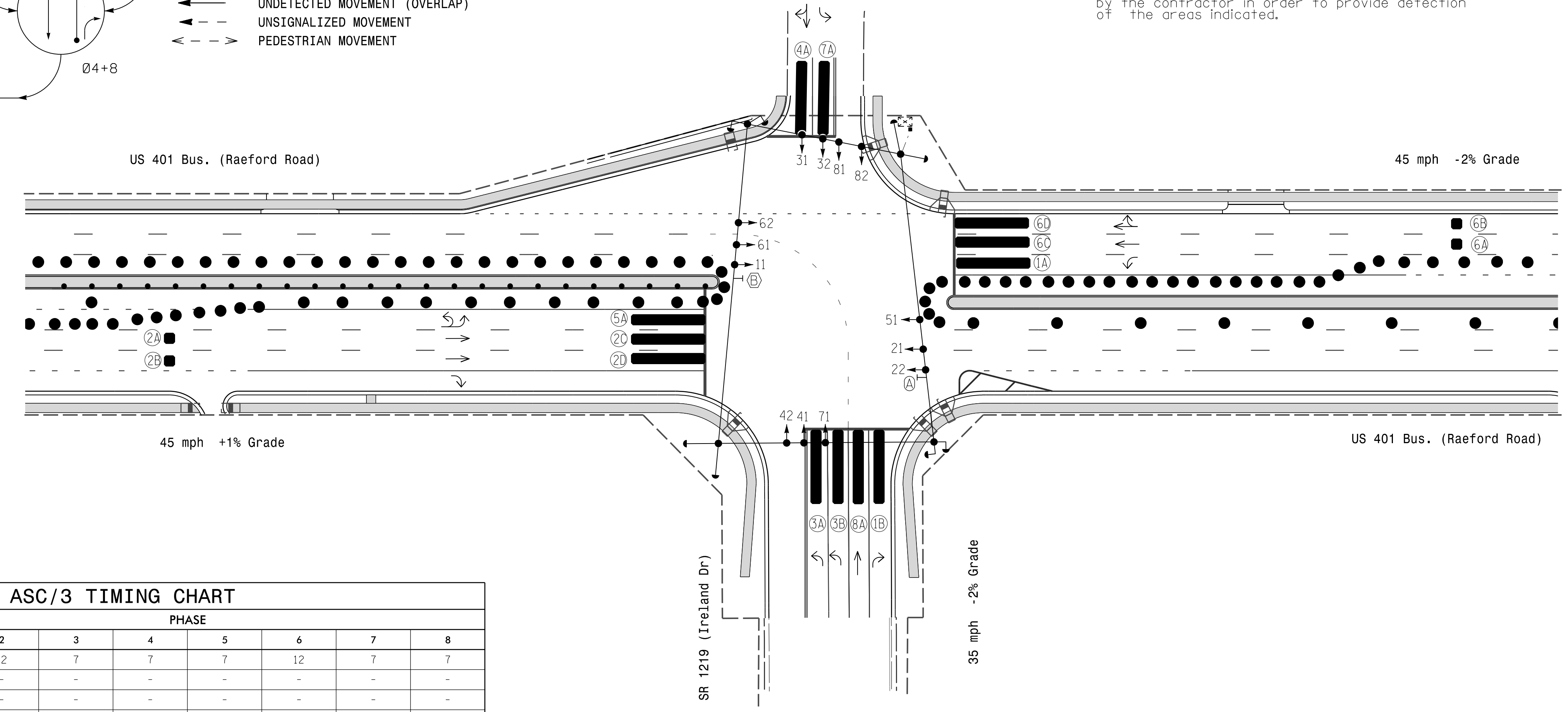
8 Phase Fully Actuated Fayetteville Signal System

NOTES

- Refer to "Roadway Standard Drawings NCDOT" dated January 2018 and "Standard Specifications for Roads and Structures" dated January 2018.
- Do not program signal for late night flashing operation unless otherwise directed by the Engineer.
- Phase 1 and Phase 5 may be lagged.
- Phase 3 and Phase 7 may be lagged.
- Reposition existing signal heads numbered 11,21,22,51,61,62.
- Set all detector units to presence mode.
- Maximum times shown in timing chart are for free-run operation only. Coordinated signal system timing values supersede these values.

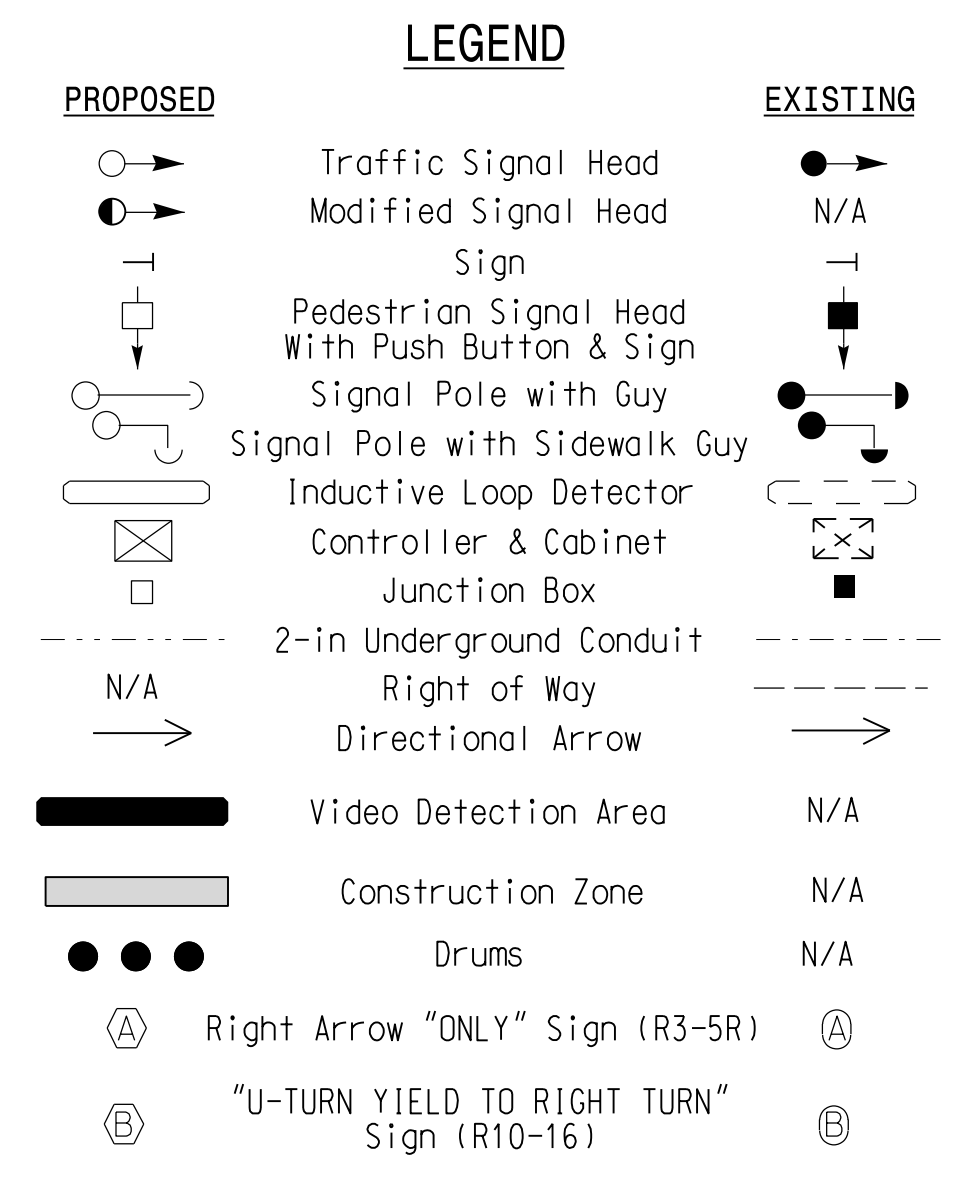


Entrance to Shopping Center Speed Unposted (Design) 35 mph +2% Grade



ASC/3 TIMING CHART								
FEATURE	PHASE							
	1	2	3	4	5	6	7	8
Min Green *	7	12	7	7	7	12	7	7
Walk *	-	-	-	-	-	-	-	-
Ped Clear	-	-	-	-	-	-	-	-
Veh. Extension *	2.0	6.0	2.0	2.0	2.0	6.0	2.0	2.0
Max I *	15	60	15	15	15	60	15	15
Yellow	3.0	4.4	3.0	3.7	3.0	4.7	3.0	4.0
Red Clear	3.4	1.6	3.4	2.8	3.2	1.4	3.5	2.4
Red Revert	-	-	-	-	-	-	-	-
Actuations B4 Add *	-	-	-	-	-	-	-	-
Seconds / Actuation *	-	-	-	-	-	-	-	-
Max Initial *	-	-	-	-	-	-	-	-
Time Before Reduction *	-	15	-	-	-	15	-	-
Time To Reduce *	-	30	-	-	-	30	-	-
Minimum Gap	-	3.0	-	-	-	3.0	-	-
Locking Detector	-	-	-	-	-	-	-	-
Recall Position	-	VEH. RECALL	-	-	-	VEH. RECALL	-	-
Dual Entry	-	-	-	-	-	-	-	-
Simultaneous Gap	X	X	X	X	X	X	X	X

* These values may be field adjusted. Do not adjust Min Green and Extension times for phases 2 and 6 lower than what is shown. Min Green for all other phases should not be lower than 4 seconds.



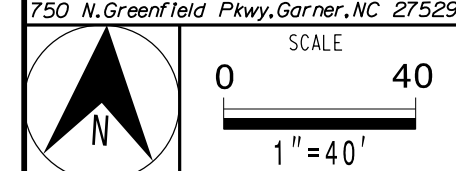
Signal Upgrade Temporary Design 3 - TMP Phase-III

US 401 Bus. (Raeford Road) at SR 1219 (Ireland Drive) / Shopping Center Drive

Division 6 Cumberland County Fayetteville

PLAN DATE: March 2018 REVIEWED BY: E D Harris

PREPARED BY: J Hambright REVIEWED BY: B L Watson



REVISIONS	INIT.	DATE

DOCUMENT NOT CONSIDERED FINAL UNLESS ALL SIGNATURES COMPLETED