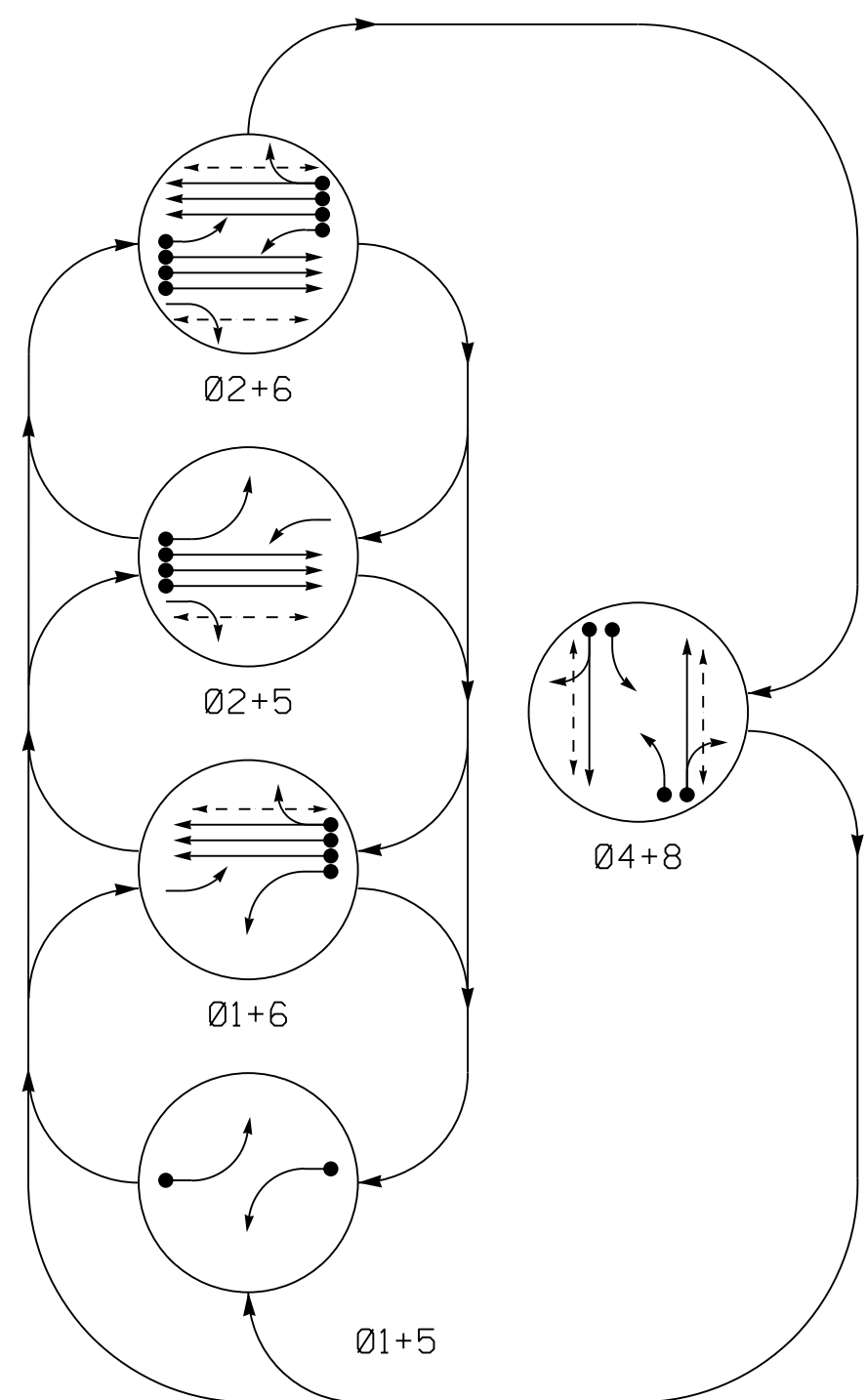
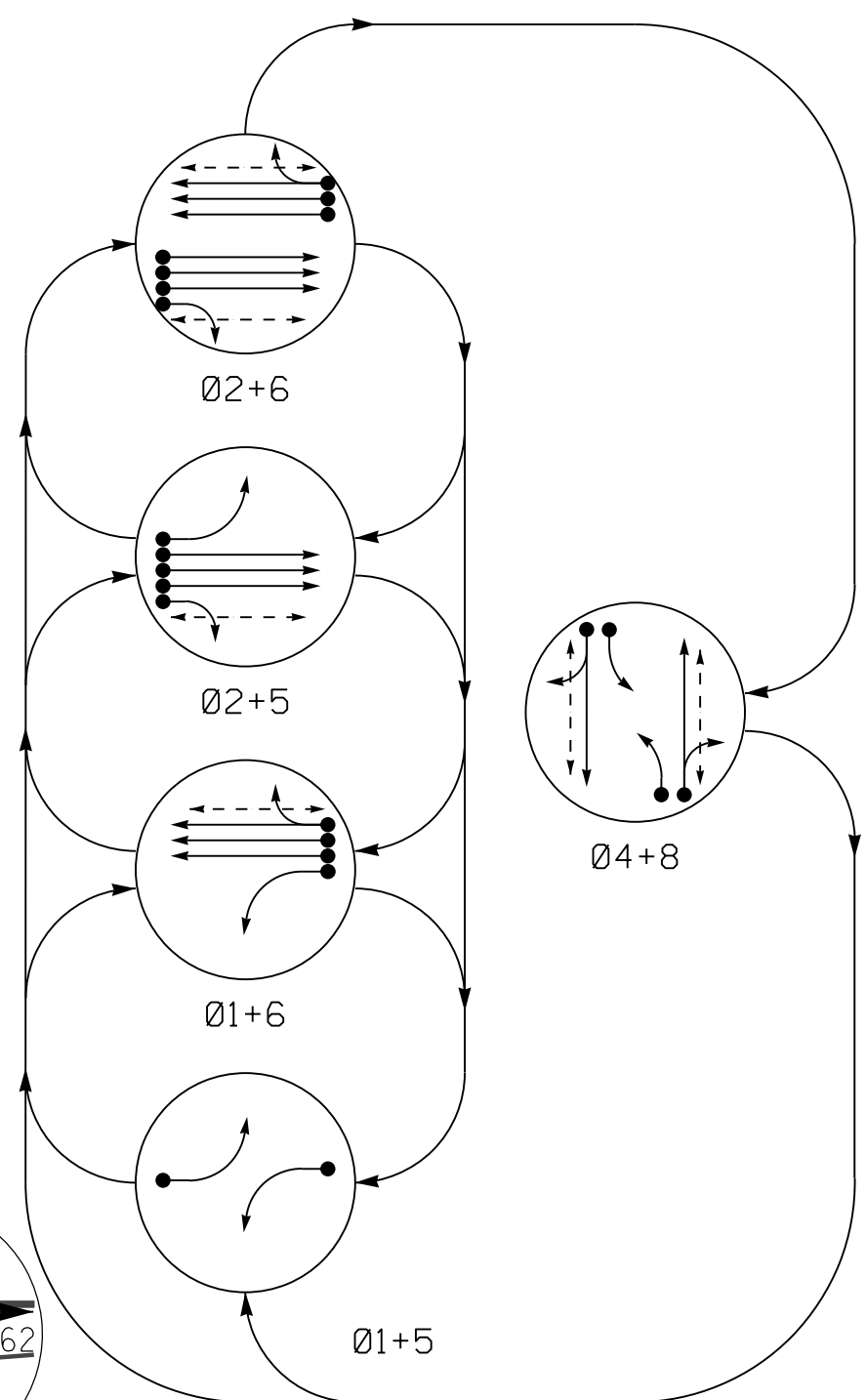


DEFAULT PHASING DIAGRAM



DEFAULT TABLE OF OPERATION table with columns for SIGNAL FACE, PHASE, and FLASH.

ALTERNATE PHASING DIAGRAM



ALTERNATE TABLE OF OPERATION table with columns for SIGNAL FACE, PHASE, and FLASH.

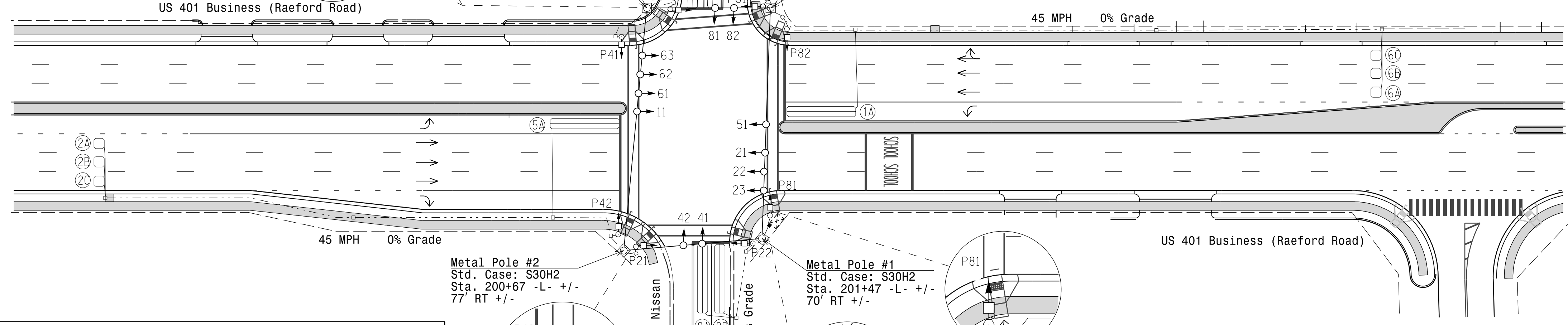
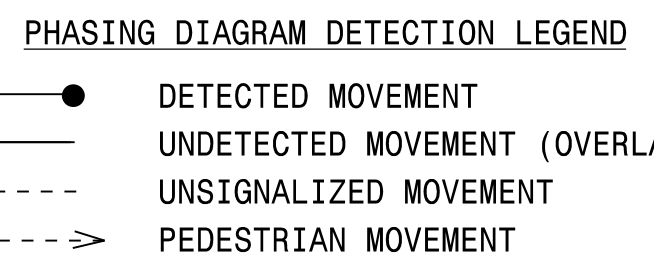
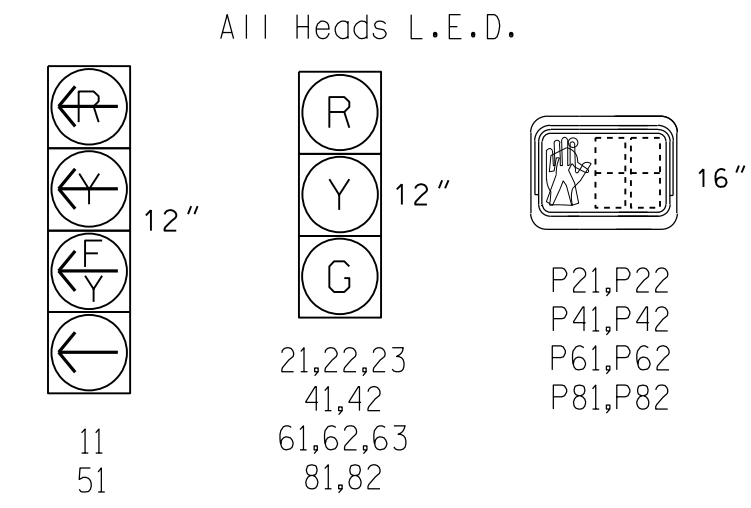
ASC/3 DETECTOR INSTALLATION CHART table with columns for LOOP, SIZE, DISTANCE, TURNS, NEW LOOP, PHASE, CALLING, EXTEND TIME, DELAY TIME, USE ADDED INITIAL, TYPE, SYSTEM LOOP, NEW CARD.

5 Phase Fully Actuated Fayetteville Signal System

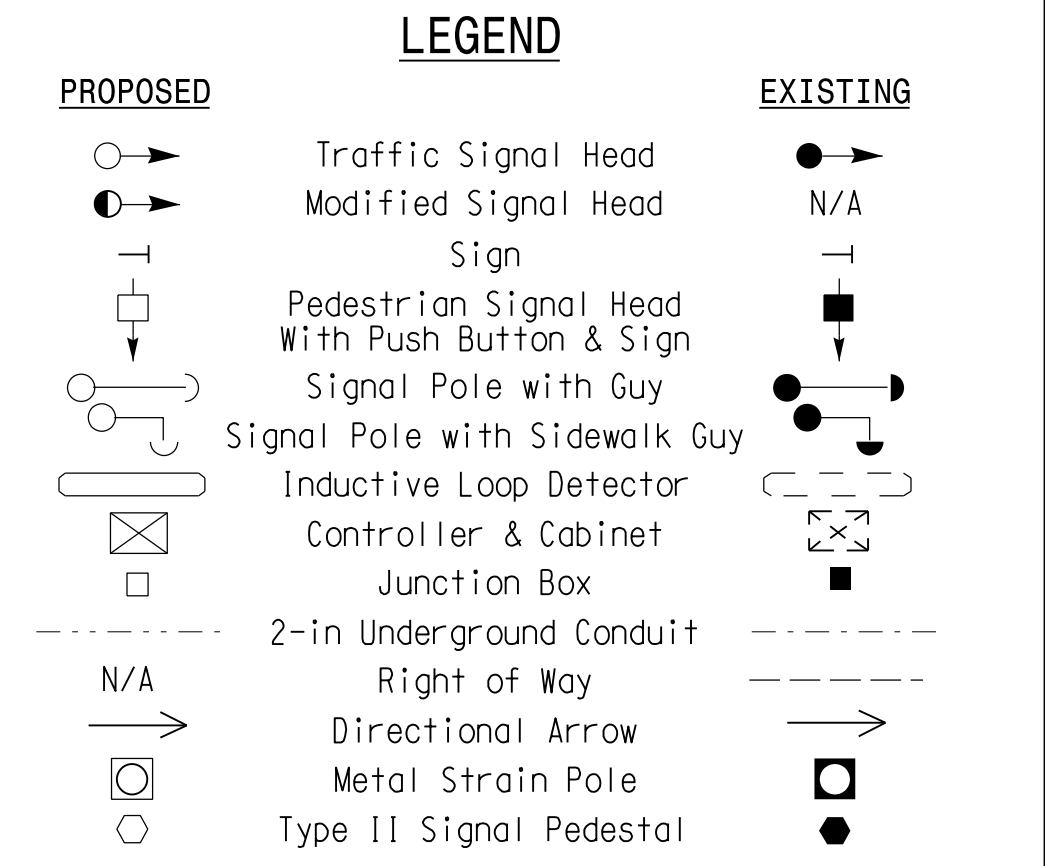
NOTES

- List of 9 notes regarding signal specifications, phasing, and pedestrian details.

SIGNAL FACE I.D.



ASC/3 TIMING CHART table with columns for FEATURE and PHASE (1, 2, 4, 5, 6, 8).



Signal Upgrade - Final Design

Stantec logo and contact information for Stantec Consulting Services Inc.

Professional Engineer seal for Remy L. Watson, State of North Carolina.

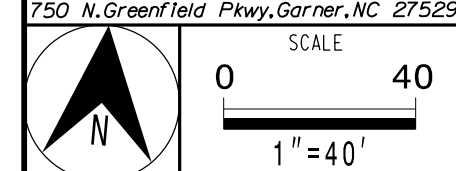
Project information for US 401 Business (Raeford Road) at Brighton Road/Fred Anderson Nissan, including dates and personnel.

Professional Engineer seal for Remy L. Watson, State of North Carolina.

3/29/2018 11:47:17 AM C:\Users\pmonroe\Documents\Signal Design\4405\4405-0328 Final.dgn User: rmonroe

* These values may be field adjusted. Do not adjust Min Green and Extension times for phases 2 and 6 lower than what is shown. Min Green for all other phases should not be lower than 4 seconds.

DOCUMENT NOT CONSIDERED FINAL UNLESS ALL SIGNATURES COMPLETED



3/29/2018 DATE 06-0328